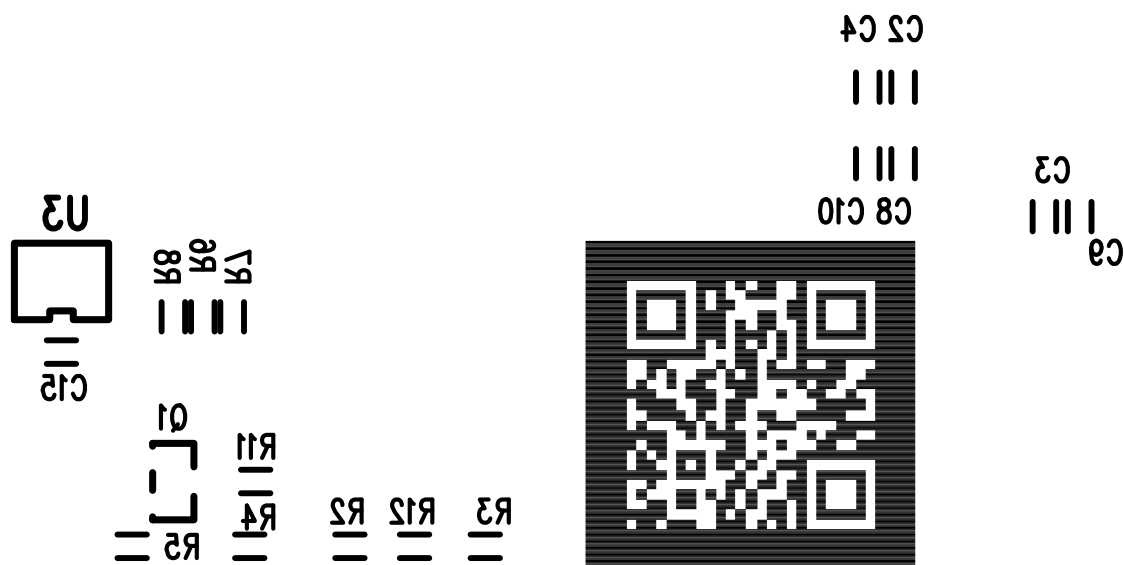


FOR CUSTOMER USE ONLY
-LTC CONFIDENTIAL-



REV 3

BOTTOM SILKSCREEN

DATE: 01-09-14

LINEAR TECHNOLOGY

DC2025A-3 LTC2668CUJ-16/12

16-CHANNEL, 16/12-BIT SPI +/-10V VOUT DAC WITH 10ppm REFERENCE