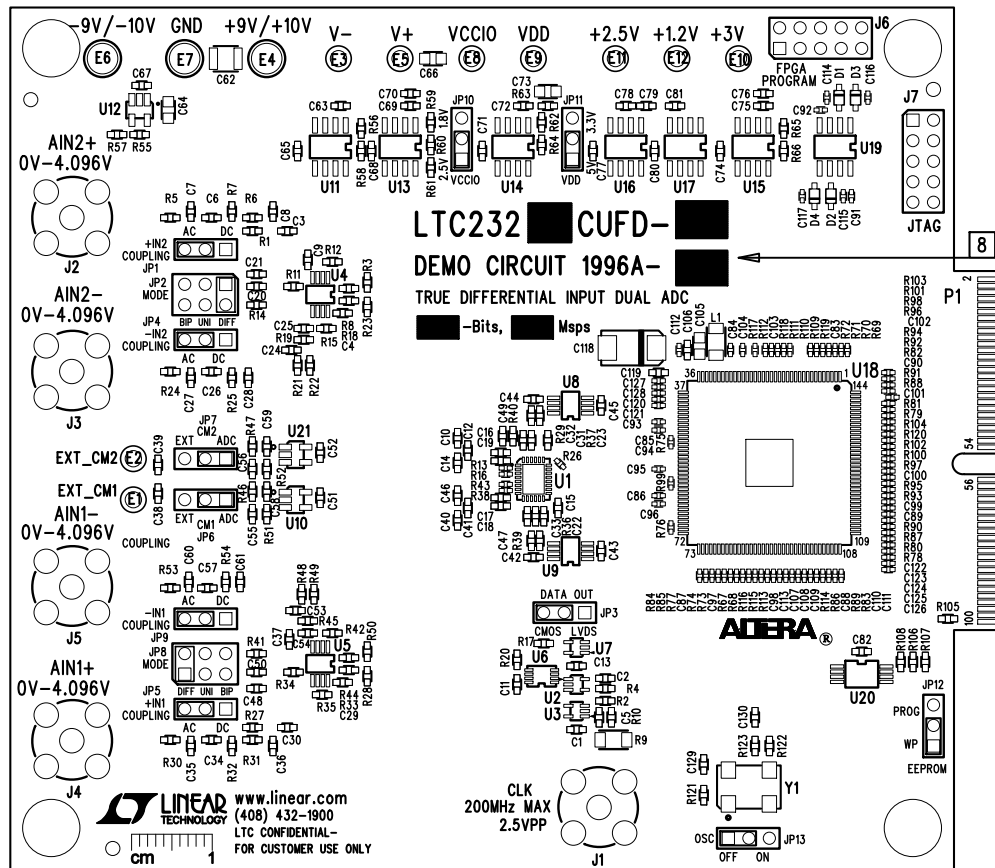
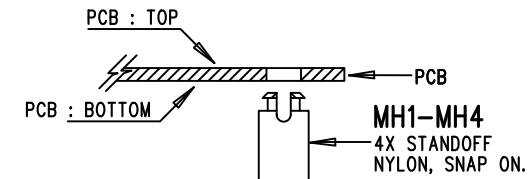


REVISION HISTORY				
ECO	REV	DESCRIPTION	APP. ENG.	DATE
-	2	PRODUCTION	DOUG S.	03-31-14




## NOTES: UNLESS OTHERWISE SPECIFIED

1. WORKMANSHIP SHALL BE IN ACCORDANCE WITH IPC-A-610.
2. ASSEMBLY PROCESS SHALL INCLUDE: REFLOW SOLDER TOP SIDE SMD. MAXIMUM SOLDER TEMPERATURE IS 240 DEGREES CELSIUS.
3. PARTS TO OMIT WILL BE SPECIFIED ON THE BILL OF MATERIALS. LOCATIONS OF OMITTED PARTS SHALL BE FREE OF SOLDER. MASK THE SOLDER STENCIL WHERE SMT PARTS ARE OMITTED.
4. INSTALL SHUNTS AS SHOWN.
5. DEPANELIZE BOARDS AFTER ASSEMBLY AND ROUTE-OUT THE BREAKOUT TABS ON FOUR SIDES OF THE BOARD EDGE.
6. DO NOT APPLY ANY KIND OF ASSEMBLY STAMP OR QA STAMP TO ANY BOARD.
7. INSTALL 4 STANDOFFS AND SMA CONNECTORS AS SHOWN BELOW:



8. MARK EACH ASSEMBLY TYPE, LTC PART NUMBER, NUMBER OF -BIT, AND Msps RATE IN THE WHITE BLOCK AREAS WITH BLACK PERMANENT MARKER AS SHOWN IN TABLE BELOW:

ASSY	U1	-BIT	Msps
A	LTC2323CUCFD-16	16	5
B	LTC2321CUCFD-16	16	2
C	LTC2323CUCFD-14	14	5
D	LTC2321CUCFD-14	14	2
E	LTC2323CUCFD-12	12	5
F	LTC2321CUCFD-12	12	2

APPROVALS		 1630 MCCARTHY BLVD MILPITAS, CA 95035 PH: (408)432-1900 www.linear.com LTC CONFIDENTIAL- FOR CUSTOMER USE ONLY		
PCB DES.	KIM T.			
APP ENG.	DOUG S.	TITLE: TOP ASSEMBLY DRAWING		
		TRUE DIFFERENTIAL INPUT DUAL ADC		
		SIZE N/A	IC NO. LTC232XCUCFD FAMILY DEMO CIRCUIT 1996A	REV. 2
SCALE = NONE		FILENAME:	DC1996A-2.PCB	SHT 1 OF 1