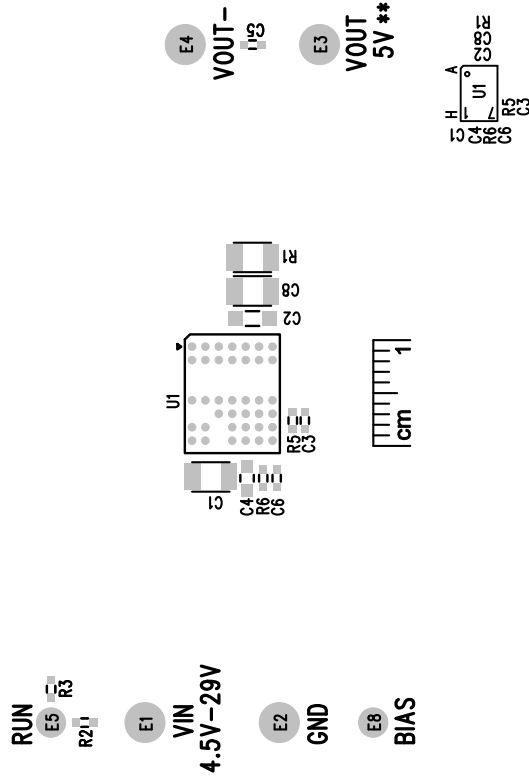


2kV AC ISOLATED μ MODULE[®] DC/DC CONVERTER
DEMO CIRCUIT 1987A

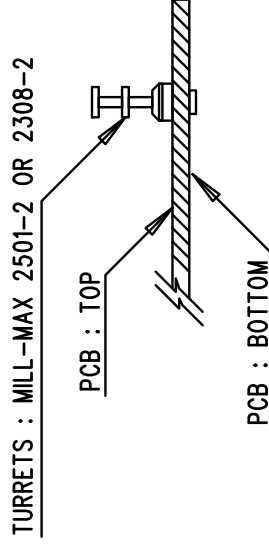


****SEE QUICK START GUIDE FOR OUTPUT CURRENT RANGE.**



The LTM8057 Is
UL60950 Recognized
File E464570 c91us

1. WORKMANSHIP SHALL BE IN ACCORDANCE WITH IPC-A-610.
2. ASSEMBLY PROCESS SHALL INCLUDE: REFLOW SOLDER TOP SIDE SMD. MAXIMUM SOLDER TEMPERATURE IS 240 DEGREES CELSIUS.
3. PARTS TO OMIT WILL BE SPECIFIED ON THE BILL OF MATERIALS. LOCATIONS OF OMITTED PARTS SHALL BE FREE OF SOLDER. MASK THE SOLDER STENCIL WHERE SMT PARTS ARE OMITTED.
4. INSTALL SHUNTS AS SHOWN ON ASSY DRAWING.
5. DEPANELIZE BOARDS AFTER ASSEMBLY AND ROUTE-OUT THE BREAKOUT TABS ON FOUR SIDES OF THE BOARD EDGE.
6. DO NOT APPLY ANY KIND OF ASSEMBLY STAMP OR QA STAMP TO ANY BOARD.



1630 MCCARTHY BLVD
MILPITAS, CA 95035
PH: (408)432-1900
www.linear.com
LTC CONFIDENTIAL—
FOR CUSTOMER USE ONLY

TITLE: TOP ASSEMBLY DRAWING

2KV AC ISOLATED μ MODULE[®] DC/DC CONVERTER

SIZE N/A	IC NO. LTM8057EY DEMO CIRCUIT 1987A	REV. 2
FILENAME: DC1987A-2.PCB		SHT 1 OF 2