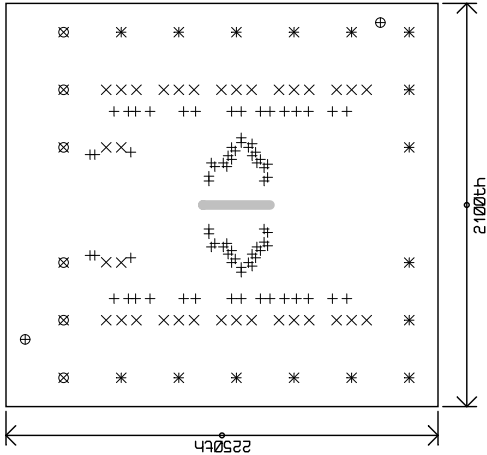
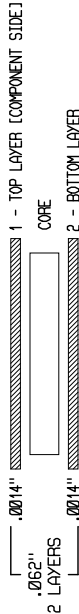


SIZE	QTY	SYM	PLATED	TOL
0.010"	80	+	YES	+/-0.003"
0.030"	34	x	YES	+/-0.003"
0.066"	16	*	YES	+/-0.003"
0.070"	2	⊕	NO	+/-0.003"
0.096"	6	⊗	YES	+/-0.003"

SHOWN FROM COMPONENT SIDE



LAYER STRUCTURE

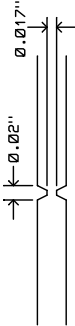


1 - TOP LAYER [COMPONENT SIDE]
COPE
2 - BOTTOM LAYER

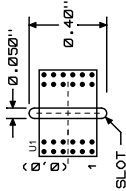
REVISION HISTORY			
ECO	REV	DESCRIPTION	DATE
-	1	1ST PROTOTYPE	4-17-12

NOTES: UNLESS OTHERWISE SPECIFIED

- FAB PER IPC-A-600
- MATERIAL: -LEAD FREE ASSEMBLY COMPLIANT, ISOLA FR-370HR OR EQUIVALENT
-FINISHED THICKNESS TO BE 0.062" +/- .005"
-TOTAL OF 2 LAYERS WITH 1 OZ. CU ON EACH LAYER
-FLAMMABILITY RATING: 94V-0 MINIMUM
- SIZE: CUT TO DIMENSIONS AND TOLERANCES SHOWN
- DRILLING: -DRILL HOLES PER SCHEDULE. PLATE THROUGH HOLES WITH COPPER, 0.001" THICK MIN.
-ALL HOLE SIZES ARE SPECIFIED AFTER PLATING
-HOLE LOCATION TOLERANCES ARE +/- 0.003" IN RELATION TO CENTER
-GOLD IMMERION BOTH SIDES
-FOR SILKSCREENS: USE WHITE NON-CONDUCTIVE INK
DO NOT ALTER ARTWORK e.g. TO ADD LOGO OR DATE CODE.
- PCBs ARE TO BE ROHS COMPLIANT
- DESIGN HAS SOLDER MASK DEFINED PADS ON U1.
U1 SOLDER MASK SIZE IS 20 MIL AND PAD SIZE IS 24 MIL.
DO NOT CHANGE ANY SIZE ON THIS COMPONENT.
- SCORING FOR PANELIZED PCB:



10. SLOT DIMENSION:



UNLESS OTHERWISE SPECIFIED		APPROVALS	
DIMENSIONS ARE IN INCHES		PCB DES.	KEITH B.
TOLERANCES:		APP ENG.	KEITH B.
0.XX" = +/- 0.01"			
0.XXX" = +/- 0.005"			
INTERPRET DIM AND TOL PER ASME Y14.5M-1994			
THIRD ANGLE PROJECTION			
SCALE = 1:1			
DATE: Tuesday April 17, 2012			
SHEET 1 OF 1			

1630 McCarthy Blvd.
Milpitas, CA 95035
Phone: (408) 432-1900
Fax: (408) 434-0507
www.linear.com

LTC CONFIDENTIAL
FOR CUSTOMER
USE ONLY

TITLE: FABRICATION DRAWING
SPI/DIGITAL UMODULE ISOLATOR

REV. 1

IC NO. LTM2893CV-S
DEMO CIRCUIT 1957A