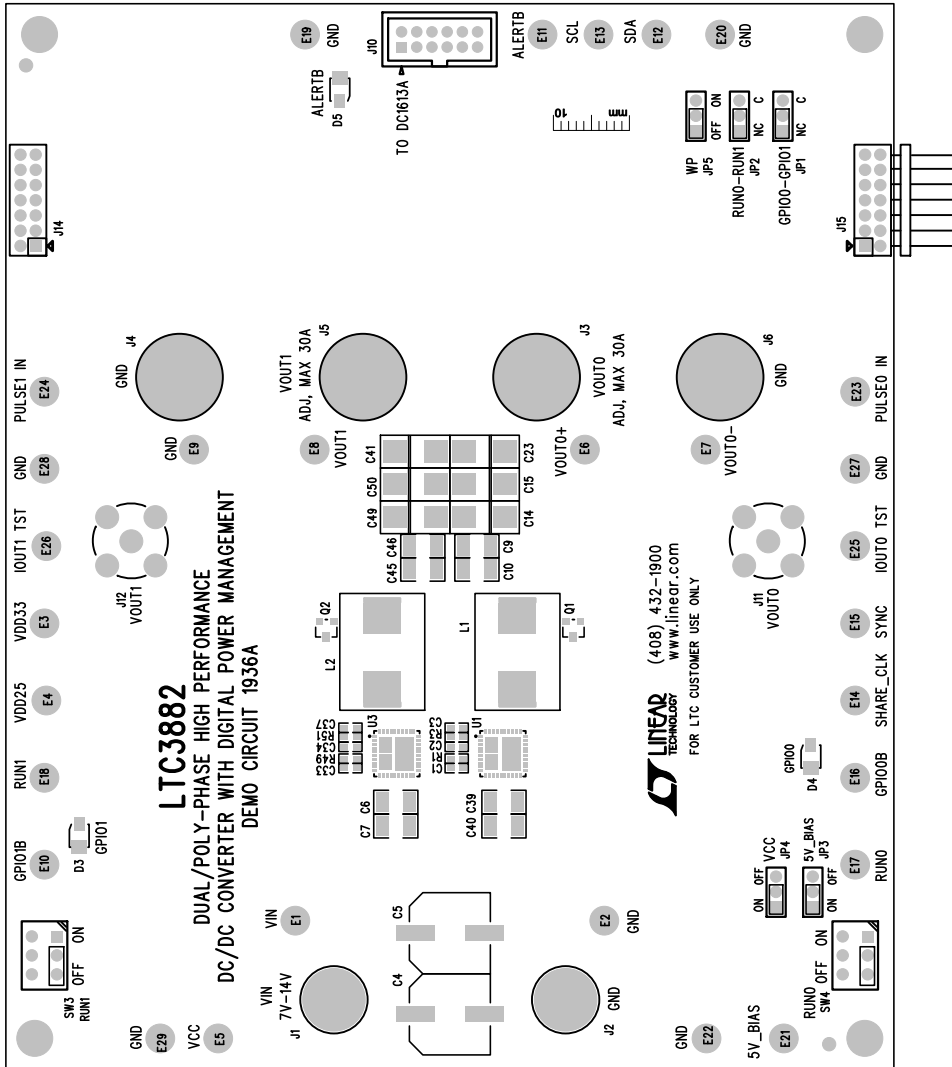
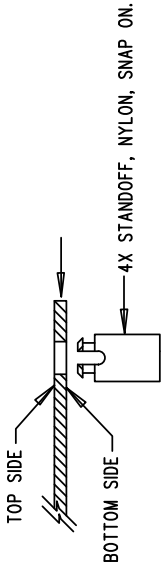


REVISION HISTORY			
ECO	REV	DESCRIPTION	DATE
	2	PRODUCTION	6-14-14

- NOTES: UNLESS OTHERWISE SPECIFIED**
1. WORKMANSHIP SHALL BE IN ACCORDANCE WITH IPC-A-610.
  2. ASSEMBLY PROCESS SHALL INCLUDE: REFLOW SOLDER SIDE SMD.  
MAXIMUM SOLDER TEMPERATURE IS 240 DEGREES CELSIUS.
  3. PARTS TO OMIT WILL BE SPECIFIED ON THE BILL OF MATERIALS.  
LOCATIONS OF OMITTED PARTS SHALL BE FREE OF SOLDER.  
MASK THE SOLDER STENCIL WHERE SMT PARTS ARE OMITTED.
  4. INSTALL SHUNTS AS SHOWN ON ASSY DRAWING.
  5. DEPANELIZE BOARDS AFTER ASSEMBLY AND ROUTE-OUT THE  
BREAKOUT TABS ON FOUR SIDES OF THE BOARD EDGE.
  6. DO NOT APPLY ANY KIND OF ASSEMBLY STAMP OR QA STAMP  
TO ANY BOARD.
  7. INSTALL 4 STANDOFFS AT 4 LOCATIONS AS SHOWN BELOW:



APPROVALS		LINEAR TECHNOLOGY		1630 MCCARTHY BLVD MALPAS, CA 95035 PH: (408) 432-1900 www.linear.com LTC CONFIDENTIAL - FOR CUSTOMER USE ONLY
PCB DES.	HZ	TITLE: TOP ASSEMBLY DRAWING		DUAL/POLY-PHASE HIGH PERFORMANCE
APP ENG.	Y1 S.	DC/DC CONVERTER WITH DIGITAL POWER MANAGEMENT		REV.
		SIZE IC NO. LTC3882EJ		2
		N/A		DEMO CIRCUIT 1936A
SCALE = NONE		FILENAME: DC1936A-1.PCB		SHT 1 OF 2