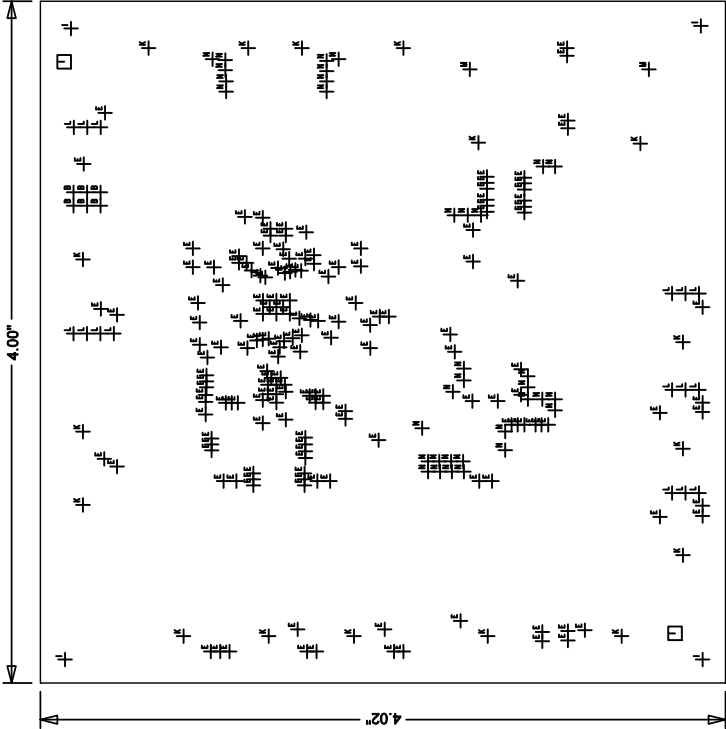
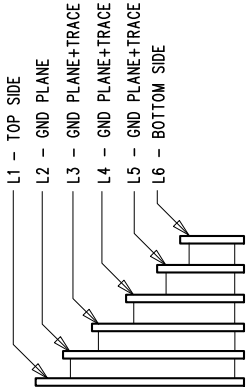


REVISION HISTORY			
ECO	REV	DESCRIPTION	APP. ENG. DATE
-	2	PRODUCTION	DING L. 1-31-14

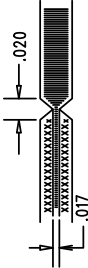


LAYER STRUCTURE



NOTES: UNLESS OTHERWISE SPECIFIED

1. FAB PER IPC-A-600.
2. MATERIAL: -LEAD FREE ASSEMBLY COMPLIANT, ISOLA FR-370HR OR EQUIVALENT.  
-FINISHED THICKNESS TO BE 0.062 +/- .005  
-TOTAL OF 6 LAYERS WITH 2 OZ. CU ON THE OUTER LAYERS AND 1 OZ. CU ON THE INNER LAYERS.  
-FLAMMABILITY RATING: 94 V-0 MINIMUM.
3. SIZE: CUT TO DIMENSIONS AND TOLERANCES SHOWN.  
0.00 ARE PRIMARY DATUMS.
4. DRILLING: -DRILL HOLES PER SCHEDULE. PLATE THROUGH HOLES WITH COPPER, 0.001" THICK MIN.  
-ALL HOLE SIZES ARE SPECIFIED AFTER PLATING.  
-HOLE LOCATION TOLERANCES ARE +/-0.003 IN RELATION TO CENTER
5. FINISH: -SMOBC USING LPI BOTH SIDES, COLOR GREEN.  
-GOLD IMMERSION BOTH SIDES.  
-FOR SILKScreens: USE WHITE NON-CONDUCTIVE INK.
6. DO NOT ALTER ARTWORK e.g. TO ADD LOGO OR DATE CODE. PAD SIZE CAN BE MODIFIED TO MEET END FINISH.
7. PCBs ARE TO BE ROHS COMPLIANT.
8. SCORING FOR PANELIZED PCB (PRODUCTION FAB ONLY):



SIZE	QTY	SYM	PLATED	TOL
0.07	2		NO	+/-0.003
0.035	6		YES	+/-0.003
0.01	174		YES	+/-0.003
0.18701	4		NO	+/-0.003
0.095	17		YES	+/-0.003
0.02992	16		YES	+/-0.003
0.20512	2		YES	+/-0.003
0.02	35		YES	+/-0.003

UNLESS OTHERWISE SPECIFIED DIMENSIONS ARE IN INCHES TOLERANCES: 0.XX = ± 0.01 0.XXX = ± 0.005 INTERPRET DIM AND TOL PER ASME Y14.5M-1994 THIRD ANGLE PROJECTION			
APPROVALS		1830 MCCARTHY BLVD MILPITAS, CA 95035 PH: (408)432-1900 WWW.LINEARTECH.COM LTC CONFIDENTIAL FOR CUSTOMER USE ONLY	
PCB DES.	HZ	LINEAR TECHNOLOGY	
APP ENG.	DING L.	TITLE: FABRICATION DRAWING	
		TRIPLE OUTPUT SYNCHRONOUS STEP-UP/DUAL STEP-DOWN SUPPLY	
SIZE	IC NO.	REV	
N/A	LTC3899EFE	2	
SCALE = NONE		FILENAME: DC1898A-2.PCB	
		SHT 1 OF 1	