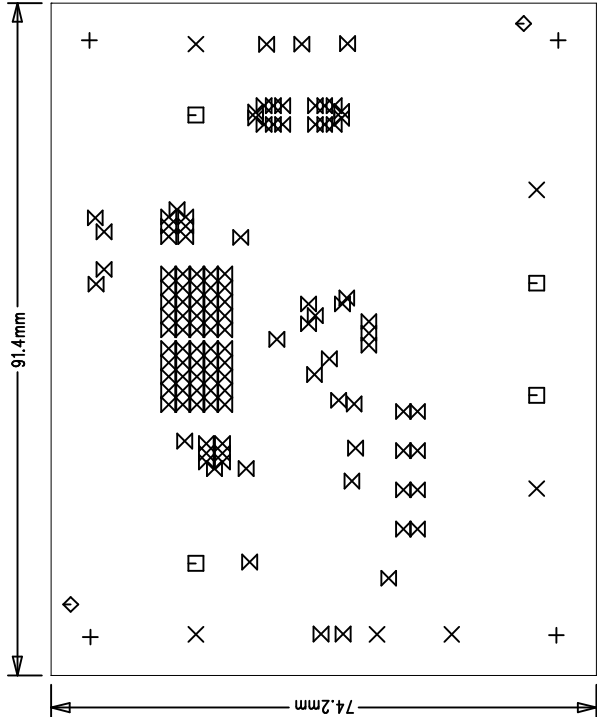


REVISION HISTORY			
ECO	REV	DESCRIPTION	DATE
—	3	PRODUCTION	MITCHELL L. 6-5-12

NOTES: UNLESS OTHERWISE SPECIFIED

1. FAB PER IPC-A-600
2. MATERIAL: -LEAD FREE ASSEMBLY COMPLIANT, ISOLA FR-370HR OR EQUIVALENT.
-FINISHED THICKNESS TO BE 1.6 +/- 0.07mm
-TOTAL OF 2 LAYERS WITH 2 OZ. CU.
-FLAMMABILITY RATING: 94 V-0 MINIMUM .
3. SIZE: CUT TO DIMENSIONS AND TOLERANCES SHOWN.
0.00 ARE PRIMARY DATUMS.
4. DRILLING: DRILL HOLES PER SCHEDULE. PLATE THROUGH HOLES WITH COPPER, 39.37mm THICK MIN.
ALL HOLE SIZES ARE SPECIFIED AFTER PLATING.
HOLE LOCATION TOLERANCES ARE +/-0.07mm IN RELATION TO CENTER
5. FINISH: -SNOBC USING LPI BOTH SIDES, COLOR GREEN.
-GOLD IMMERSION BOTH SIDES.
-FOR SILKSCREEN: BOTH SIDES USE WHITE NON-CONDUCTIVE INK.
6. DO NOT ALTER ARTWORK e.g. TO ADD LOGO OR DATE CODE.
PAD SIZE CAN BE MODIFIED TO MEET END FINISH.
7. PCBs ARE TO BE RoHS COMPLIANT.
8. BOARDS SHALL BE PANELIZED USING ROUTE AND RETAIN METHOD.



SIZE	QTY	SYM	PLATED	TOL
4.7498	4	+	YES	+/-0.07
2.413	6	X	YES	+/-0.07
5.207	4	□	YES	+/-0.07
1.778	2	◇	NO	+/-0.07
0.254	117	⊗	YES	+/-0.07

UNLESS OTHERWISE SPECIFIED
DIMENSIONS ARE IN MILLIMETERS
TOLERANCES:
0.XX = ± 0.25
0.XXX = ± 0.127
INTERPRET DIM AND TOL
PER ASME Y14.5M-1994
THIRD ANGLE PROJECTION

APPROVALS		TITLE: FABRICATION DRAWING	
PCB DES.	HZ	VERY HIGH VOLTAGE SURGE STOPPER	
APP ENG.	MITCHELL L		
SCALE = NONE		SIZE	REV
		N/A	3
		IC NO. LTC4366HTS8 FAMILY DEMO CIRCUIT 1850A	
		FILENAME: DC1850A-3.PCB	
		SHT 1 OF 1	

TECHNOLOGY

1630 MCCARTHY BLVD
MILPITAS, CA 95035
PH: (408)432-1900
WWW.LINEAR.COM
LTC CONFIDENTIAL -
FOR CUSTOMER USE ONLY