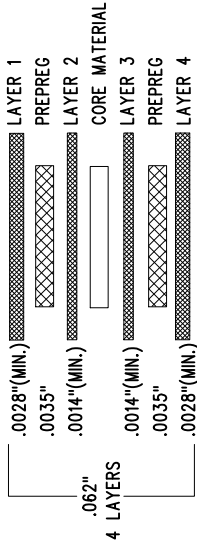
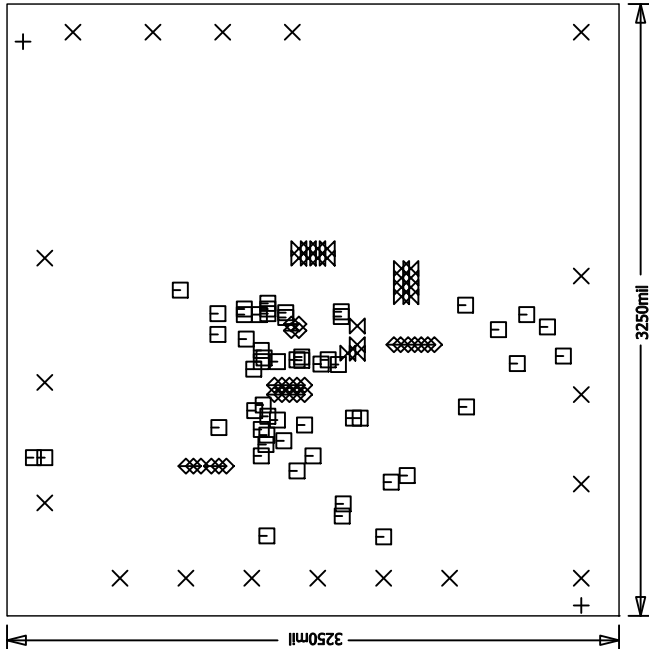
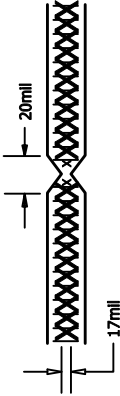


LAYER STRUCTURE



NOTES : UNLESS OTHERWISE SPECIFIED

1. FAB PER IPC-A-600.
2. MATERIAL: FR-370HR OR EQUIVALENT.
2 OZ. COPPER FINISH ON EXTERNAL LAYERS.
1 OZ. COPPER FINISH ON INTERNAL LAYERS.
THICKNESS .062 +/- .006 TOTAL OF 4 LAYERS.
FLAMMABILITY RATING: 94 V-0 MINIMUM .
3. SIZE: DIMENSIONS SHOWN AND TOLERANCES +/-0.010.
4. DRILLING: DRILL HOLES PER SCHEDULE. PLATE THROUGH HOLES WITH COPPER, .001 INCH THICK MIN. ALL HOLE SIZES ARE SPECIFIED AFTER PLATING.
HOLE LOCATION TOLERANCES ARE +/-3MIL
INCH IN RELATION TO CENTER
5. FINISH: SMOBC USING LPI BOTH SIDES COLOR GREEN.
GOLD IMMERSION BOTH SIDES.
6. SILKSCREEN : USING WHITE NON-CONDUCTIVE EPOXY INK.
7. DO NOT ALTER ARTWORK TO ADD LOGO OR DATE CODE BUT MAY MODIFY PAD SIZE TO MEET END FINISH.
8. PCB's SHOULD BE RoHS COMPLIANT.
9. SCORING: FOR PANELIZED FABRICATION ONLY



SIZE	QTY	SYM	PLATED	TOL
70	2	+	NO	±3mil
94	18	×	YES	±3mil
6	55	□	YES	±3mil
8	27	◇	YES	±3mil
20	20	⊗	YES	±3mil

- ADDITIONAL REQUIREMENT FOR PROTOTYPE FAB ONLY:
1. OUTGOING INSPECTION REPORT (BASED ON ACTUAL MEASUREMENTS AND CROSS SECTION).
- ADDITIONAL REQUIREMENTS FOR PRODUCTION FAB ONLY:
1. PROVIDE COMPLIANCE CERTIFICATES FOR RoHS, REACH AND CONFLICT-FREE MINERALS.
 2. SOLDERABILITY BOARD WITH TEST RESULTS.
 3. OUTGOING INSPECTION REPORT (BASED ON ACTUAL MEASUREMENTS AND CROSS SECTION).
 4. VACUUM PACKED WITH DESICCANT.
 5. FULL PANEL WITH NO REJECT.

1630 MCCARTHY BLVD
MILPITAS, CA 95035
PH: (408)62-1900
WWW.LINEAR.COM
LINEAR TECHNOLOGY
FOR CUSTOMER USE ONLY

TITLE: FABRICATION DRAWING
110V LED CONTROLLER WITH SPREAD
SPECTRUM FREQUENCY MODULATION

SIZE	IC NO.	REV
N/A	LT3795EFE	DC1827A

UNLESS OTHERWISE SPECIFIED
DIMENSIONS ARE IN INCHES
TOLERANCES:
0.1X = ± 0.01
0.00X = ± 0.005
INTERPRET DIM AND TOL
PER ASME Y14.5M-1994
THIRD ANGLE PROJECTION

FILENAME: DC1827A-Rev3.PCB

SHT 1 OF 1