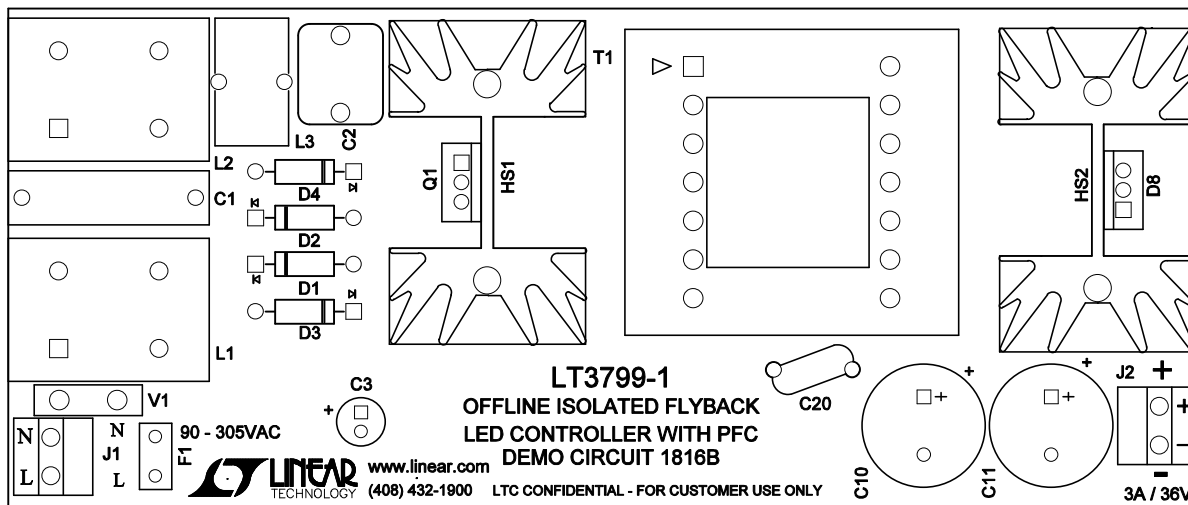



NOTES: UNLESS OTHERWISE SPECIFIED,

1. WORKMANSHIP SHALL BE IN ACCORDANCE WITH IPC-A-610.
2. ASSEMBLY PROCESS SHALL INCLUDE: REFLOW SOLDER SMD. MAXIMUM SOLDER TEMPERATURE, 240 DEG. C.
3. PARTS TO OMIT WILL BE SPECIFIED ON THE BILL OF MATERIALS. LOCATIONS OF OMITTED PARTS SHALL BE FREE OF SOLDER. MASK THE SOLDER STENCIL WHERE SMT PARTS ARE OMITTED.
4. DEPANELIZE BOARDS AFTER ASSEMBLY AND ROUTE-OUT THE BREAKOUT TABS ON FOUR SIDES OF THE BOARD EDGE.
5. DO NOT APPLY ANY KIND OF ASSEMBLY STAMP OR QA STAMP TO ANY BOARD.



APPROVALS		 1630 MCCARTHY BLVD MILPITAS, CA 95035 PH: (408)432-1900 www.linear.com LTC CONFIDENTIAL - FOR CUSTOMER USE ONLY	
PCB DES.	MI		
APP. ENG.	GEORGE Q.	TITLE: TOP ASSEMBLY DRAWING, OFFLINE ISOLATED FLYBACK LED CONTROLLER WITH PFC	
		SIZE	IC NO. LT3799EMSE-1
		N/A	PCB NO. DEMO CIRCUIT 1816B
SCALE: NONE		REV	1
FILENAME: 1816B-Rev1.PCB		SHT 1 of 2	