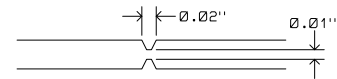


REVISION HISTORY

ECO	REV	DESCRIPTION	APPROVED	DATE
-	2	2ND PROTOTYPE	KEITH B.	3-4-15

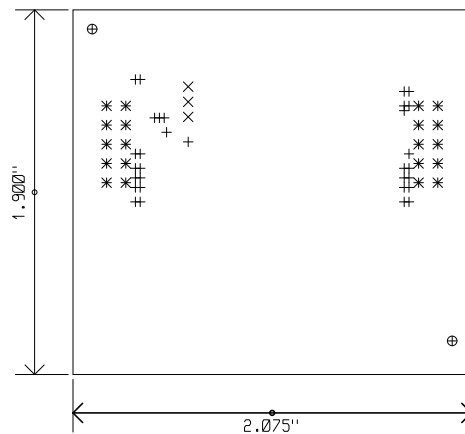
NOTES: UNLESS OTHERWISE SPECIFIED

- FAB PER IPC-A-600
- MATERIAL: -LEAD FREE ASSEMBLY COMPLIANT, ISOLA FR-370HR or EQUIVALENT
-FINISHED THICKNESS TO BE $0.062'' \pm 0.005''$
-TOTAL OF 4 LAYERS WITH 1 OZ. CU ON THE OUTER LAYERS
AND 0.5 OZ. CU ON THE INNER LAYERS
-FLAMMABILITY RATING: 94v-0 MINIMUM
- SIZE: CUT TO DIMENSIONS AND TOLERANCES SHOWN
- DRILLING: -DRILL HOLES PER SCHEDULE. PLATE THROUGH HOLES WITH COPPER, $0.001''$ THICK MIN.
-ALL HOLE SIZES ARE SPECIFIED AFTER PLATING
-HOLE LOCATION TOLERANCES ARE $\pm 0.003''$ IN RELATION TO CENTER
- FINISH: -SMOBC USING LPI BOTH SIDES, COLOR GREEN MATTE
-GOLD IMMERSION (ENIG) BOTH SIDES
-SILKSCREEN TOP SIDE WITH WHITE NON-CONDUCTIVE INK
- DO NOT ALTER ARTWORK e.g. TO ADD LOGO OR DATE CODE
PAD SIZE MAY BE MODIFIED TO MEET END FINISH
- PCBS ARE TO BE RoHS COMPLIANT
- DESIGN HAS NON-SOLDER MASK DEFINED PADS ON U1
U1 SOLDER MASK SIZE IS 32 MIL AND PAD SIZE IS 25 MIL
DO NOT CHANGE ANY SIZE ON THIS COMPONENT
- SCORING FOR PANELIZED PCB, SCORING ANGLE 30 DEG.:

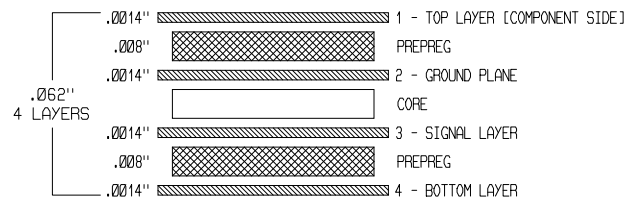



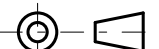
SIZE	QTY	SYM	PLATED	TOL
$0.010''$	31	+	YES	$\pm 0.003''$
$0.032''$	3	x	YES	$\pm 0.003''$
$0.040''$	20	*	YES	$\pm 0.003''$
$0.070''$	2	⊕	NO	$\pm 0.003''$

SHOWN FROM COMPONENT SIDE



LAYER STRUCTURE



UNLESS OTHERWISE SPECIFIED		APPROVALS			1630 McCarthy Blvd. Milpitas, CA 95035 Phone: (408) 432-1900 Fax: (408) 434-0507 www.linear.com		LTC CONFIDENTIAL FOR CUSTOMER USE ONLY
DIMENSIONS ARE IN INCHES TOLERANCES: Ø.XX" = +/- 0.01" Ø.XXX" = +/- 0.005" INTERPRET DIM AND TOL PER ASME Y14.5M-1994		PCB DES.	KEITH B.				
THIRD ANGLE PROJECTION		APP ENG.	KEITH B.				
							
				TITLE: FABRICATION DRAWING SPI/DIGITAL OR I2C uMODULE ISOLATOR, LOW EMI			
				SIZE	IC NO.	REV.	
				N/A	LTM2887CY-3S/-5S/-3I/-5I DEMO CIRCUIT 1791A	2	
SCALE = 1:1				DATE: Wednesday March 4, 2015			SHEET 1 OF 1