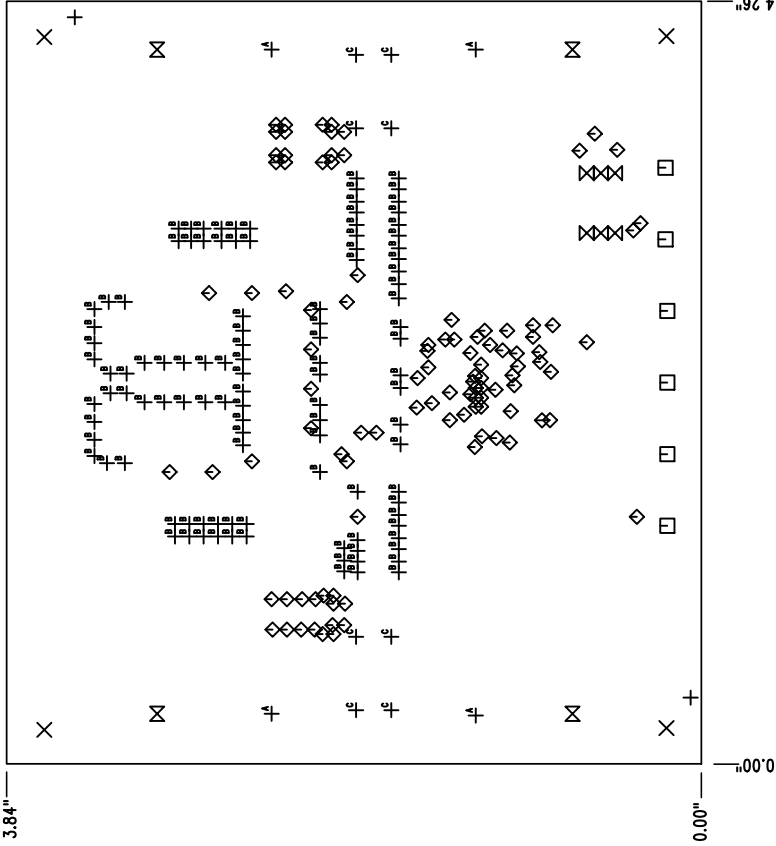
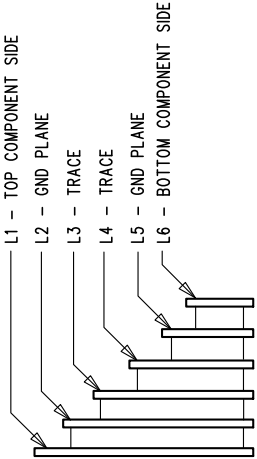


REVISION HISTORY			
ECO	REV	DESCRIPTION	APP. ENG.
1	1	PRODUCTION	JW
			2-22-17

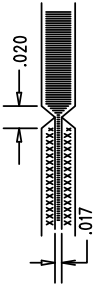


LAYER STRUCTURE



NOTES: UNLESS OTHERWISE SPECIFIED

1. FAB PER IPC-A-600.
2. MATERIAL: -LEAD FREE ASSEMBLY COMPLIANT, ISOLA FR-370HR OR EQUIVALENT.  
-FINISHED THICKNESS TO BE 0.062" +/- .005"  
-TOTAL OF 6 LAYERS WITH 2 OZ. CU ON THE OUTER LAYERS AND 1 OZ. CU ON THE INNER LAYERS.  
-FLAMMABILITY RATING: 94 V-0 MINIMUM.
3. SIZE: CUT TO DIMENSIONS AND TOLERANCES SHOWN.  
0.00" ARE PRIMARY DATUMS.
4. DRILLING: -DRILL HOLES PER SCHEDULE. PLATE THROUGH HOLES WITH COPPER, 0.001" THICK MIN.  
-ALL HOLE SIZES ARE SPECIFIED AFTER PLATING.  
-HOLE LOCATION TOLERANCES ARE +/-0.003" IN RELATION TO CENTER
5. FINISH: -SNOBC USING LPI BOTH SIDES, COLOR GREEN.  
-GOLD IMMERSION BOTH SIDES.  
-FOR SILKScreens: USE WHITE NON-CONDUCTIVE INK.
6. DO NOT ALTER ARTWORK e.g. TO ADD LOGO OR DATE CODE. PAD SIZE CAN BE MODIFIED TO MEET END FINISH.
7. PCBs ARE TO BE RoHS COMPLIANT.
8. SCORING FOR PANELIZED PCB (PRODUCTION FAB ONLY):



SIZE	QTY	SYM	PLATED	TOL
0.07	2	+	NO	+/-0.003
0.187	4	X	YES	+/-0.003
0.094	6	□	YES	+/-0.003
0.01	103	◇	YES	+/-0.003
0.031	6	⊗	YES	+/-0.003
0.063	4	⊗	YES	+/-0.003
0.205	4	⊕ <sup>A</sup>	YES	+/-0.003
0.025	110	⊕ <sup>B</sup>	YES	+/-0.003
0.04	8	⊕ <sup>C</sup>	YES	+/-0.003

UNLESS OTHERWISE SPECIFIED

DIMENSIONS ARE IN INCHES

TOLERANCES:

0.XX" = ±0.01"

0.XXX" = ±0.005"

INTERPRET DIM AND TOL

PER ASME Y14.5M-1994

THIRD ANGLE PROJECTION

APPROVALS

PCB DES. HZ

APP ENG. JW

SCALE = NONE

LINEAR TECHNOLOGY

1830 MCCARTHY BLVD

MILPITAS, CA 95035

PH: (408)432-7800

FAX: (408)432-7801

LTC CONFIDENTIAL - FOR CUSTOMER USE ONLY

TITLE: FABRICATION DRAWING

HIGH EFFICIENCY 12V/12A BUCK-BOOST CONVERTER

SIZE IC NO. LTC3789EGN

N/A DEMO CIRCUIT 1757B

REV 1

FILENAME: DC1757B-1.PCB

SHT 1 OF 1