

LINEAR
TECHNOLOGY
www.linear.com
(408) 432-1900

SVIN

JP1
ON
OFF
RUN

JP5
VOUT
GND
EXTVCC
EXTVCC

EXTVCC

GND

INTVCC

VIN *

GND

LTC3646EDE-
DEMO CIRCUIT 1731A-

GND

PGOOD

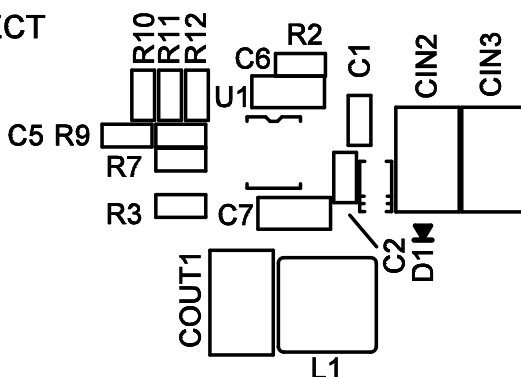
SYNC

MODE / SYNC

JP2
BURST
SYNC
FCC

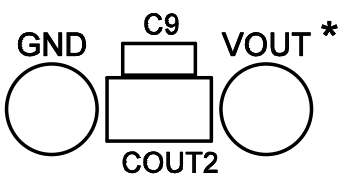
VOUT SELECT

3.3V
5V
JP3



mm
10

**HIGH EFFICIENCY LOW QUIESCENT
CURRENT STEP-DOWN CONVERTER**



*

VIN	VOUT
4.5V-40V	3.3V/1A
7V-40V	5V/1A

LTC CONFIDENTIAL -
FOR CUSTOMER USE ONLY

LINEAR TECHNOLOGY CORPORATION

1731A REV 3
09/21/12

TOP SILKSCREEN