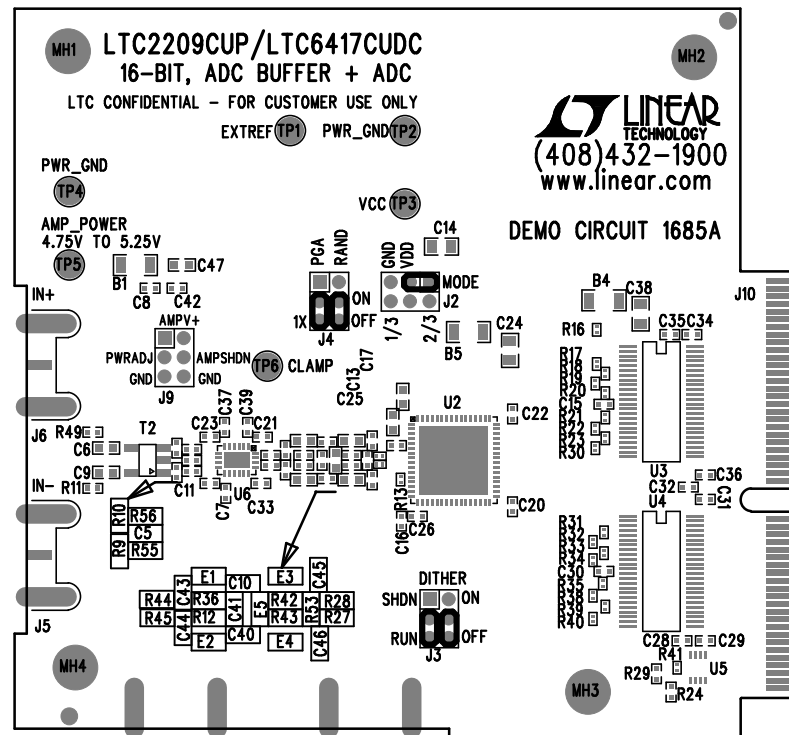


REVISION HISTORY				
ECO	REV	DESCRIPTION	APP. ENG.	DATE
-	3	3RD PROTOTYPE	JOSEF A.	05-25-12

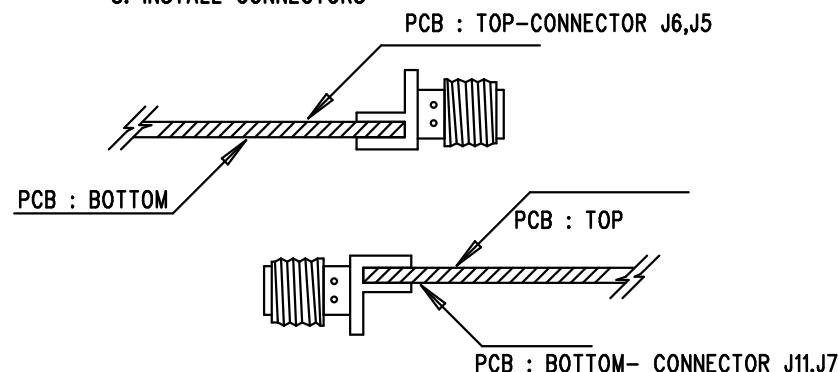


SILKSCREEN TOP

LINEAR TECH. CORP. DATE: 05-25-12  
 LTC2209CUP/LTC6417CUDC DEMO CIRCUIT 1685A-3  
 16-BIT, ADC BUFFER + ADC

## NOTES: UNLESS OTHERWISE SPECIFIED

1. WORKMANSHIP SHALL BE IN ACCORDANCE WITH IPC-A-610.
2. ASSEMBLY PROCESS SHALL INCLUDE: REFLOW SOLDER BOTH SIDE SMD.
3. PARTS TO OMIT WILL BE SPECIFIED ON THE BILL OF MATERIALS. LOCATIONS OF OMITTED PARTS SHALL BE FREE OF SOLDER. MASK THE SOLDER STENCIL WHERE SMT PARTS ARE OMITTED.
4. INSTALL SHUNTS AS SHOWN ON ASSY DRAWING.
5. DEPANELIZE BOARDS AFTER ASSEMBLY AND ROUTE-OUT THE BREAKOUT TABS ON FOUR SIDES OF THE BOARD EDGE.
6. DO NOT APPLY ANY KIND OF ASSEMBLY STAMP OR QA STAMP TO ANY BOARD.
7. INSTALL 4 STANDOFFS AT 4 LOCATIONS MH1-MH4
8. INSTALL CONNECTORS



## APPROVALS

PCB DES.	AK
APP ENG.	JOSEF A.



1630 MCCARTHY BLVD  
 MILPITAS, CA 95035  
 PH: (408)432-1900  
 www.linear.com  
 LTC CONFIDENTIAL-  
 FOR CUSTOMER USE ONLY

TITLE: TOP ASSEMBLY DRAWING

16-BIT, ADC BUFFER + ADC

SIZE	IC NO. LTC2209CUP/LTC6417CUDC	REV.
N/A	DEMO CIRCUIT 1685A	3

SCALE = NONE

FILENAME: DC1685A-3.PCB

SHT 1 OF 2