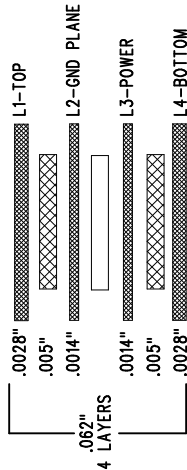


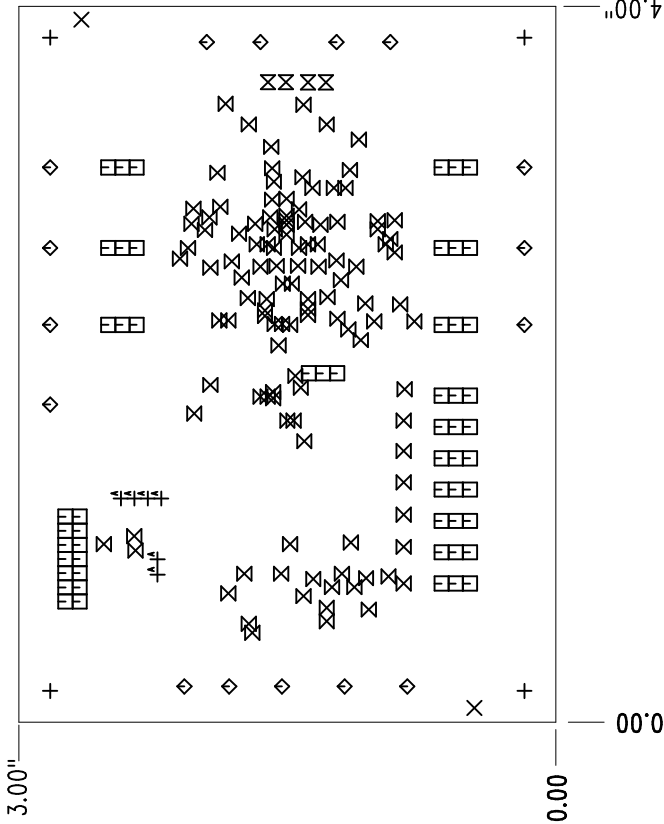
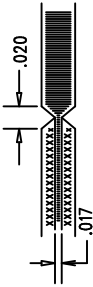
REVISION HISTORY			
ECO	REV	DESCRIPTION	APP. ENG. DATE
-	2	PRODUCTION	MARK T. 2-3-11

LAYER STRUCTURE



NOTES: UNLESS OTHERWISE SPECIFIED

- 1. FAB PER IPC-A-600.
- 2. MATERIAL: -LEAD FREE ASSEMBLY COMPLIANT, ISOLA FR-370HR OR EQUIVALENT.
 - FINISHED THICKNESS TO BE 0.062" +/- .005"
 - TOTAL OF 4 LAYERS WITH 2 OZ. CU ON THE OUTER LAYERS AND 1 OZ. CU ON THE INNER LAYERS.
 - FLAMMABILITY RATING: 94 V-0 MINIMUM.
- 3. SIZE: CUT TO DIMENSIONS AND TOLERANCES SHOWN. 0.00" ARE PRIMARY DATUMS.
- 4. DRILLING: -DRILL HOLES PER SCHEDULE. PLATE THROUGH HOLES WITH COPPER, 0.001" THICK MIN.
 - ALL HOLE SIZES ARE SPECIFIED AFTER PLATING.
 - HOLE LOCATION TOLERANCES ARE +/-0.003" IN RELATION TO CENTER
- 5. FINISH: -SNOBC USING LPI BOTH SIDES, COLOR GREEN.
 - GOLD IMMERSION BOTH SIDES.
 - (LEAD FREE SOLDER CAN BE USED FOR PROTOTYPE)
 - FOR SILKSCREEN: USE WHITE NON-CONDUCTIVE INK.
- 6. DO NOT ALTER ARTWORK e.g. TO ADD LOGO OR DATE CODE. PAD SIZE CAN BE MODIFIED TO MEET END FINISH.
- 7. PCBs ARE TO BE RoHS COMPLIANT.
- 8. SCORING FOR PANELIZED PCB (PRODUCTION FAB ONLY):



SIZE	QTY	SYM	PLATED	TOL
0.187	4	+	NO	+/-0.003
0.07	2	X	NO	+/-0.003
0.035	56	□	YES	+/-0.003
0.065	16	◇	YES	+/-0.003
0.01	118	⊗	YES	+/-0.003
0.04	4	⊗	YES	+/-0.003
0.03	6	⊕	YES	+/-0.003

UNLESS OTHERWISE SPECIFIED
DIMENSIONS ARE IN INCHES
TOLERANCES:
0.XX" = ±0.01"
0.XXX" = ±0.005"
INTERPRET DIM AND TOL
PER ASME Y14.5M-1994
THIRD ANGLE PROJECTION

APPROVALS

PCB DES.	JW
APP ENG.	MARK T.
SCALE = NONE	

LINEAR TECHNOLOGY

1530 MCCARTHY BLVD
MURFreesboro, TN 37132
PH: (615) 891-1000
WWW.LINEARTECH.COM
E: SALES@LINEARTECH.COM
FOR CUSTOMER USE ONLY

TITLE: FABRICATION DRAWING
DUAL, SPI, IOUT, 18/16-BIT DAC

SIZE	IC NO.	LTC2758/2CLX	REV
N/A		DEMO CIRCUIT 1684A	2
FILENAME: 1684A-2.PCB			SHT 1 OF 1