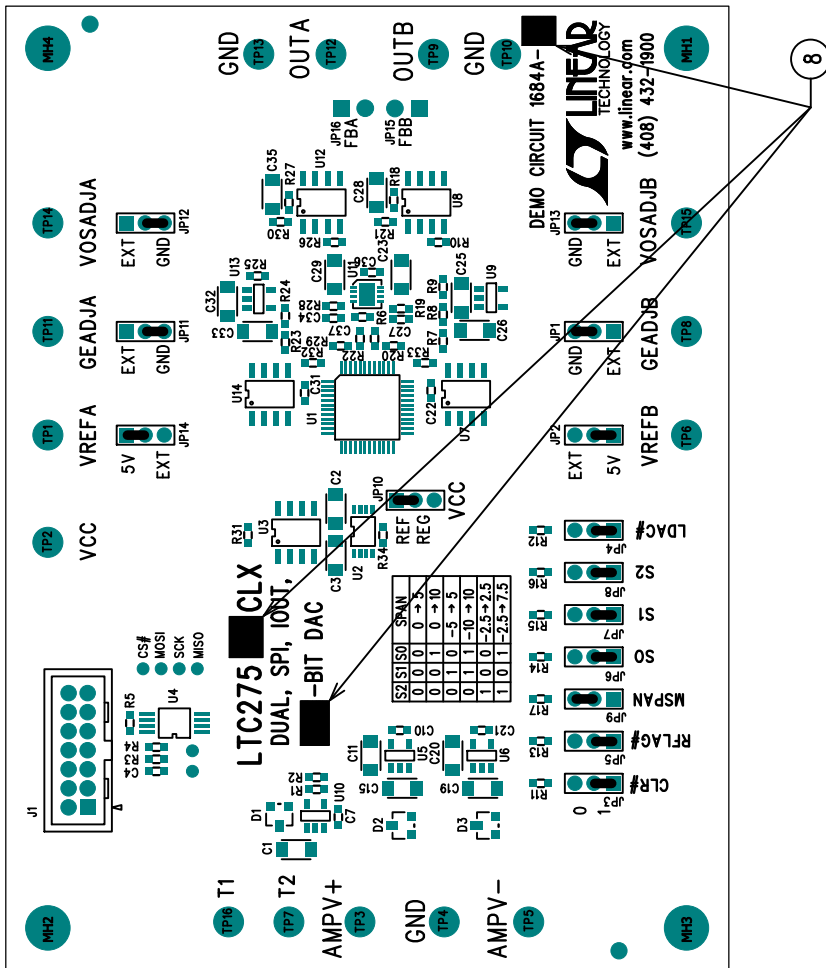


ECO	REV	DESCRIPTION	APP. ENG.	DATE
-	2	PRODUCTION	MARK T.	2-3-11

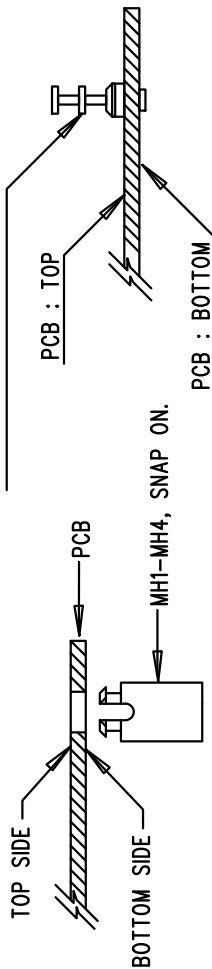
NOTES: UNLESS OTHERWISE SPECIFIED

1. WORKMANSHIP SHALL BE IN ACCORDANCE WITH IPC-A-610.
2. ASSEMBLY PROCESS SHALL INCLUDE: REFLOW SOLDER TOP SIDE SMD. MAXIMUM SOLDER TEMPERATURE IS 240 DEGREES CELSIUS.
3. PARTS TO OMIT WILL BE SPECIFIED ON THE BILL OF MATERIALS. LOCATIONS OF OMITTED PARTS SHALL BE FREE OF SOLDER. MASK THE SOLDER STENCIL WHERE SMT PARTS ARE OMITTED.
4. INSTALL SHUNTS AS SHOWN ON ASSY DRAWING.
5. DEPANELIZE BOARDS AFTER ASSEMBLY AND ROUTE-OUT THE BREAKOUT TABS ON FOUR SIDES OF THE BOARD EDGE.
6. DO NOT APPLY ANY KIND OF ASSEMBLY STAMP OR QA STAMP TO ANY BOARD.
7. INSTALL 4 STANDOFFS AT 4 LOCATIONS AS SHOWN.
8. MARK EACH LTC PART NUMBER, BIT AND ASSEMBLY TYPE WITH BLACK PERMANENT MARKER AS SHOWN IN TABLE BELOW:


ASSY	U1	-BIT
-A	LTC2758ACLX	18
-B	LTC2752ACLX	16



TURRETS : MILL-MAX 2308-2



## APPROVALS

PCB DES.	JW		<b>www.linear.com</b> <b>LTC CONFIDENTIAL -</b> <b>FOR CUSTOMER USE ONLY</b>
APP ENG.	MARK T.		
TITLE: TOP ASSEMBLY DRAWING		DUAL, SPI, IOUT, 18/16-BIT DAC	
SIZE	IC NO.	LTC2758/2ACLX	REV.
N/A		DEMO CIRCUIT 1684A	2
SCALE = NONE		FILENAME: 1684A-2.PCB	
		SHT 1 OF 2	

1630 MCCARTHY BLVD  
MILPITAS, CA 95035  
PH: (408) 432-1900  
[www.linear.com](http://www.linear.com)  
LTC CONFIDENTIAL -  
FOR CUSTOMER USE ONLY



**TITLE: TOP ASSEMBLY DRAWING**

DUAL, SPI, IOUT, 18/16-BIT DAC

SIZE	IC NO.	REV.
N/A	LTC2758/2ACLX DEMO CIRCUIT 1684A	2

FILENAME:	1684A-2.PCB	SHT 1 OF 2
-----------	-------------	------------