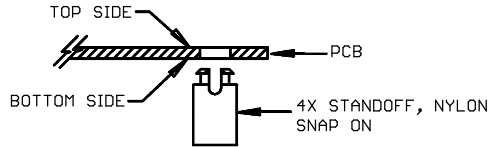


REVISION HISTORY

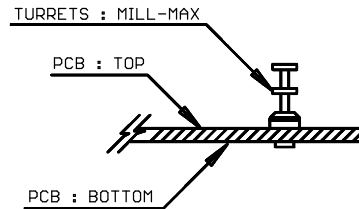
ECO	REV	DESCRIPTION	APPROVED	DATE
-	1	PRODUCTION	MIKE P.	09/19/2014

NOTES: UNLESS OTHERWISE SPECIFIED

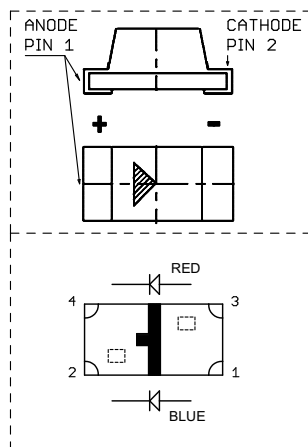
1. WORKMANSHIP SHALL BE IN ACCORDANCE WITH IPC-A-610.
2. PARTS TO OMIT WILL BE SPECIFIED ON THE BILL OF MATERIALS. MASK THE SOLDER STENCIL WHERE SMT PARTS ARE OMITTED.
3. DEPANELIZE BOARDS AFTER ASSEMBLY AND ROUTE-OUT THE BREAKOUT TABS ON 4 SIDES OF THE BOARD EDGE.
4. ASSY PROCESS SHALL INCLUDE: REFLOW SOLDER TOP SIDE SMD.
5. DO NOT APPLY ANY KIND OF ASSEMBLY STAMP OR QA STAMP ON ANY BOARD.
6. INSTALL 4 STANDOFFS AT 4 CORNERS FROM THE BOTTOM SIDE.



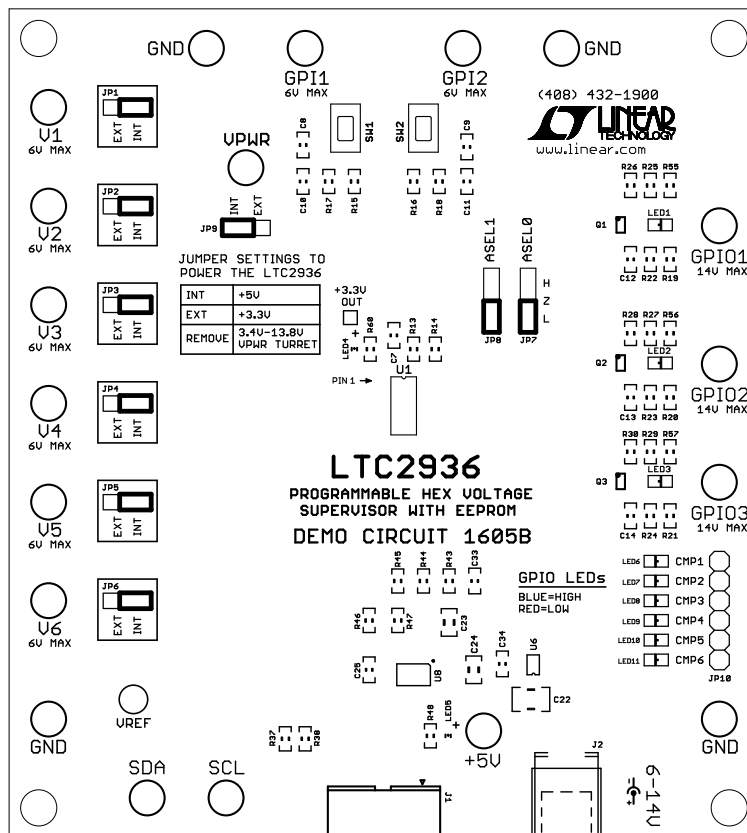
7. INSTALL TURRETS AS SHOWN BELOW:



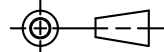
8. INSTALL LEDS AS SHOWN BELOW:



9. INSTALL SHUNTS AS SHOWN WITH THIS SYMBOL



UNLESS OTHERWISE SPECIFIED
DIMENSIONS ARE IN INCHES
TOLERANCES ON ANGLE +/- 1°
0.XX" = +/- 0.01"
0.XXX" = +/- 0.005"
INTERPRET DIM AND TOL
PER ASME Y14.5M-1994



DO NOT SCALE DRAWING

APPROVALS

NAME	DATE
PCB DES. R.S.	09-19-14
ENG MIKE P.	09-19-14


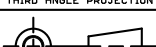


1630 MCCARTHY BLVD.
MILPITAS, CA 95033
PH: (408) 432-1900
LTC CONFIDENTIAL
FOR CUSTOMER USE ONLY

TITLE: TOP ASSEMBLY DRAWING
LTC2936 PROGRAMMABLE HEX VOLTAGE
SUPERVISOR WITH EEPROM

SIZE	IC NO.	REV
N/A	LTC2936 DEMO CIRCUIT 1605B	1

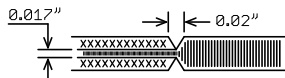
FILENAME: DC1605B_Rev1 SHEET 1 OF 13

UNLESS OTHERWISE SPECIFIED DIMENSIONS ARE IN INCHES TOLERANCES ON ANGLE +/- 1° 0.1XX" = +/- 0.01° 0.XXX" = +/- 0.005° INTERPRET DIM AND TOL PER ASME Y14.5M-1994	APPROVALS			 <div>1630 MCCARTHY BLVD. HILTIPLATS, CA 95033 PH: (408) 432-1508 LTC CONFIDENTIAL FOR CUSTOMER USE ONLY</div>
		NAME	DATE	
	PCB DES.	R.S.	09-19-14	
	ENG	MIKE P.	09-19-14	
THIRD ANGLE PROJECTION				TITLE: BOTTOM ASSEMBLY DRAWING LTC2936 PROGRAMMABLE HEX VOLTAGE SUPERVISOR WITH EEPROM
				SIZE N/A
				IC NO. LTC2936 DEMO CIRCUIT 1605B
				REV 1
DO NOT SCALE DRAWING	SCALE: NONE			FILENAME: DC1605B_Rev1
				SHEET 2 OF 13

NOTES: UNLESS OTHERWISE SPECIFIED

1. FAB PER IPC-A-600.
2. MATERIAL: EPOXY FIBERGLASS, NEMA GRADE FR-4
FINISHED THICKNESS TO BE 0.062" +/- 0.005"
4-LAYER BOARD, 2 OZ. CU ON OUTER LAYERS,
1 OZ. CU ON INNER LAYERS,
FLAMMABILITY RATING: 94 V-2 MINIMUM.
3. SIZE: CUT TO DIMENSIONS AND TOLERANCES SHOWN.
0.00" ARE PRIMARY DATUMS.
4. FINISH: SMOBC USING LPI BOTH SIDES, COLOR BLACK.
ENIG FINISH. LEAD FREE SOLDER CAN BE USED
FOR PROTOTYPE BOARDS.
HIGH DEFINITION WHITE SILKSCREEN.

5. DRILL: PLATE THRU ALL HOLES WITH COPPER, 0.001"
THICK MIN. ALL HOLES SHALL BE DRILLED
+/- 0.003" WITH RESPECT TO CTR. OF DRILLED
PAD. ALL HOLES FINISHED SIZE AFTER PLATING.
6. DROP ALL UNUSED PADS ON INNER LAYERS.
7. DO NOT ALTER ARTWORK e.g. TO ADD LOGO OR DATE CODE.
PAD SIZE CAN BE MODIFIED TO MEET END FINISH.
8. PCBs ARE TO BE RoHS COMPLIANT.
9. SCORING FOR PANELIZED PCB:

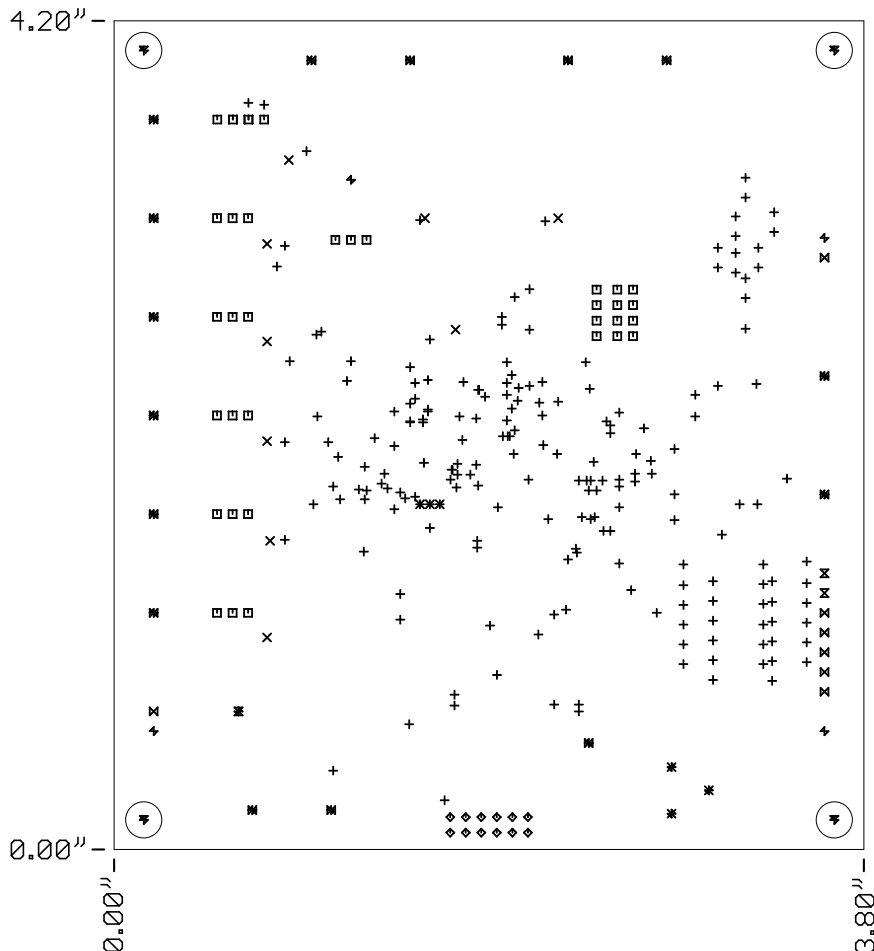


REVISION HISTORY

ECO	REV	DESCRIPTION	APPROVED	DATE
-	1	PRODUCTION	MIKE P.	09/19/2014

DRILL TABLE

Sym	Nº	Mils	MM	Qty	Plated
+	1	10	0.25	159	YES
x	2	15	0.38	1	YES
□	3	31	0.80	29	YES
◇	4	36	0.91	12	YES
×	5	39	1.00	2	YES
⊠	6	40	1.02	4	YES
+	7	67	1.70	1	YES
+	8	96	2.44	19	YES
x	9	110	2.80	2	YES
×	10	126	3.20	1	YES
▽	11	183	4.65	4	NOT

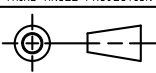


LAYER STRUCTURE

	TOP	
0.0027"	[Layer 1: TOP]	LAYER 1- TOP
0.009"	[Layer 2: PREPREG]	PREPREG
0.00135"	[Layer 3: LAYER 2 - GND]	LAYER 2 - GND
0.0359"	[Layer 4: CORE]	CORE
0.00135"	[Layer 5: LAYER 3 - PWR]	LAYER 3 - PWR
0.009"	[Layer 6: PREPREG]	PREPREG
0.0027"	[Layer 7: BOTTOM]	LAYER 4 - BOTTOM
	BOTTOM	

UNLESS OTHERWISE SPECIFIED
DIMENSIONS ARE IN INCHES
TOLERANCES ON ANGLE +/- 1°
0.XX" = +/- 0.01"
0.XXX" = +/- 0.005"
INTERPRET DIM AND TOL
PER ASME Y14.5M-1994

THIRD ANGLE PROJECTION



DO NOT SCALE DRAWING

APPROVALS

	NAME	DATE
PCB DES.	R.S.	09-19-14
ENG	MIKE P.	09-19-14



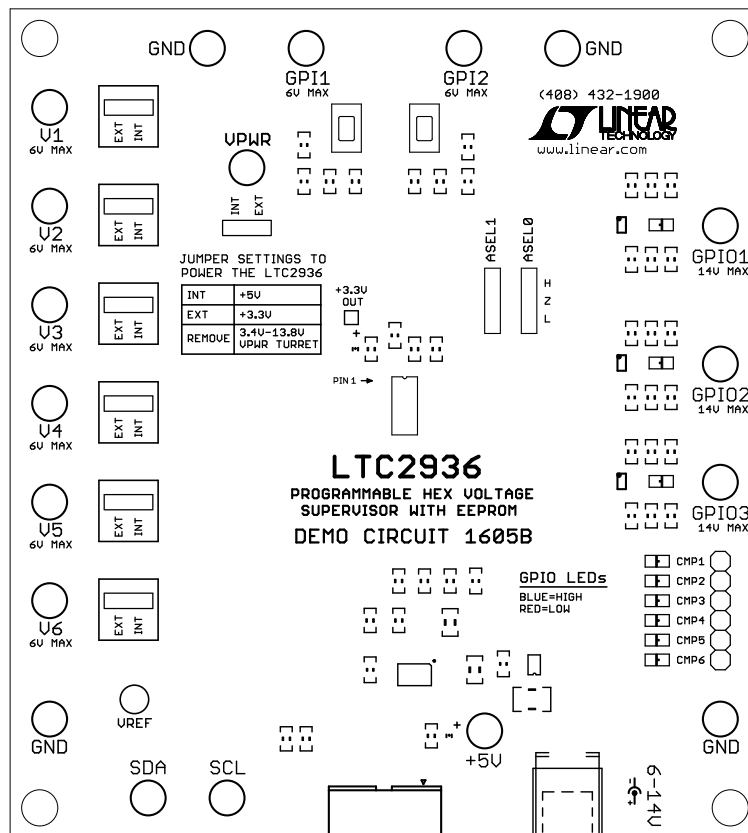
1630 MCCARTHY BLVD.
MILPITAS, CA 95033
PH: (408) 432-1900
LTC CONFIDENTIAL
FOR CUSTOMER USE ONLY

TITLE: FABRICATION DRAWING
LTC2936 PROGRAMMABLE HEX VOLTAGE
SUPERVISOR WITH EEPROM

SIZE N/A	IC NO. LTC2936 DEMO CIRCUIT 1605B	REV 1
-------------	---	----------

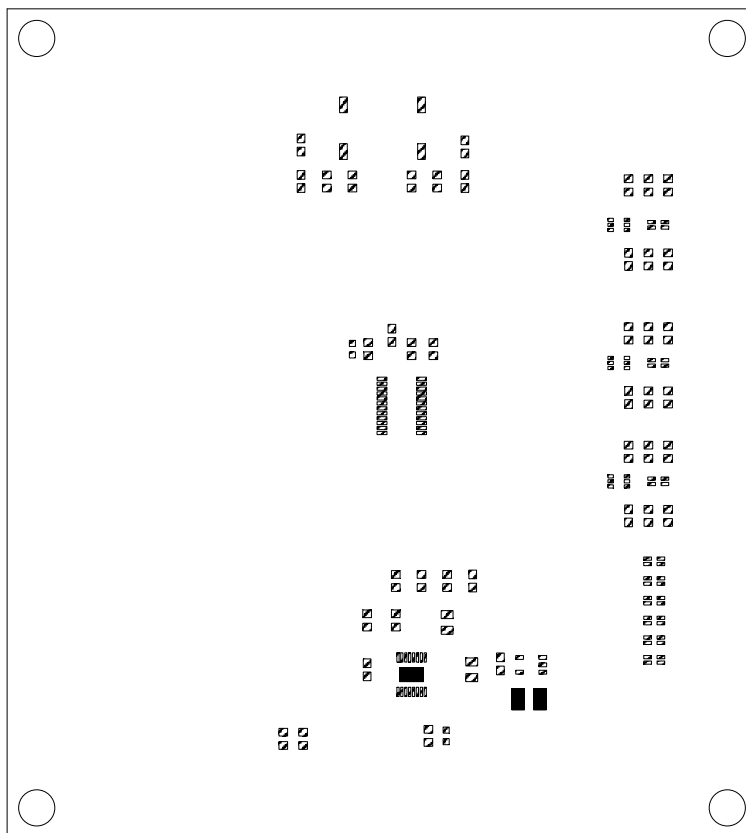
FILENAME: DC1605B_Rev1 SHEET 3 OF 13


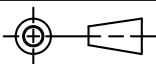
REVISION HISTORY				
ECO	REV	DESCRIPTION	APPROVED	DATE
-	1	PRODUCTION	MIKE P.	09/19/2014



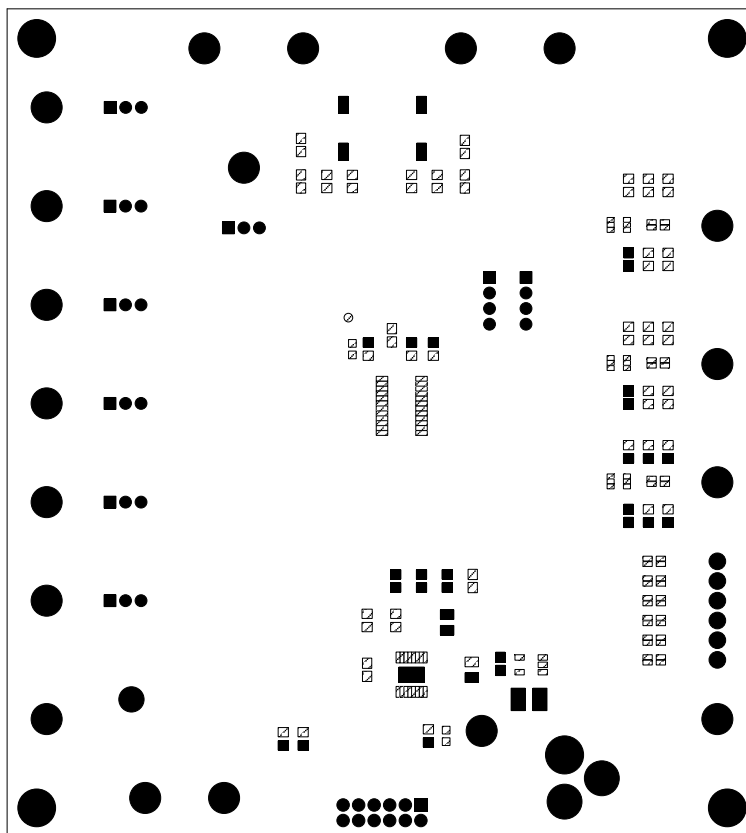
UNLESS OTHERWISE SPECIFIED DIMENSIONS ARE IN INCHES TOLERANCES ON ANGLE $\pm 1^\circ$ $0.XX^\circ = \pm 0.01^\circ$ $0.XXX^\circ = \pm 0.005^\circ$ INTERPRET DIM AND TOL PER ASME Y14.5M-1994	APPROVALS			1630 MCCARTHY BLVD. MILPITAS, CA 95033 PH: (408) 432-1900 LTC CONFIDENTIAL FOR CUSTOMER USE ONLY
	NAME	DATE		
	PCB DES.	R.S.	09-19-14	
	ENG	MIKE P.	09-19-14	
THIRD ANGLE PROJECTION				TITLE: TOP SILKSCREEN LTC2936 PROGRAMMABLE HEX VOLTAGE SUPERVISOR WITH EEPROM
DO NOT SCALE DRAWING	SCALE: NONE			
	SIZE	IC NO.	REV	
	N/A	LTC2936 DEMO CIRCUIT 1605B	1	
	FILENAME: DC1605B_Rev1			
				SHEET 4 OF 13


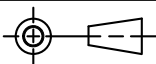
REVISION HISTORY				
ECO	REV	DESCRIPTION	APPROVED	DATE
-	1	PRODUCTION	MIKE P.	09/19/2014



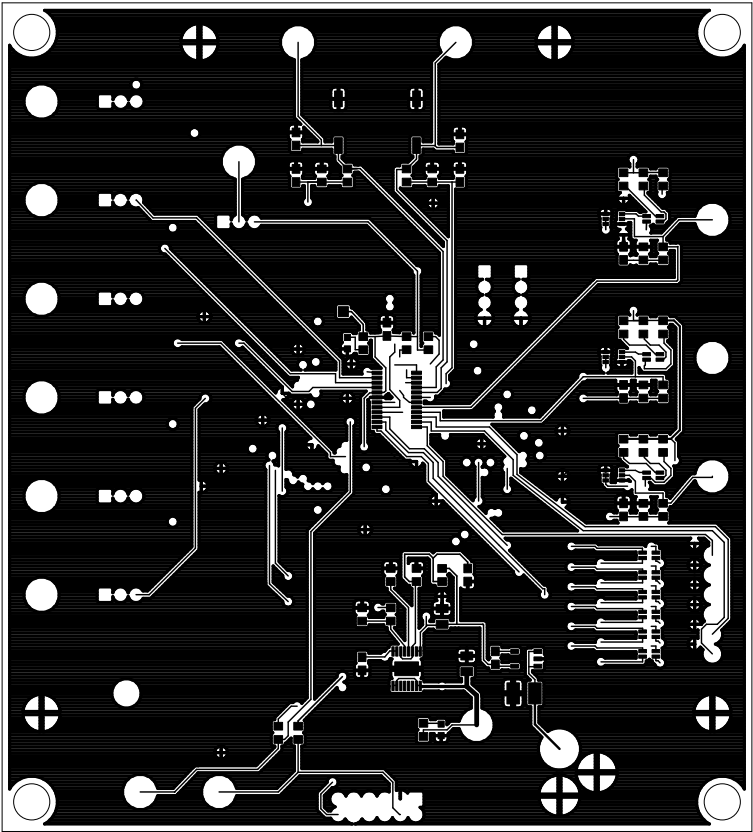
UNLESS OTHERWISE SPECIFIED DIMENSIONS ARE IN INCHES TOLERANCES ON ANGLE +/- 1° 0.XX" = +/- 0.01" 0.XXX" = +/- 0.005" INTERPRET DIM AND TOL PER ASME Y14.5M-1994		APPROVALS		 1630 MCCARTHY BLVD. MILPITAS, CA 95033 PH: (408) 432-1900 LTC CONFIDENTIAL FOR CUSTOMER USE ONLY		
		PCB DES.	R.S.	09-19-14		
THIRD ANGLE PROJECTION		ENG	MIKE P.	09-19-14	TITLE: TOP PASTE LTC2936 PROGRAMMABLE HEX VOLTAGE SUPERVISOR WITH EEPROM	
						
DO NOT SCALE DRAWING		SCALE: NONE		SIZE N/A	IC NO. LTC2936 DEMO CIRCUIT 1605B	REV 1
FILENAME: DC1605B_Rev1				SHEET 5 OF 13		


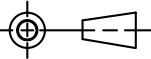
REVISION HISTORY				
ECO	REV	DESCRIPTION	APPROVED	DATE
-	1	PRODUCTION	MIKE P.	09/19/2014



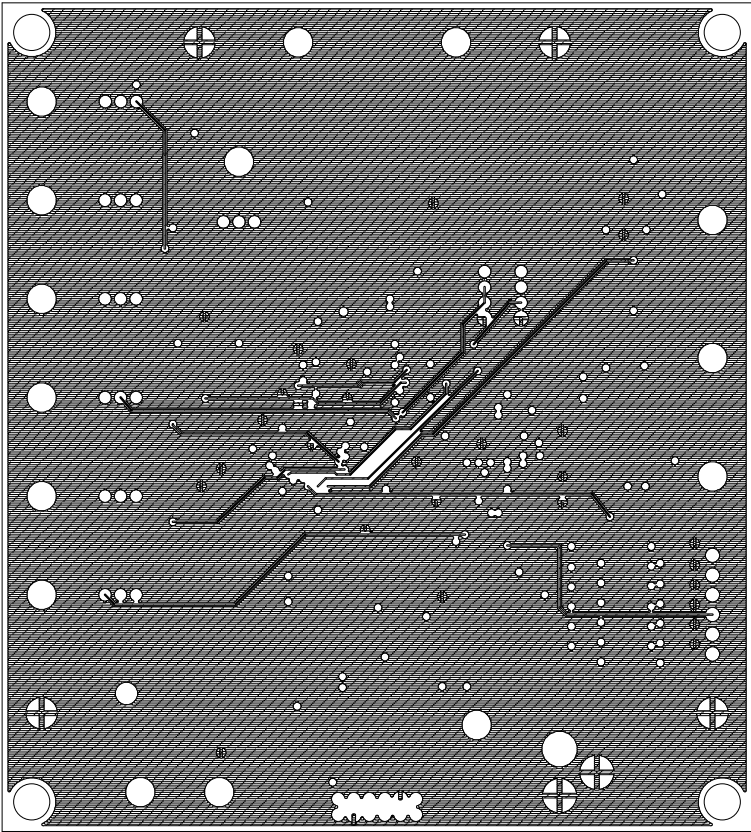
UNLESS OTHERWISE SPECIFIED DIMENSIONS ARE IN INCHES TOLERANCES ON ANGLE +/- 1° 0.XX" = +/- 0.01" 0.XXX" = +/- 0.005" INTERPRET DIM AND TOL PER ASME Y14.5M-1994		APPROVALS			 1630 MCCARTHY BLVD. MILPITAS, CA 95033 PH: (408) 432-1900 LTC CONFIDENTIAL FOR CUSTOMER USE ONLY
		PCB DES.	R.S.	09-19-14	
		ENG	MIKE P.	09-19-14	
		TITLE: TOP SOLDERMASK LTC2936 PROGRAMMABLE HEX VOLTAGE SUPERVISOR WITH EEPROM			
THIRD ANGLE PROJECTION 		SIZE N/A			IC NO. LTC2936 DEMO CIRCUIT 1605B
DO NOT SCALE DRAWING		SCALE: NONE			REV 1
		FILENAME: DC1605B_Rev1			SHEET 6 OF 13


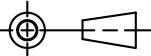
REVISION HISTORY				
ECO	REV	DESCRIPTION	APPROVED	DATE
-	1	PRODUCTION	MIKE P.	09/19/2014



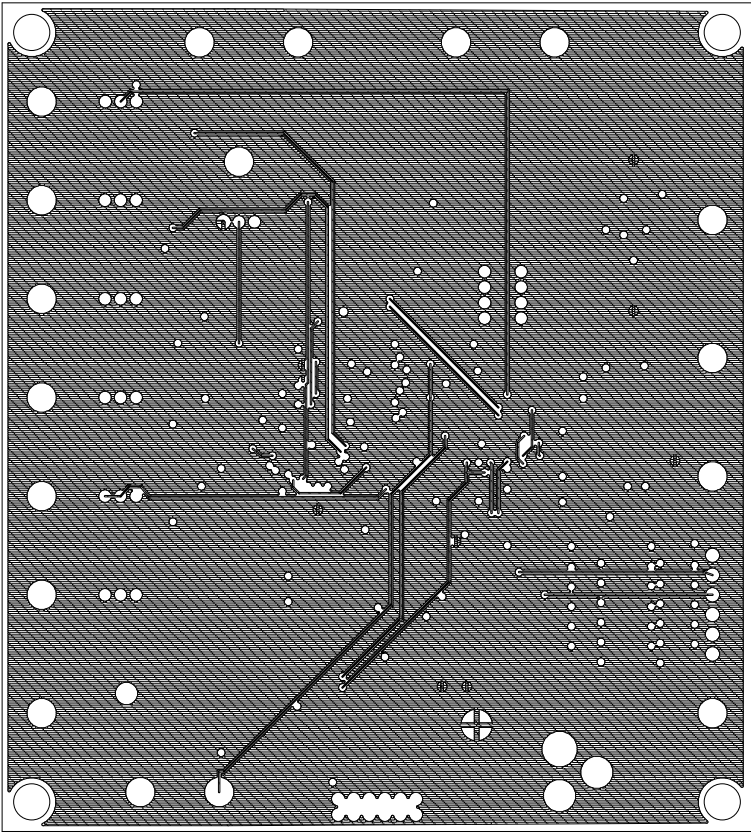
UNLESS OTHERWISE SPECIFIED DIMENSIONS ARE IN INCHES TOLERANCES ON ANGLE +/- 1° 0.XX" = +/- 0.01" 0.XXX" = +/- 0.005" INTERPRET DIM AND TOL PER ASME Y14.5M-1994	APPROVALS			 1630 MCCARTHY BLVD. MILPITAS, CA 95033 PH: (408) 432-1900 LTC CONFIDENTIAL FOR CUSTOMER USE ONLY
	PCB DES.	R.S.	09-19-14	
	ENG	MIKE P.	09-19-14	
	THIRD ANGLE PROJECTION			
				TITLE: 1 - TOP COPPER (SIGNAL) LTC2936 PROGRAMMABLE HEX VOLTAGE SUPERVISOR WITH EEPROM
DO NOT SCALE DRAWING	SCALE: NONE			SIZE N/A
				IC NO. LTC2936 DEMO CIRCUIT 1605B
				REV 1
				FILENAME: DC1605B_Rev1
				SHEET 7 OF 13


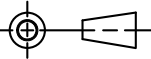
REVISION HISTORY				
ECO	REV	DESCRIPTION	APPROVED	DATE
-	1	PRODUCTION	MIKE P.	09/19/2014



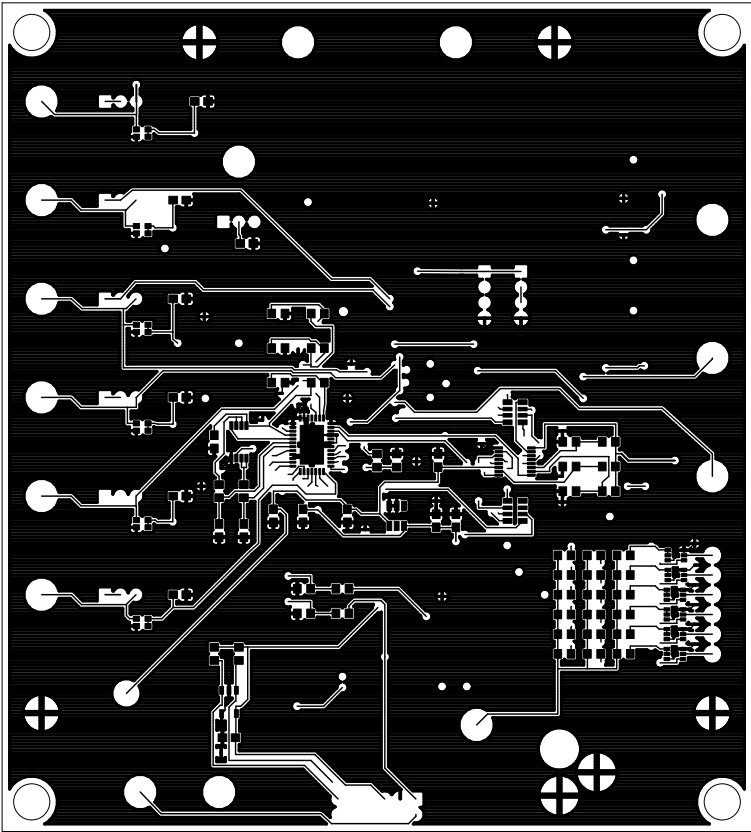
UNLESS OTHERWISE SPECIFIED DIMENSIONS ARE IN INCHES TOLERANCES ON ANGLE +/- 1° 0.XX" = +/- 0.01" 0.XXX" = +/- 0.005" INTERPRET DIM AND TOL PER ASME Y14.5M-1994	APPROVALS			 1630 MCCARTHY BLVD. MILPITAS, CA 95033 PH: (408) 432-1900 LTC CONFIDENTIAL FOR CUSTOMER USE ONLY		
	PCB DES.	R.S.	09-19-14			
	ENG	MIKE P.	09-19-14			
	TITLE: 2 - INNER COPPER (GND) LTC2936 PROGRAMMABLE HEX VOLTAGE SUPERVISOR WITH EEPROM					
THIRD ANGLE PROJECTION				SIZE N/A	IC NO. LTC2936 DEMO CIRCUIT 1605B	REV 1
DO NOT SCALE DRAWING	SCALE: NONE			FILENAME: DC1605B_Rev1		SHEET 8 OF 13


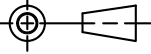
REVISION HISTORY				
ECO	REV	DESCRIPTION	APPROVED	DATE
-	1	PRODUCTION	MIKE P.	09/19/2014



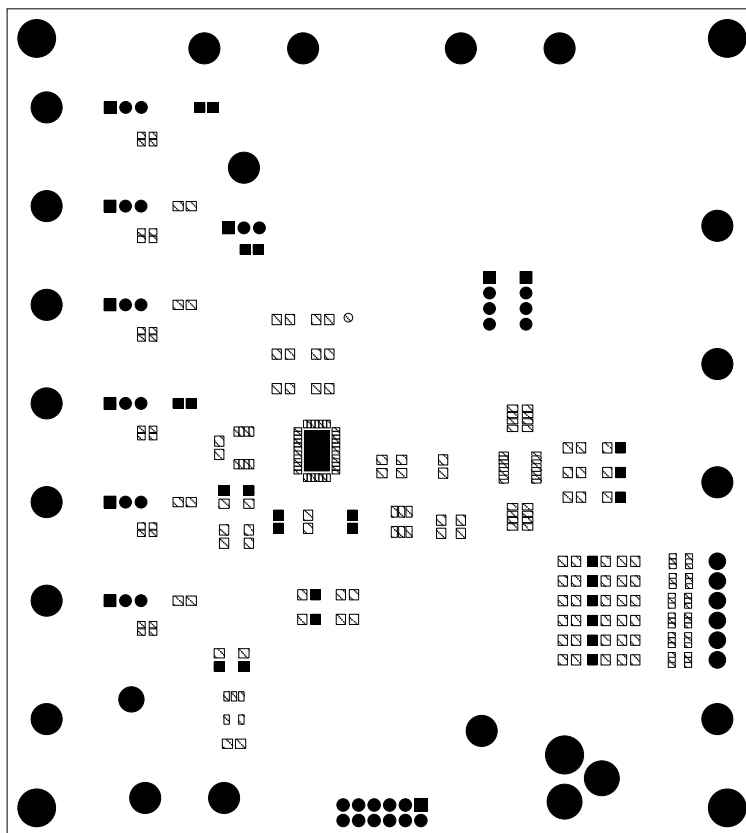
UNLESS OTHERWISE SPECIFIED DIMENSIONS ARE IN INCHES TOLERANCES ON ANGLE +/- 1° 0.XX" = +/- 0.01" 0.XXX" = +/- 0.005" INTERPRET DIM AND TOL PER ASME Y14.5M-1994	APPROVALS			 1630 MCCARTHY BLVD. MILPITAS, CA 95033 PH: (408) 432-1900 LTC CONFIDENTIAL FOR CUSTOMER USE ONLY		
	PCB DES.	R.S.	09-19-14			
	ENG	MIKE P.	09-19-14			
	TITLE: 3 - INNER COPPER (POWER) LTC2936 PROGRAMMABLE HEX VOLTAGE SUPERVISOR WITH EEPROM					
THIRD ANGLE PROJECTION				SIZE N/A	IC NO. LTC2936 DEMO CIRCUIT 1605B	REV 1
DO NOT SCALE DRAWING	SCALE: NONE			FILENAME: DC1605B_Rev1		SHEET 9 OF 13


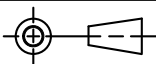
REVISION HISTORY				
ECO	REV	DESCRIPTION	APPROVED	DATE
-	1	PRODUCTION	MIKE P.	09/19/2014



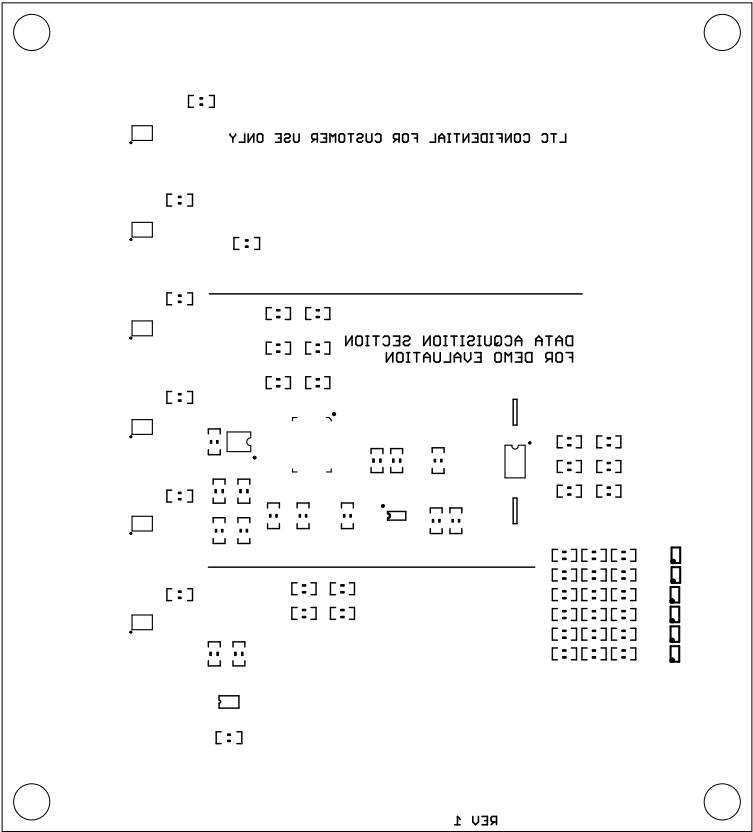
UNLESS OTHERWISE SPECIFIED DIMENSIONS ARE IN INCHES TOLERANCES ON ANGLE +/- 1° 0.XX" = +/- 0.01" 0.XXX" = +/- 0.005" INTERPRET DIM AND TOL PER ASME Y14.5M-1994	APPROVALS		 1630 MCCARTHY BLVD. MILPITAS, CA 95033 PH: (408) 432-1900 LTC CONFIDENTIAL FOR CUSTOMER USE ONLY	
	PCB DES.	R.S.		09-19-14
	ENG	MIKE P.		09-19-14
	THIRD ANGLE PROJECTION			
			TITLE: 4 - BOTTOM COPPER (SIGNAL) LTC2936 PROGRAMMABLE HEX VOLTAGE SUPERVISOR WITH EEPROM	
DO NOT SCALE DRAWING	SCALE: NONE	FILENAME: DC1605B_Rev1	SIZE: N/A IC NO.: LTC2936 DEMO CIRCUIT 1605B	
			REV 1 SHEET 10 OF 13	


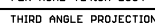
REVISION HISTORY				
ECO	REV	DESCRIPTION	APPROVED	DATE
-	1	PRODUCTION	MIKE P.	09/19/2014



UNLESS OTHERWISE SPECIFIED DIMENSIONS ARE IN INCHES TOLERANCES ON ANGLE $\pm 1^\circ$ $0.XX^\circ = \pm 0.01^\circ$ $0.XXX^\circ = \pm 0.005^\circ$ INTERPRET DIM AND TOL PER ASME Y14.5M-1994		APPROVALS			 1630 MCCARTHY BLVD. MILPITAS, CA 95033 PH: (408) 432-1900 LTC CONFIDENTIAL FOR CUSTOMER USE ONLY
		NAME	DATE		
		PCB DES.	R.S.	09-19-14	
THIRD ANGLE PROJECTION		ENG	MIKE P.	09-19-14	TITLE: BOTTOM SOLDERMASK LTC2936 PROGRAMMABLE HEX VOLTAGE SUPERVISOR WITH EEPROM
					
DO NOT SCALE DRAWING		SCALE: NONE			
		SIZE	IC NO.	REV	
		N/A	LTC2936 DEMO CIRCUIT 1605B	1	
		FILENAME: DC1605B_Rev1			SHEET 12 OF 13

REVISION HISTORY				
ECO	REV	DESCRIPTION	APPROVED	DATE
-	1	PRODUCTION	MIKE P.	09/19/2014



UNLESS OTHERWISE SPECIFIED DIMENSIONS ARE IN INCHES TOLERANCES ON ANGLE +/- 1° 0.XX" = +/- 0.01" 0.XXX" = +/- 0.005" INTERPRET DIM AND TOL PER ASME Y14.5M-1994	APPROVALS			 <div>1630 MCCARTHY BLVD. MILPITAS, CA 95033 PH: (408) 432-1900 LTC CONFIDENTIAL FOR CUSTOMER USE ONLY</div>		
		NAME	DATE			
	PCB DES.	R.S.	09-19-14			
	ENG	MIKE P.	09-19-14			
THIRD ANGLE PROJECTION					TITLE: BOTTOM SILKSCREEN LTC2936 PROGRAMMABLE HEX VOLTAGE SUPERVISOR WITH EEPROM	
						
DO NOT SCALE DRAWING	SCALE: NONE			SIZE N/A	IC NO. LTC2936 DEMO CIRCUIT 1605B	REV 1
FILENAME: DC1605B_Rev1				SHEET 13 OF 13		