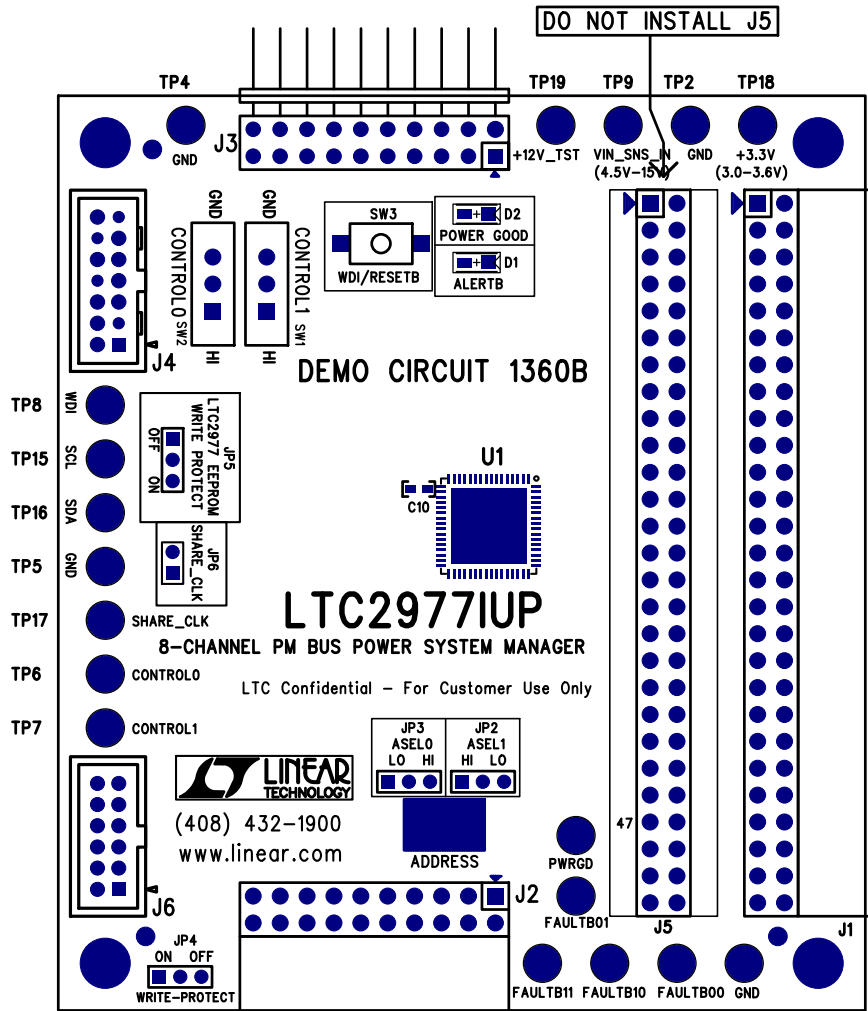
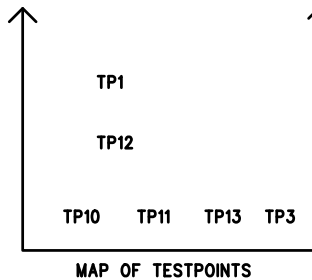


# LINEAR TECHNOLOGY CORPORATION

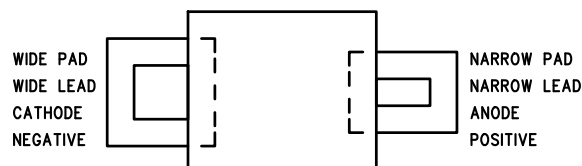
## DC1360B TOP ASSY. DRAWING



DEFAULT JUMPER / SWITCH POSITIONING	
JP2 / ASEL1	= LO
JP3 / ASEL0	= LO
JP4 / WRITE-PROTECT	= ON
JP5 / LTC2978 WRITE-PROTECT	= OFF
JP6 / SHARE_CLK	= INSTALLED
SW1 / CONTROL1	= HI
SW2 / CONTROL0	= HI

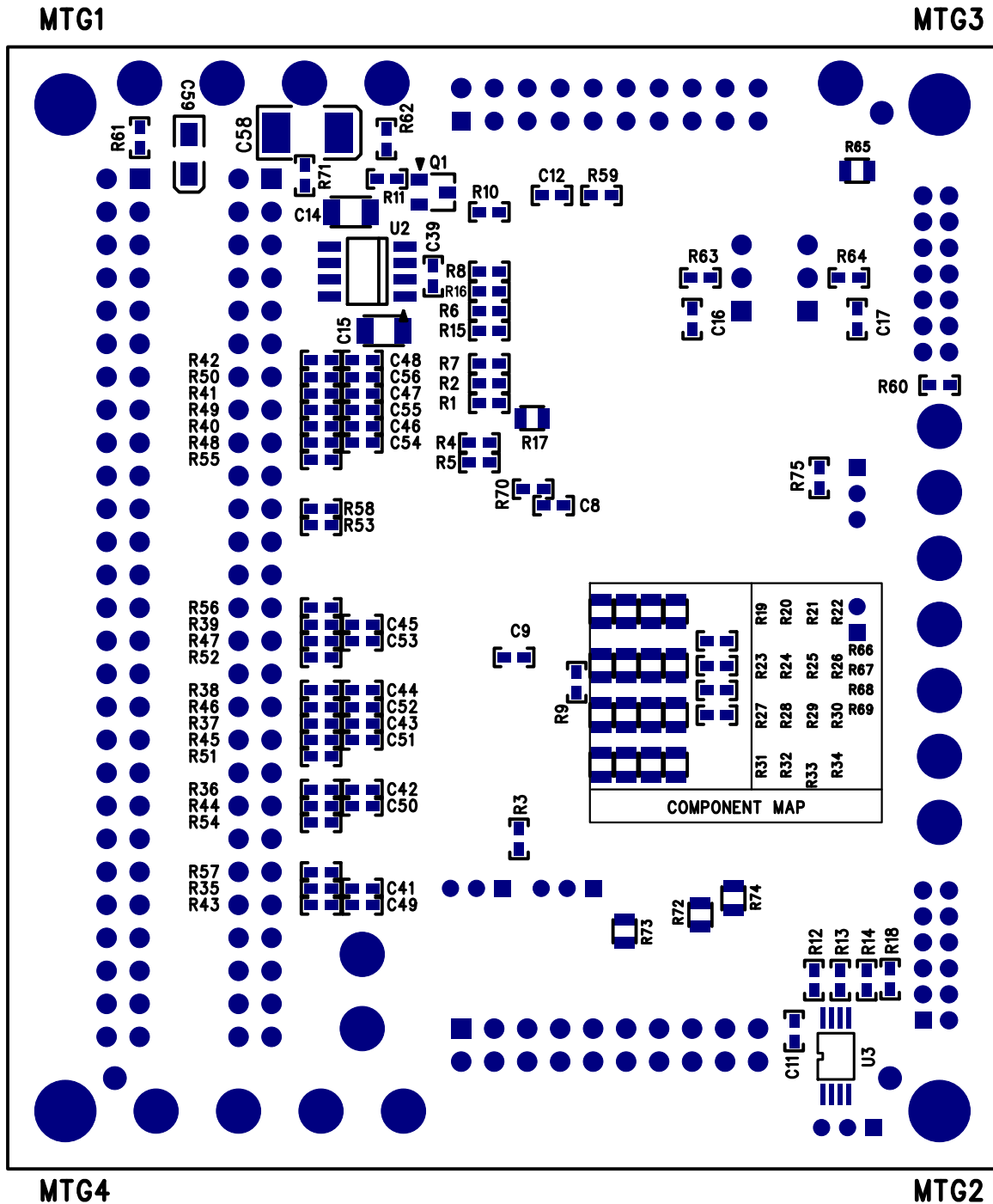


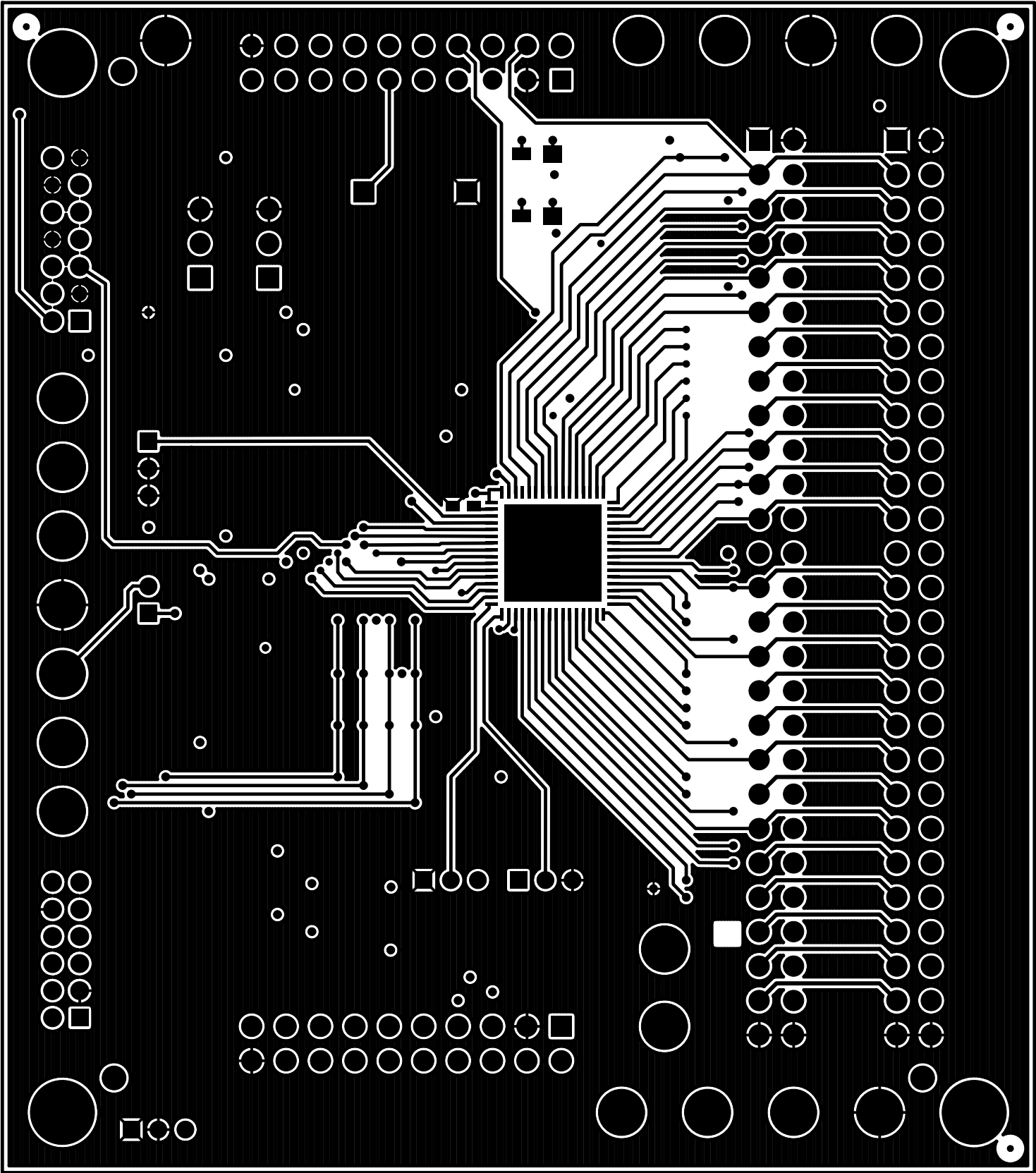
### ORIENTATION FOR LEDs D1 AND D2

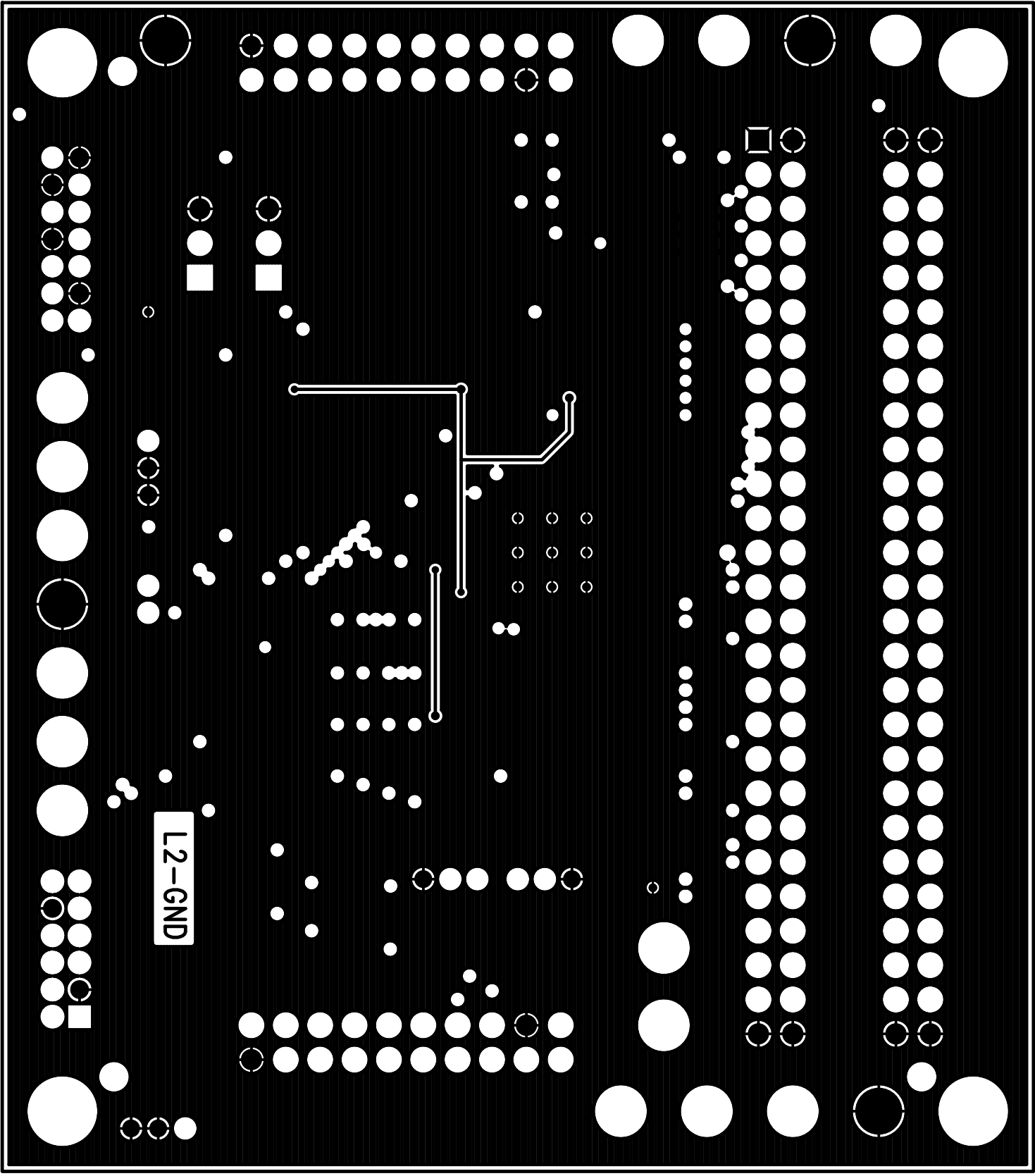


# LINEAR TECHNOLOGY CORPORATION

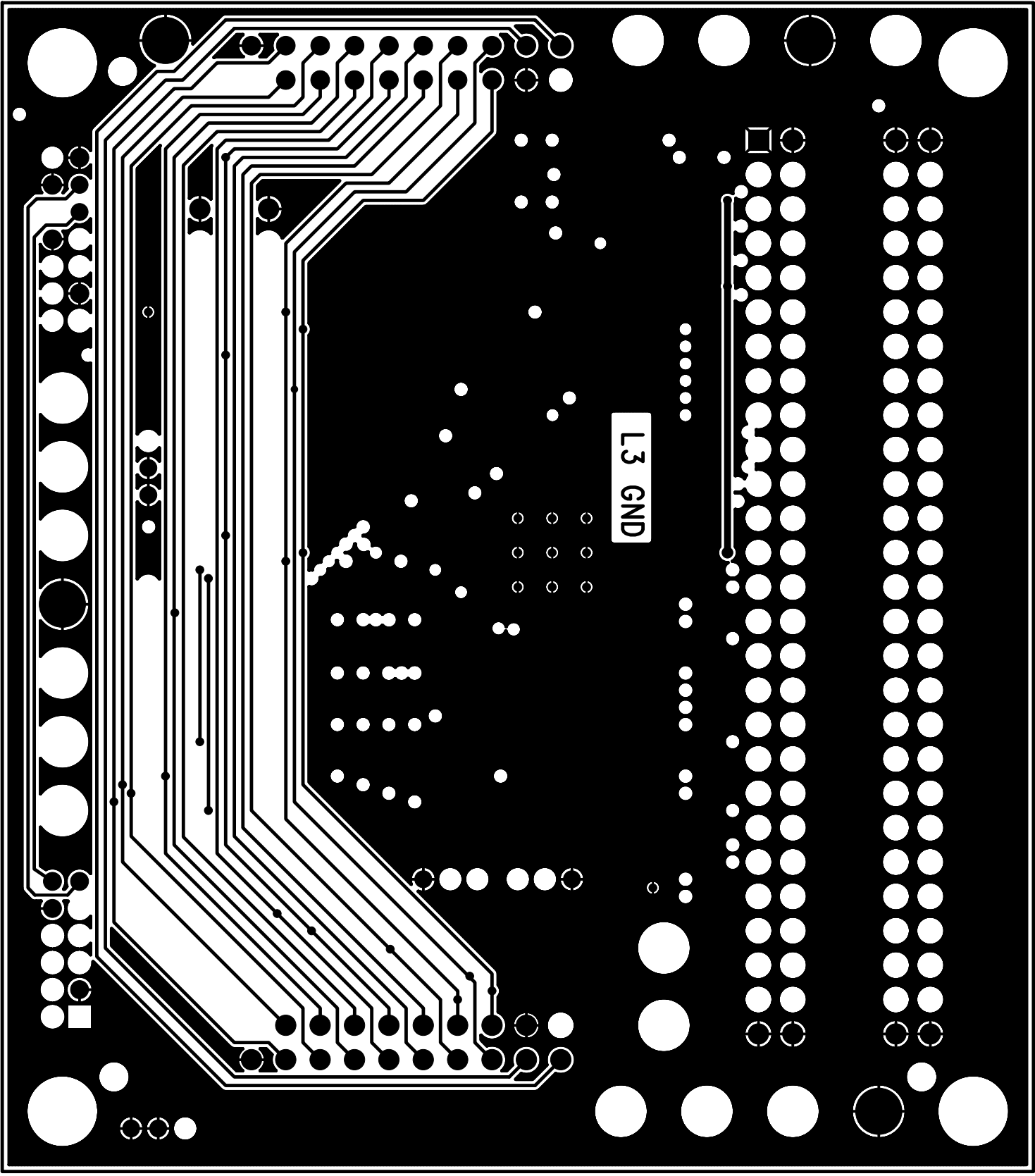
## DC1360B BOTTOM ASSY. DRAWING



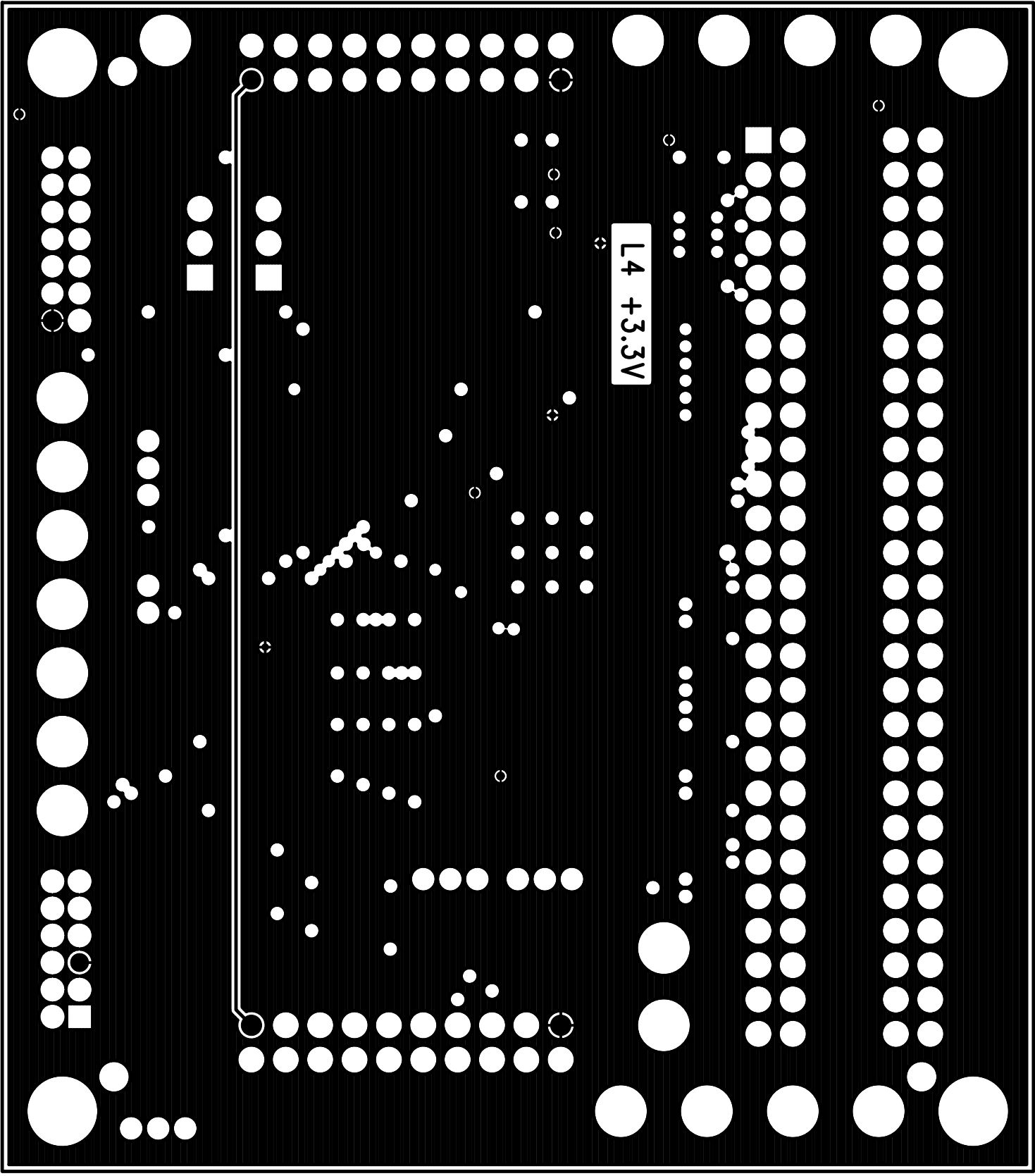




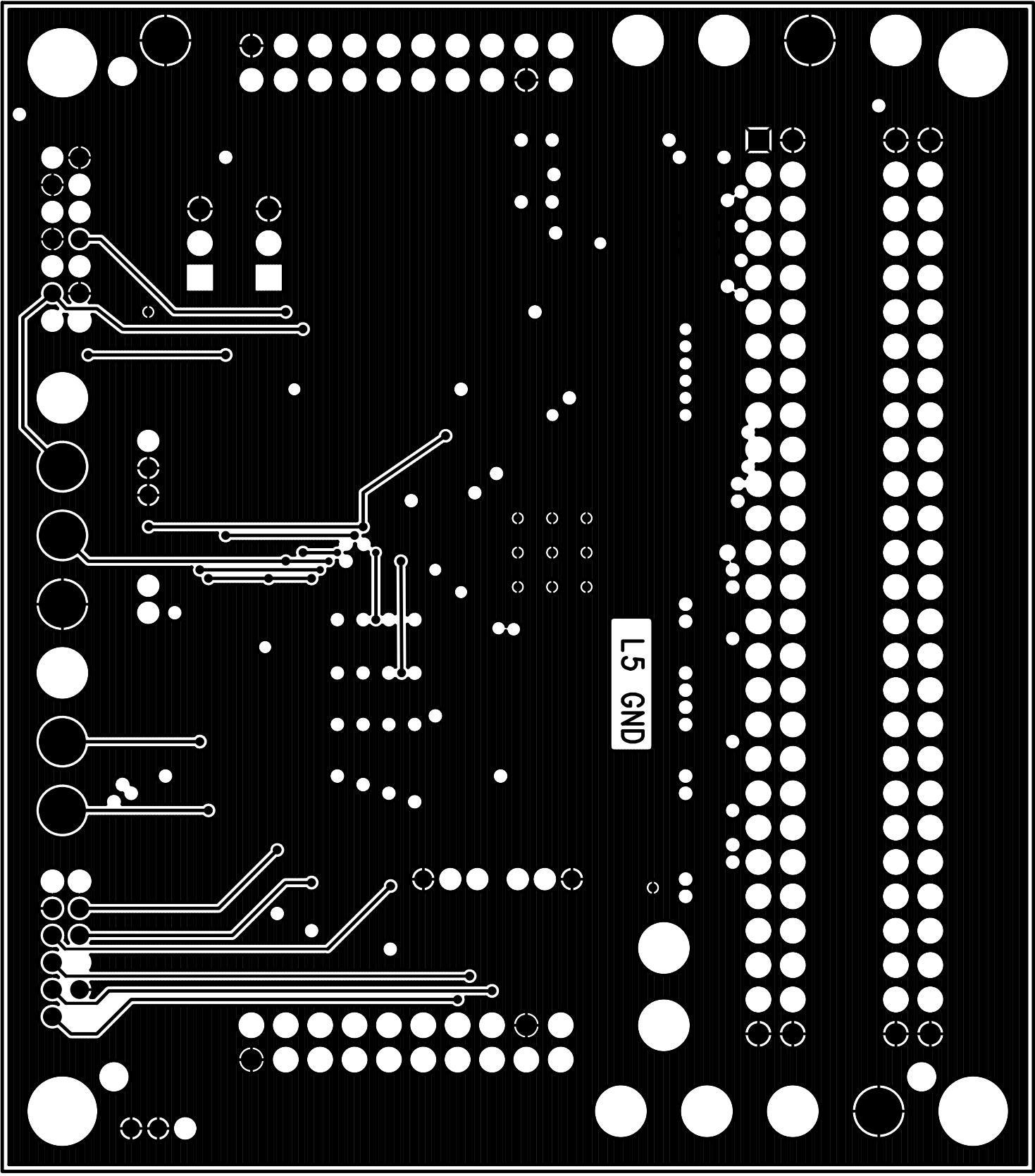
L2-GND



L3 GND



L4 +3.3V



L5 GND

