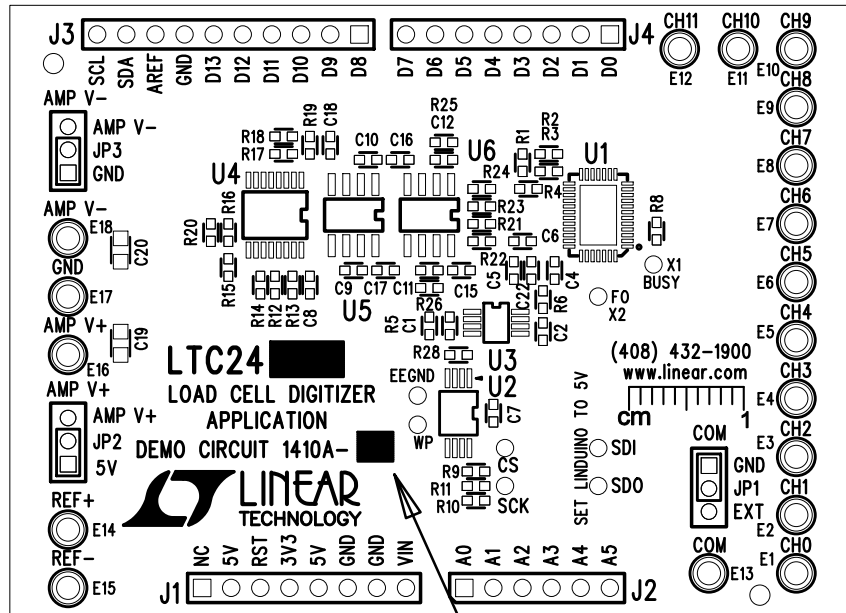


REVISION HISTORY				
ECO	REV	DESCRIPTION	APP. ENG.	DATE
-	3	PRODUCTION	NOE Q.	09-01-16


## NOTES: UNLESS OTHERWISE SPECIFIED



1. WORKMANSHIP SHALL BE IN ACCORDANCE WITH IPC-A-610.
2. ASSEMBLY PROCESS SHALL INCLUDE: REFLOW SOLDER TOP SIDE SMD. MAXIMUM SOLDER TEMPERATURE IS 240 DEGREES CELSIUS.
3. PARTS TO OMIT WILL BE SPECIFIED ON THE BILL OF MATERIALS. LOCATIONS OF OMITTED PARTS SHALL BE FREE OF SOLDER. MASK THE SOLDER STENCIL WHERE SMT PARTS ARE OMITTED.
4. INSTALL SHUNTS AS SHOWN.
5. DEPANELIZE BOARDS AFTER ASSEMBLY AND ROUTE-OUT THE BREAKOUT TABS ON FOUR SIDES OF THE BOARD EDGE.
6. DO NOT APPLY ANY KIND OF ASSEMBLY STAMP OR QA STAMP TO ANY BOARD.
7. MARK EACH SUFFIX AND ASSEMBLY TYPE IN THE WHITE BLOCK AREAS WITH BLACK PERMANENT MARKER AS SHOWN IN TABLE BELOW:

ASSY	U1	SUFFIX
-A	LTC2498	98
-B	LTC2449	49

8. J1-J4 ARE MOUNTED ON THE TOP SIDE. DO NOT CUT J1-J4'S LONG LEGS ON THE BOTTOM SIDE.
- J5 IS MOUNTED ON THE BOTTOM SIDE. DO NOT CUT J5'S LONG LEGS ON THE TOP SIDE.

APPROVALS		 <div> 1630 MCCARTHY BLVD  MILPITAS, CA 95035  PH: (408)432-1900  www.linear.com  LTC CONFIDENTIAL-  FOR CUSTOMER USE ONLY </div>		
PCB DES.	KIM T.			
APP ENG.	NOE Q.			
		TITLE: TOP ASSEMBLY DRAWING		
		LOAD CELL DIGITIZER APPLICATION		
		SIZE N/A	IC NO. LTC2498CUHF-LTC2449CUHF DEMO CIRCUIT 1410A	REV. 3
SCALE = NONE		FILENAME: DC1410A-3.PCB		SHT 1 OF 2