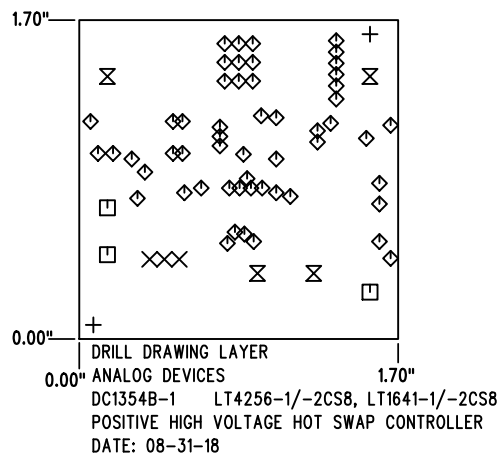


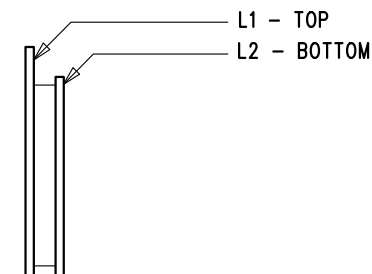
REVISION HISTORY				
ECO	REV	DESCRIPTION	APP. ENG.	DATE
-	1	REBUILD W CHANGE	RITESH L.	08-31-18

SHOWN FROM COMPONENT SIDE



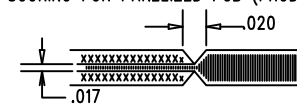
SIZE	QTY	SYM	PLATED	TOL
0.07	2	+	NO	+/-0.003"
0.035	3	X	YES	+/-0.003"
0.064	3	□	YES	+/-0.003"
0.015	54	◇	YES	+/-0.003"
0.094	4	⊗	YES	+/-0.003"

LAYER STRUCTURE



NOTES: UNLESS OTHERWISE SPECIFIED

- FAB PER IPC-A-600.
- MATERIAL: -LEAD FREE ASSEMBLY COMPLIANT, ISOLA FR-370HR
-FINISHED THICKNESS TO BE 0.062" +/- .005"
-TOTAL OF 2 LAYERS WITH 2 OZ. CU ON EACH.
-FLAMMABILITY RATING: 94 V-0 MINIMUM.
- SIZE: CUT TO DIMENSIONS AND TOLERANCES SHOWN.
0.00" ARE PRIMARY DATUMS.
- DRILLING: -DRILL HOLES PER SCHEDULE. PLATE THROUGH HOLES WITH COPPER, 0.001" THICK MIN.
-ALL HOLE SIZES ARE SPECIFIED AFTER PLATING.
-HOLE LOCATION TOLERANCES ARE +/-0.003" IN RELATION TO CENTER
- FINISH: -SMOBC USING LPI BOTH SIDES, COLOR GREEN.
-GOLD IMMERSION BOTH SIDES.
-FOR SILKSCREENS: USE WHITE NON-CONDUCTIVE INK.
- DO NOT ALTER ARTWORK e.g. TO ADD LOGO OR DATE CODE. PAD SIZE CAN BE MODIFIED TO MEET END FINISH.
- PCBS ARE TO BE RoHS COMPLIANT.
- SCORING FOR PANELIZED PCB (PRODUCTION FAB ONLY):



UNLESS OTHERWISE SPECIFIED DIMENSIONS ARE IN INCHES TOLERANCES: 0.XX" = ±0.01" 0.XXX" = ±0.005" INTERPRET DIM AND TOL PER ASME Y14.5M-1994 THIRD ANGLE PROJECTION		APPROVALS PCB DES. KIM T. APP ENG. RITESH L.		ANALOG DEVICES www.analog.com POWER BY LINEAR www.linear.com 1630 MCCARTHY BLVD. MILPITAS, CA 95035 TEL: (408)432-1900	
				TITLE: FABRICATION DRAWING POSITIVE HIGH VOLTAGE HOT SWAP CONTROLLER	
				SIZE N/A	IC NO. LT4256-1/-2CS8, LT1641-1/-2CS8 DEMO CIRCUIT 1354B
				SCALE = NONE	REV. 1
				FILENAME: DC1354B-1.PCB	SHT 1 OF 1