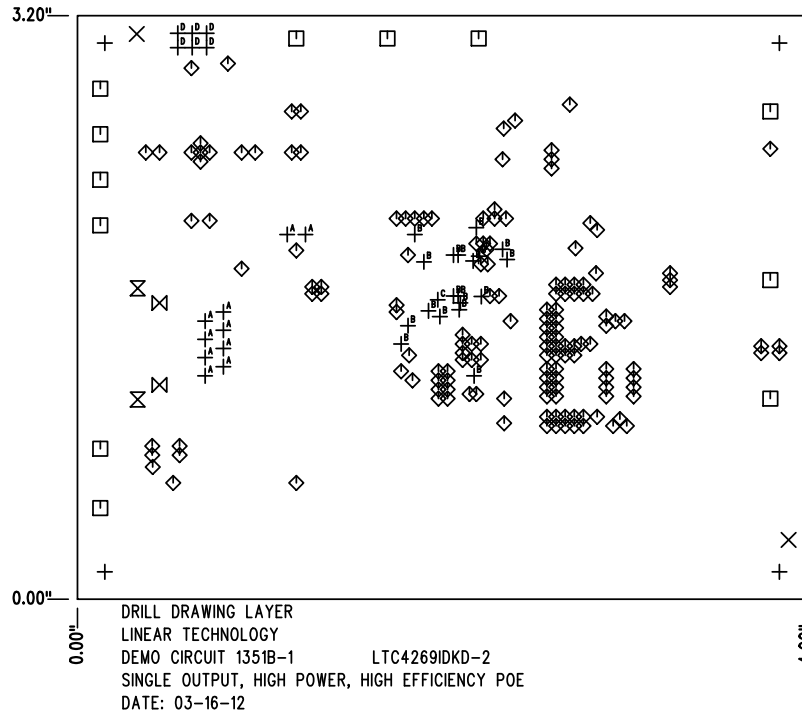
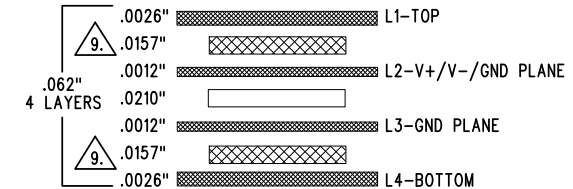


REVISION HISTORY				
ECO	REV	DESCRIPTION	APP. ENG.	DATE
-	1	REBUILD WITH CHANGES	RYAN H.	03-16-12



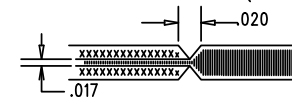
SIZE	QTY	SYM	PLATED	TOL
187	4	+	NO	+/-0.003"
70	2	×	NO	+/-0.003"
94	12	□	YES	+/-0.003"
15	154	◇	YES	+/-0.003"
60	2	⊗	YES	+/-0.003"
125	2	⊗	NO	+/-0.003"
35	10	+ ^A	YES	+/-0.003"
10	19	+ ^B	YES	+/-0.003"
8	1	+ ^C	YES	+/-0.003"
40	6	+ ^D	YES	+/-0.003"

LAYER STRUCTURE




NOTES: UNLESS OTHERWISE SPECIFIED

- FAB PER IPC-A-600.
- MATERIAL: -LEAD FREE ASSEMBLY COMPLIANT, ISOLA FR-370HR OR EQUIVALENT.
 -FINISHED THICKNESS TO BE 0.062" +/- .005"
 -TOTAL OF 4 LAYERS WITH 2 OZ. CU ON THE OUTER LAYERS AND 1 OZ. CU ON THE INNER LAYERS.
 -FLAMMABILITY RATING: 94 V-0 MINIMUM.
- SIZE: CUT TO DIMENSIONS AND TOLERANCES SHOWN.
 0.00" ARE PRIMARY DATUMS.
- DRILLING: -DRILL HOLES PER SCHEDULE. PLATE THROUGH HOLES WITH COPPER, 0.001" THICK MIN.
 -ALL HOLE SIZES ARE SPECIFIED AFTER PLATING.
 -HOLE LOCATION TOLERANCES ARE +/-0.003" IN RELATION TO CENTER
- FINISH: -SMOBC USING LPI BOTH SIDES, COLOR GREEN.
 -GOLD IMMERSION BOTH SIDES.
 -FOR SILKSCREENS: USE WHITE NON-CONDUCTIVE INK.
- DO NOT ALTER ARTWORK e.g. TO ADD LOGO OR DATE CODE.
 PAD SIZE CAN BE MODIFIED TO MEET END FINISH.
- PCBS ARE TO BE RoHS COMPLIANT.
- SCORING FOR PANELIZED PCB (PRODUCTION FAB ONLY):



9. SUBJECT TO CHANGE BY MANUFACTURER, DEPENDING ON DIELECTRIC CONSTANT DEVIATIONS. PLEASE CONSULT LTC.

UNLESS OTHERWISE SPECIFIED		APPROVALS		 1630 MCCARTHY BLVD MILPITAS, CA 95035 PH: (408)432-1900 www.linear.com LTC CONFIDENTIAL- FOR CUSTOMER USE ONLY	
DIMENSIONS ARE IN INCHES TOLERANCES: 0.XX" = ±0.01" 0.XXX" = ±0.005" INTERPRET DIM AND TOL PER ASME Y14.5M-1994 THIRD ANGLE PROJECTION		PCB DES.	KIM T.		
		APP ENG.	RYAN H.	TITLE: FABRICATION DRAWING	
				SINGLE OUTPUT, HIGH POWER, HIGH EFFICIENCY POE	
				SIZE	IC NO.
				N/A	LTC4269IDKD-2
					DEMO CIRCUIT 1351B
		SCALE = NONE		FILENAME: DC1351B-1.PCB	SHT 1 OF 1