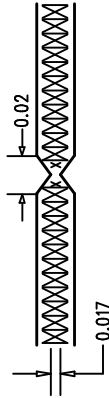

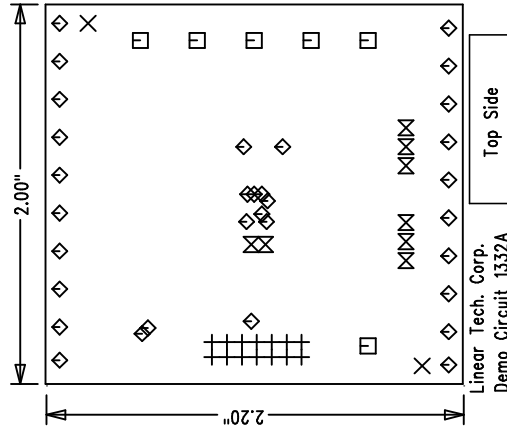


1. FAB PER IPC-A-600.
2. MATERIAL: EPOXY FIBERGLASS, NEMA GRADE FR-4.
 - 2 OZ. COPPER FINISH ON OUTER LAYERS.
 - 1 OZ. COPPER FINISH ON INNER LAYERS.
- THICKNESS .062 +/--.006 TOTAL OF 4 LAYERS.
- FLAMMABILITY RATING: 94 V-0 MINIMUM .
3. SIZE: DIMENSIONS SHOWN AND TOLERANCES TOL: +/--.010
0.000 ARE PRIMARY DATUMS.
4. DRILLING: DRILL HOLES PER SCHEDULE. PLATE THROUGH
HOLES WITH COPPER, .001 INCH THICK MIN. ALL
HOLE SIZES ARE SPECIFIED AFTER PLATING.
- HOLE LOCATION TOLERANCES ARE +/--.003
INCH IN RELATION TO CENTER
5. FINISH: SMOBC USING LPI BOTH SIDES COLOR GREEN.
IMMERSION GOLD PLATING
6. SILKSCREEN : BOTH SIDES USING WHITE NON-CONDUCTIVE EPOXY INK.
7. DO NOT ALTER ARTWORK TO ADD LOGO OR DATE CODE
BUT YOU MAY MODIFY PAD SIZE TO MEET END FINISH.
8. PCBs ARE TO BE RoHS COMPLIANT.
9. SCORING



Fabrication Drawing

UNLESS OTHERWISE SPECIFIED DIMENSIONS ARE IN INCHES TOLERANCES ON ANGLE ± 1 2 PLACE ± .01 3 PLACE ± .005 INTERPRET DIM AND TOL PER ASME Y14.5M - 1994	APPROVALS			 LINEAR TECHNOLOGY 1630 McCarthy Blvd. Milpitas, CA 95035 Phi: (408)432-1900			TITLE: LTC263HTS8-LM12/LZ12/HM12/HZ12 Single 12/10/8-Bit 12C Vout DAC	REV. A
		INIT	DATE					
	DRAWN							
	CHECK							
		DESIGN	Helen	9/13/07				
		ENGR	Leo Chen	9/13/07				
		SCALE = NONE			DES-250			SHEET 1 of 1



SIZE	QTY	SYM	PLATED	TOL
0.07	2	×	NO	+/-0.003
0.095	6	□	YES	+/-0.003
0.01	32	◇	YES	+/-0.003
0.035	8	⋈	YES	+/-0.003
0.03543	14	+	YES	+/-0.003