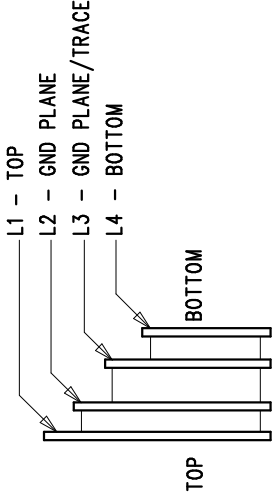
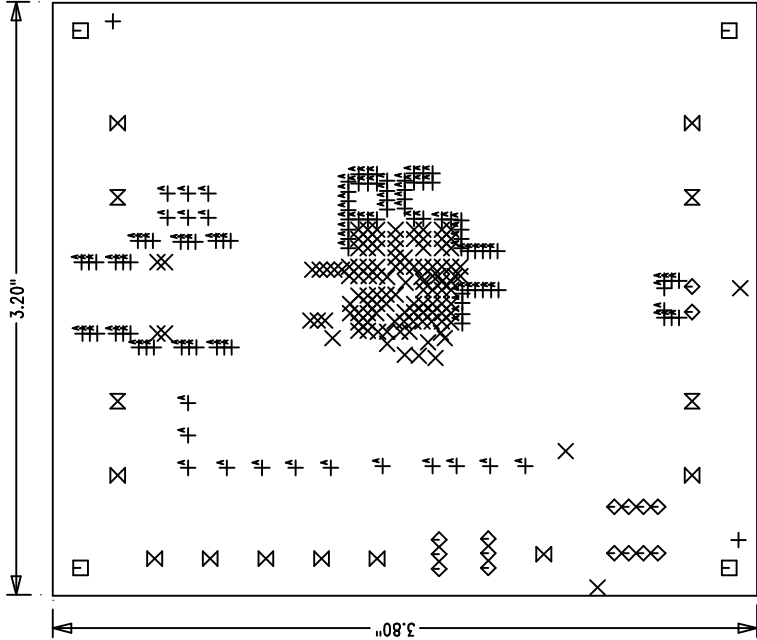
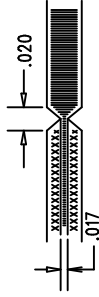


REVISION HISTORY			
ECO	REV	DESCRIPTION	APP. ENG. DATE
1	1	PRODUCTION	SAM Y. 9-28-12



NOTES: UNLESS OTHERWISE SPECIFIED

1. FAB PER IPC-A-600.
2. MATERIAL: -LEAD FREE ASSEMBLY COMPLIANT, ISOLA FR-370HR OR EQUIVALENT.  
-FINISHED THICKNESS TO BE 0.062 +/- .005  
-TOTAL OF 4 LAYERS WITH 2 OZ. CU ON THE OUTER LAYERS AND 1 OZ. CU ON THE INNER LAYERS.  
-FLAMMABILITY RATING: 94 V-0 MINIMUM.
3. SIZE: CUT TO DIMENSIONS AND TOLERANCES SHOWN.  
0.00 ARE PRIMARY DATUMS.
4. DRILLING: -DRILL HOLES PER SCHEDULE. PLATE THROUGH HOLES WITH COPPER, 0.001 THICK MIN.  
-ALL HOLE SIZES ARE SPECIFIED AFTER PLATING.  
-HOLE LOCATION TOLERANCES ARE +/-0.003 IN RELATION TO CENTER
5. FINISH: -SNOBC USING LPI BOTH SIDES, COLOR GREEN.  
-GOLD IMMERSION BOTH SIDES.  
-FOR SILKSCREENS: USE WHITE NON-CONDUCTIVE INK.
6. DO NOT ALTER ARTWORK e.g. TO ADD LOGO OR DATE CODE.  
PAD SIZE CAN BE MODIFIED TO MEET END FINISH.
7. PCBs ARE TO BE RoHS COMPLIANT.
8. SCORING FOR PANELIZED PCB (PRODUCTION FAB ONLY):



SIZE	QTY	SYM	PLATED	TOL
0.07	2	+	NO	+/-0.003
0.01	117	X	YES	+/-0.003
0.187	4	□	NO	+/-0.003
0.035	16	◇	YES	+/-0.003
0.095	10	⊗	YES	+/-0.003
0.205	4	⊗	YES	+/-0.003
0.015	109	⊕	YES	+/-0.003

UNLESS OTHERWISE SPECIFIED  
DIMENSIONS ARE IN INCHES  
TOLERANCES:  
0.XX = ± 0.01  
0.XXX = ± 0.005  
INTERPRET DIM AND TOL  
PER ASME Y14.5M-1994  
THIRD ANGLE PROJECTION

APPROVALS

PCB DES.	HZ
APP ENG.	SAM Y.
SCALE = NONE	

1630 MCCARTHY BLVD  
MILPITAS, CA 95035  
PH: (408) 432-9800  
WWW.LINEARTECH.COM  
LTC CONSUMER LIT  
FOR CUSTOMER USE ONLY

TITLE: FABRICATION DRAWING  
HIGH DENSITY BUCK-BOOST POWER μMODULE®

SIZE	IC NO.	LTM4605EV/LTM4607EV	REV
N/A	DEMO CIRCUIT	198B-A/B	1
FILENAME: DC198B-1.PCB			SHT 1 OF 1