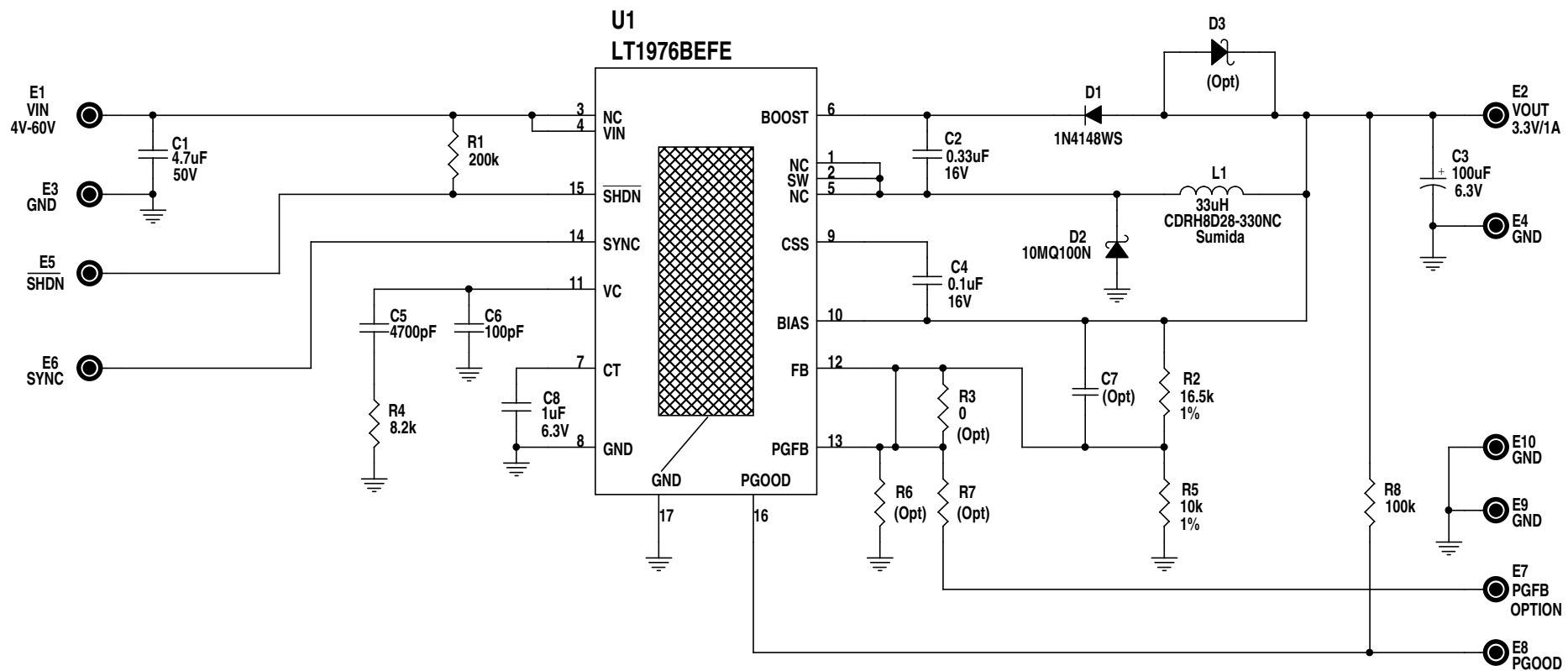


REVISION HISTORY				
ECO	REV	DESCRIPTION	DATE	APPROVED
	0	Rev 0	<DATE>	<APPROVED>
	1	Change D1 from 1N4148WT to 1N4148WS	05/26/06	KSz



This circuit is proprietary to Linear Technology and supplied for use with Linear Technology parts.

Customer Notice: Linear Technology has made a best effort to design a circuit that meets customer-supplied specifications; however, it remains the customers responsibility to verify proper and reliable operation in the actual application. Component substitution and printed circuit board layout may significantly affect circuit performance or reliability. Contact Linear Applications Engineering for assistance.

APPROVALS

DRAWN: Rudy Bautista

ENGINEER: Keith Sz.

APPROVED:

CHECKED:

DCxxxA_00.PCB xxxA_x.DSN

LINEAR TECHNOLOGY CORPORATION
1630 McCARTHY BLVD
MILPITAS, CA. 95035
(408) 432-1900
(408) 434-0507 (FAX)

www.linear.com
LTC Confidential -
For Customer Use Only

Title: High Voltage 1.2A 200kHz Low Ripple Step-Down Regulator

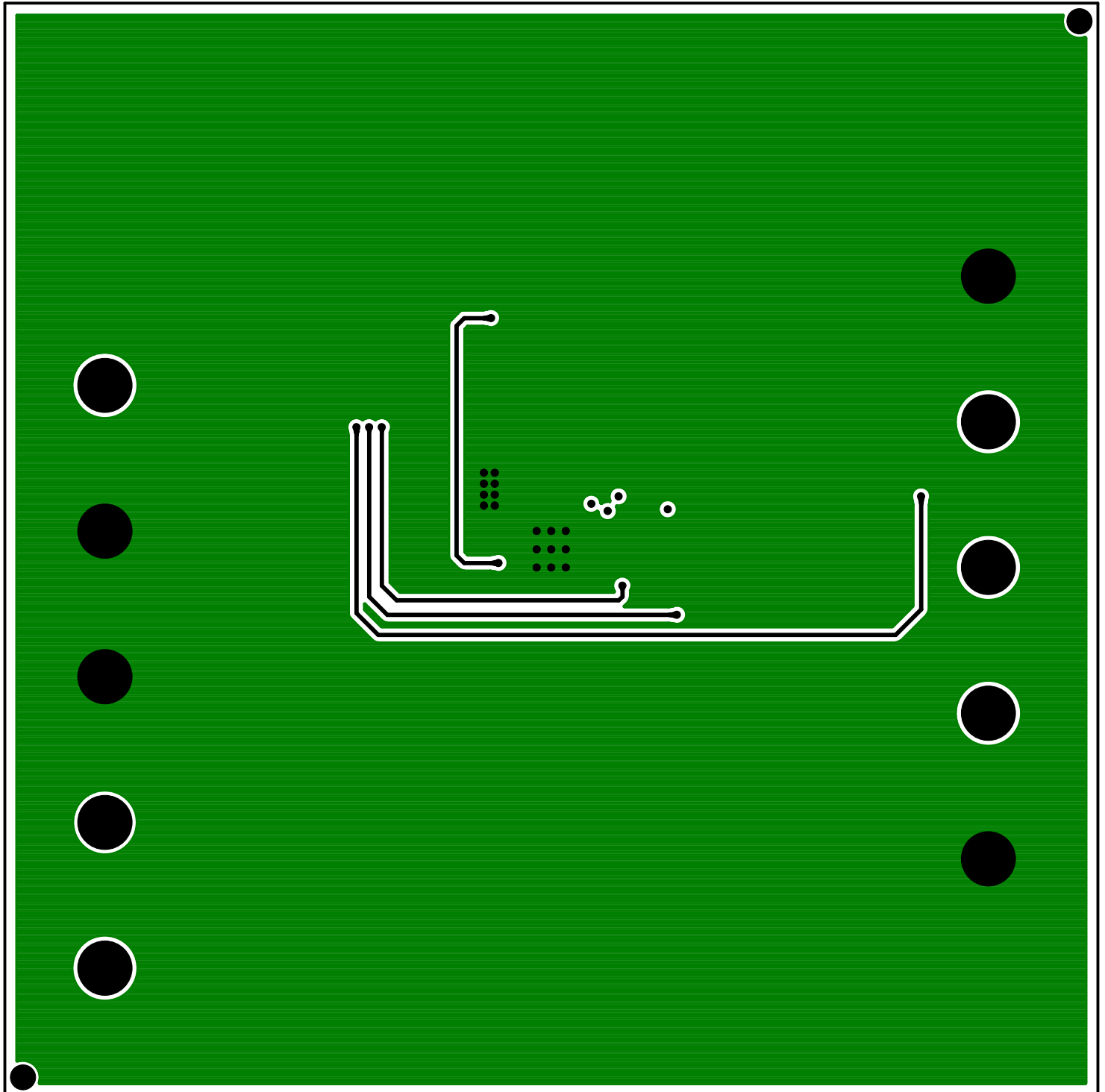
Size: Document Number: Demo Circuit 977A Rev 1

Date: Friday, May 26, 2006 Sheet 1 of 1

LAYER 2 -GND PLANE

LINEAR TECHNOLOGY

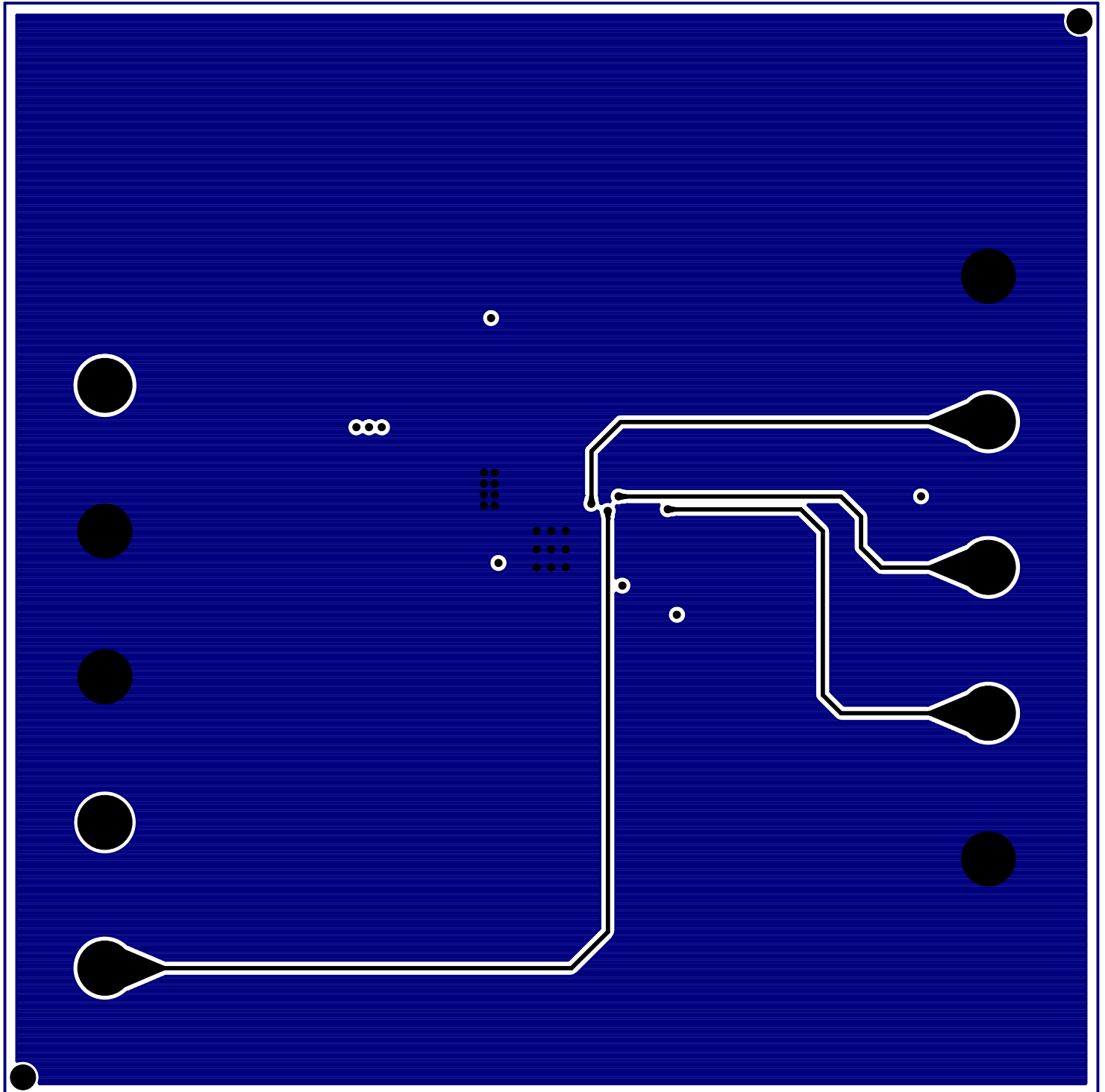
DC977A



LAYER 3 -GND PLANE

LINEAR TECHNOLOGY

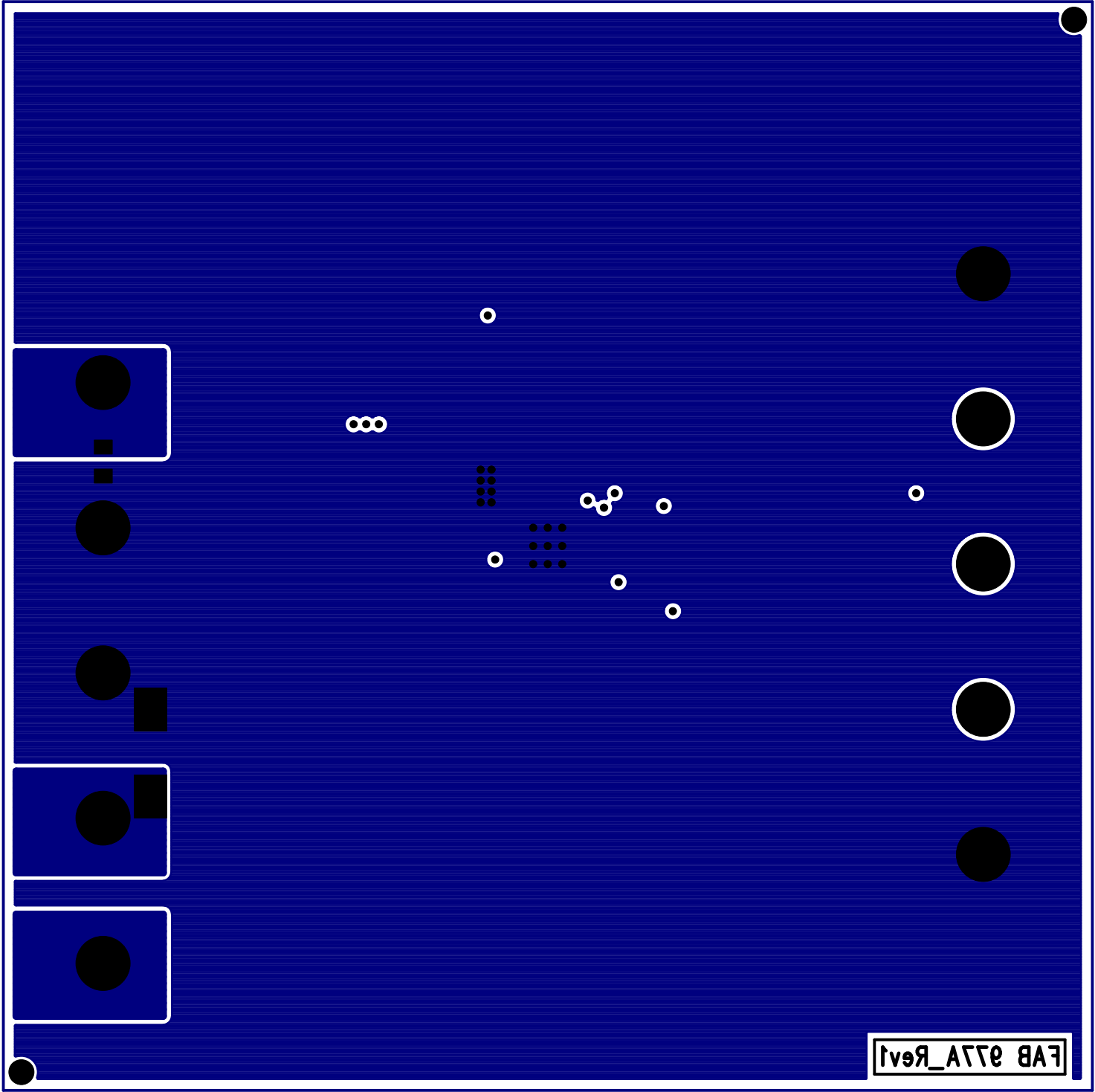
DC977A



LAYER 4 – BOTTOM LAYER

LINEAR TECHNOLOGY

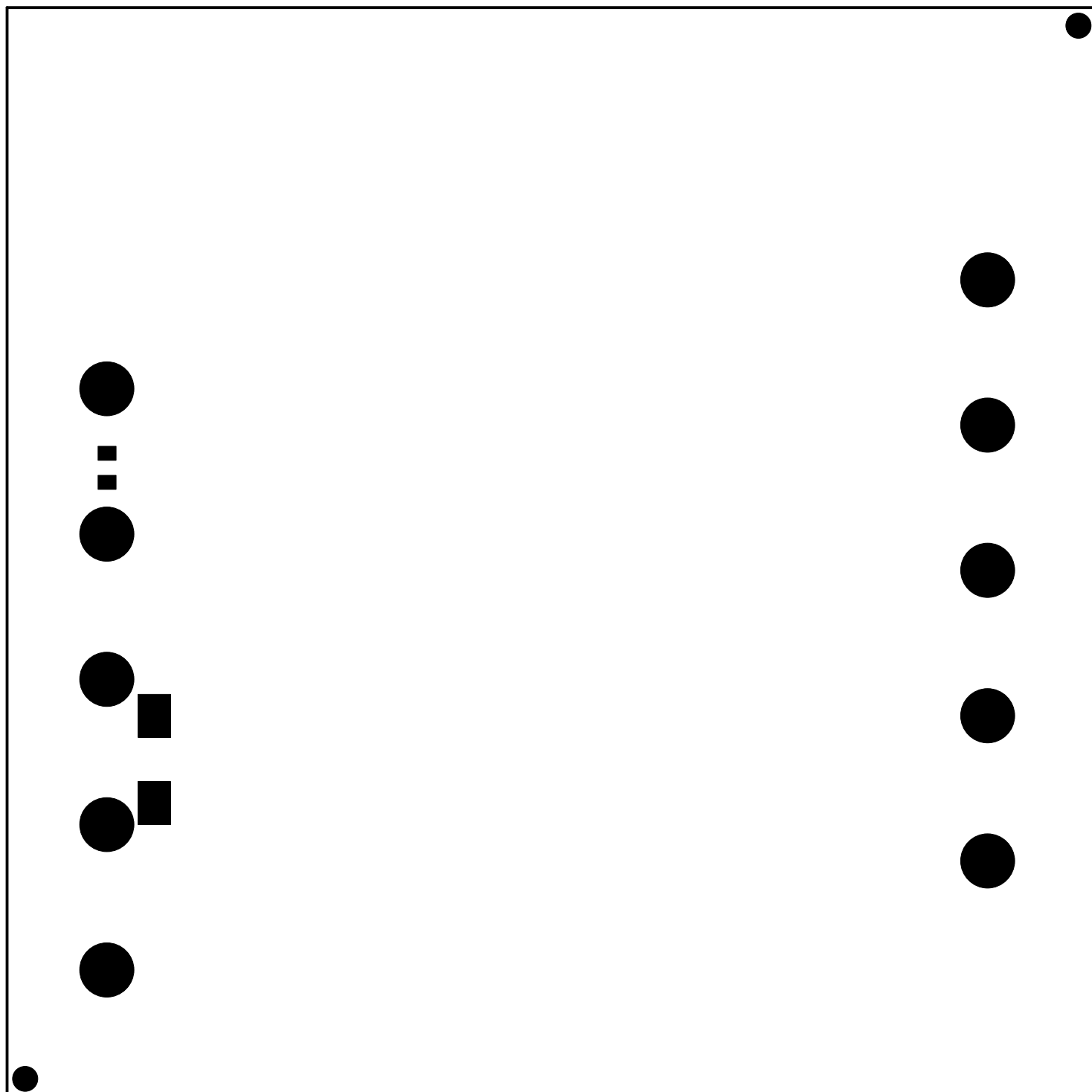
DC977A



BOTTOM SOLDER MASK

LINEAR TECHNOLOGY

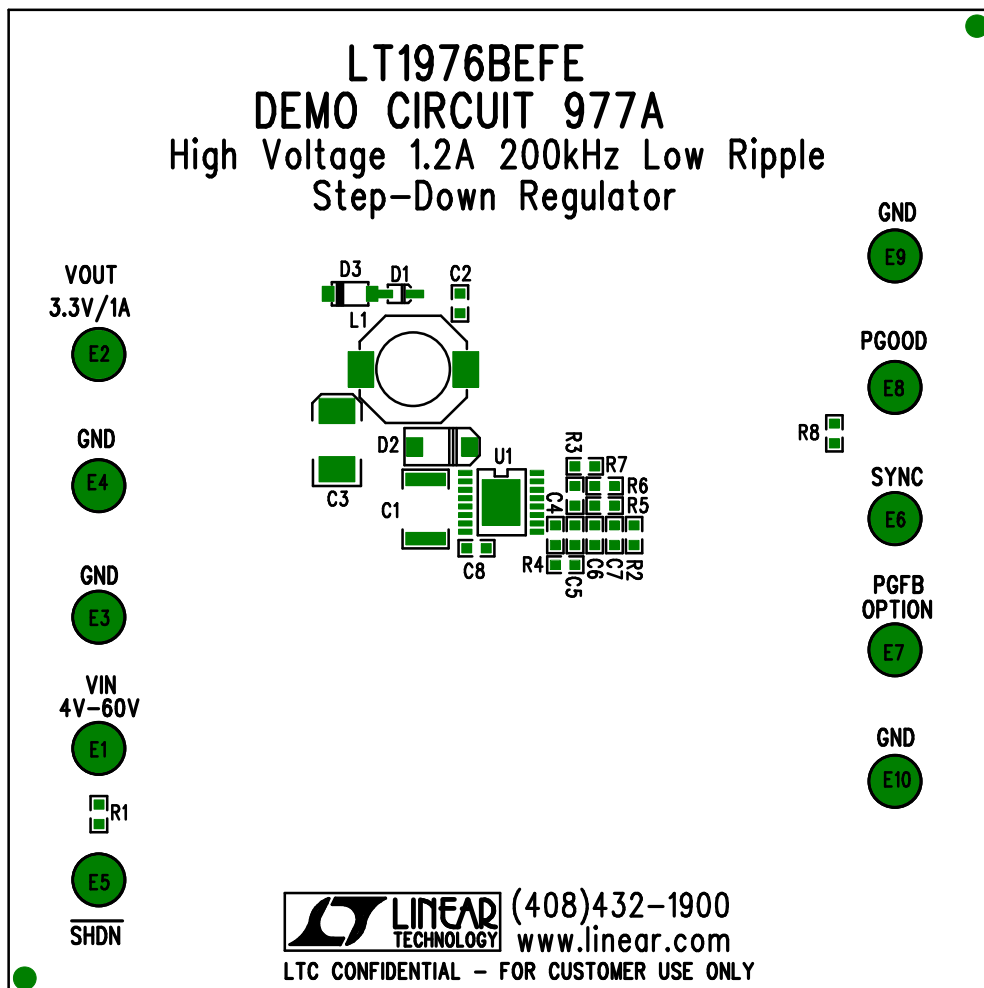
DC977A



TOP SILKSCREEN

LINEAR TECHNOLOGY

DC977A



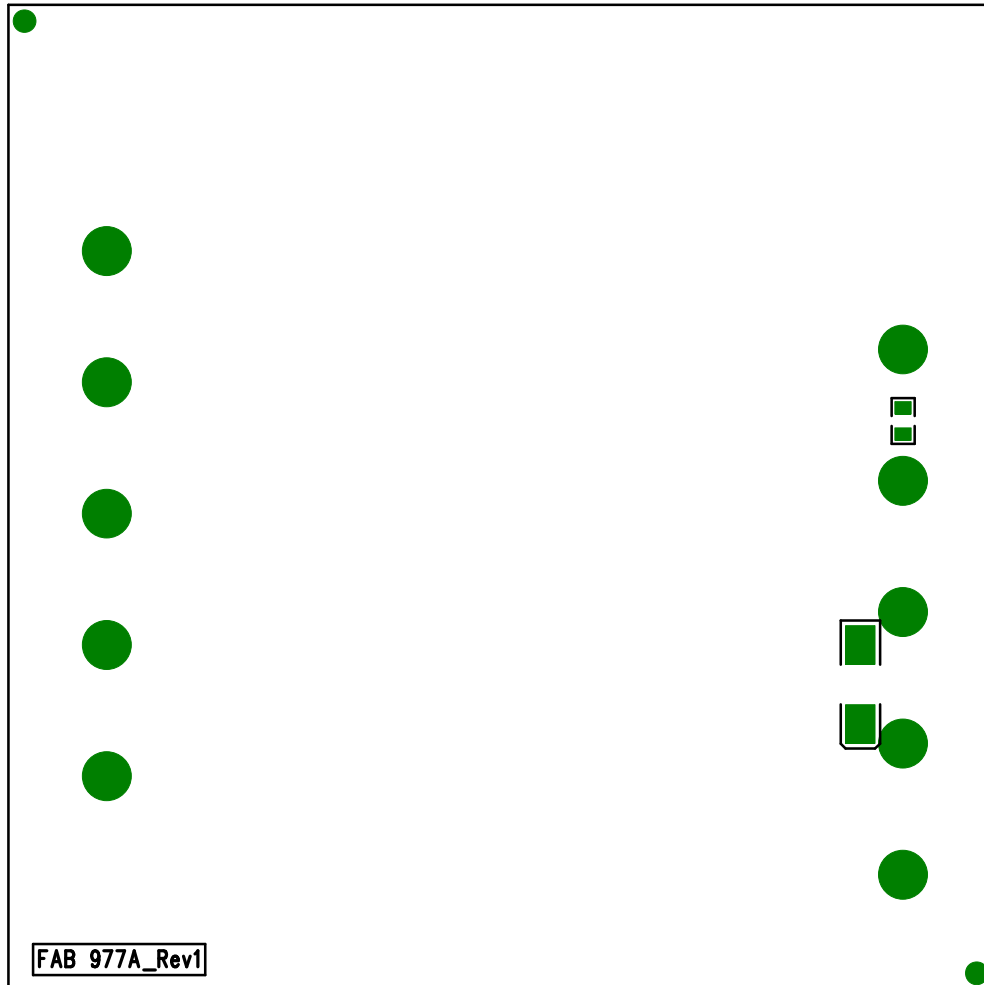
Assembly Top Drawing

APPROVALS			LINEAR TECHNOLOGY		1630 McCarthy Blvd. Milpitas, CA 95035 PH: (408)432-1900	
	INIT	DATE				
DRAWN			TITLE: High Voltage 1.2A 200kHz Low Ripple Step-Down Regulator			
CHECK						
DESIGN	RmB					
ENGR	KSz					
SCALE = NONE			SIZE NONE	DEMO CIRCUIT 977A	REV. 1	SHT 1 of 1
DES-27xxxx						


BOYER SHAW
REYAL MDERO

LINEAR TECHNOLOGY

DC97A



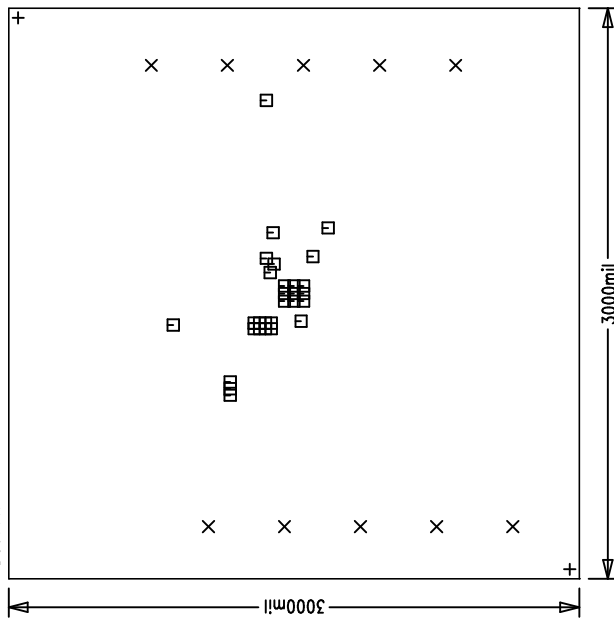
Assembly Bottom Drawing

APPROVALS					1630 McCarthy Blvd. Milpitas, CA 95035 PH: (408)432-1900	
	INIT	DATE				
DRAWN			TITLE: LT1683EG, Low Noise/EMI Switching Power Supply			
CHECK						
DESIGN	RmB					
ENGR						
			SIZE	DEMO CIRCUIT	REV.	
			NONE	477	A	
SCALE = NONE			DES-230567		SHT 2 of 2	

LAYER 1 - TOP LAYER

LINEAR TECHNOLOGY

DC977A



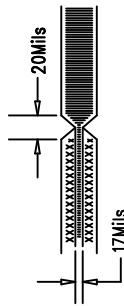
SIZE	QTY	SYM	PLTD	TOL
70	2	+	NO	+/-3mil
94	10	X	YES	+/-3mil
10	29	□	YES	+/-3mil

REVISIONS

REV	APPR	DATE
-----	------	------

NOTES: UNLESS OTHERWISE SPECIFIED

- ARTWORK P/N DC977A REV 1.
- FAB PER IPC-A-600
- MATERIAL: EPOXY FIBERGLASS, NEMA GRADE FR-4
FINISHED THICKNESS TO BE .062 +/- .005 INCH
WITH 2 OZ. COPPER ON TWO OUTER LAYERS AND
1 OZ. COPPER ON TWO INTERNAL LAYERS.
FLAMABILITY RATING: 94 V-0 MINIMUM .
- SIZE: CUT TO DIMENSIONS AND TOLERANCES SHOWN.
0.00 ARE PRIMARY DATUMS.
- DRILLING: DRILL HOLES PER SCHEDULE. PLATE THROUGH
HOLES WITH COPPER, .001 INCH THICK MIN. ALL
HOLE SIZES ARE SPECIFIED AFTER PLATING.
HOLE LOCATION TOLERANCES ARE +/-3mil
INCH IN RELATION TO CENTER
- FINISH: SMOBC USING LPI BOTH SIDES, GREEN PREFERRABLE.
SILKSCREEN COMPONENT SIDE WITH WHITE NON-
CONDUCTIVE INK.
- FILL UP ALL VIAS WITH SOLDER.
- DROP ALL UNUSED PADS ON INNER LAYERS.
- DO NOT ALTER ARTWORK e.g. TO ADD LOGO OR DATE CODE.
- SCORING:



Fabrication Drawing

APPROVALS

DRAWN	INIT	DATE
CHECK		
DESIGN	Rudy B.	
ENGR	Keith S	
SIZE	NONE	
SCALE	= NONE	



TITLE: High Voltage 1.2A 200kHz Low Ripple
Step-Down Regulator

SIZE NONE
Demo Circuit 977A REV. 1

DES-27xxxx SHT 1 of 1

TOP SILKSCREEN

LINEAR TECHNOLOGY

DC977A

LT1976BEFE
DEMO CIRCUIT 977A
High Voltage 1.2A 200kHz Low Ripple
Step-Down Regulator

VOUT
3.3V/1A



GND



GND



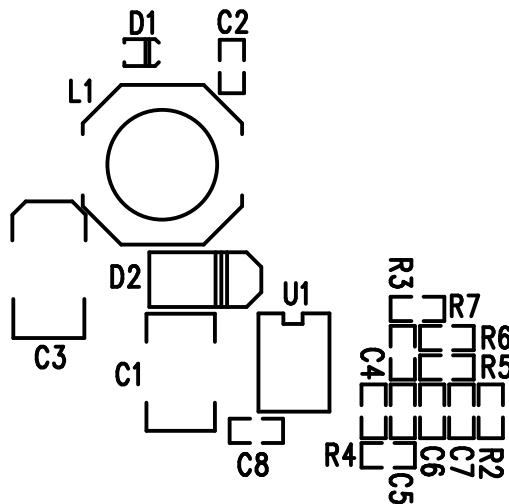
VIN
4V-60V



R1



SHDN



GND



PGOOD



R8

SYNC



PGFB
OPTION



GND



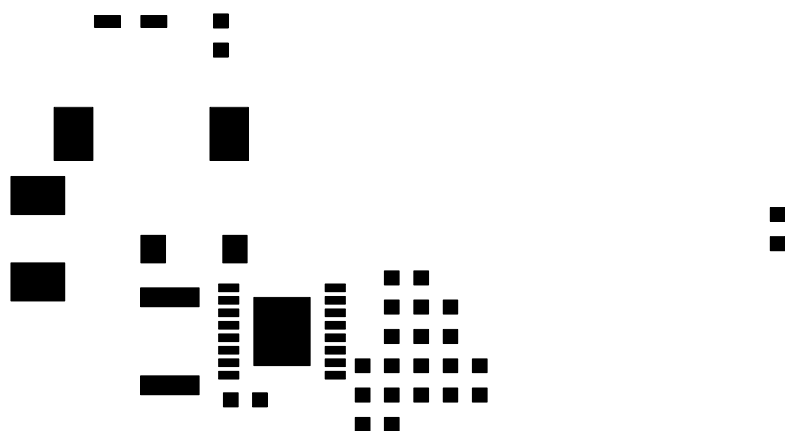
(408)432-1900
www.linear.com

LTC CONFIDENTIAL - FOR CUSTOMER USE ONLY

TOP SOLDER PASTE

LINEAR TECHNOLOGY

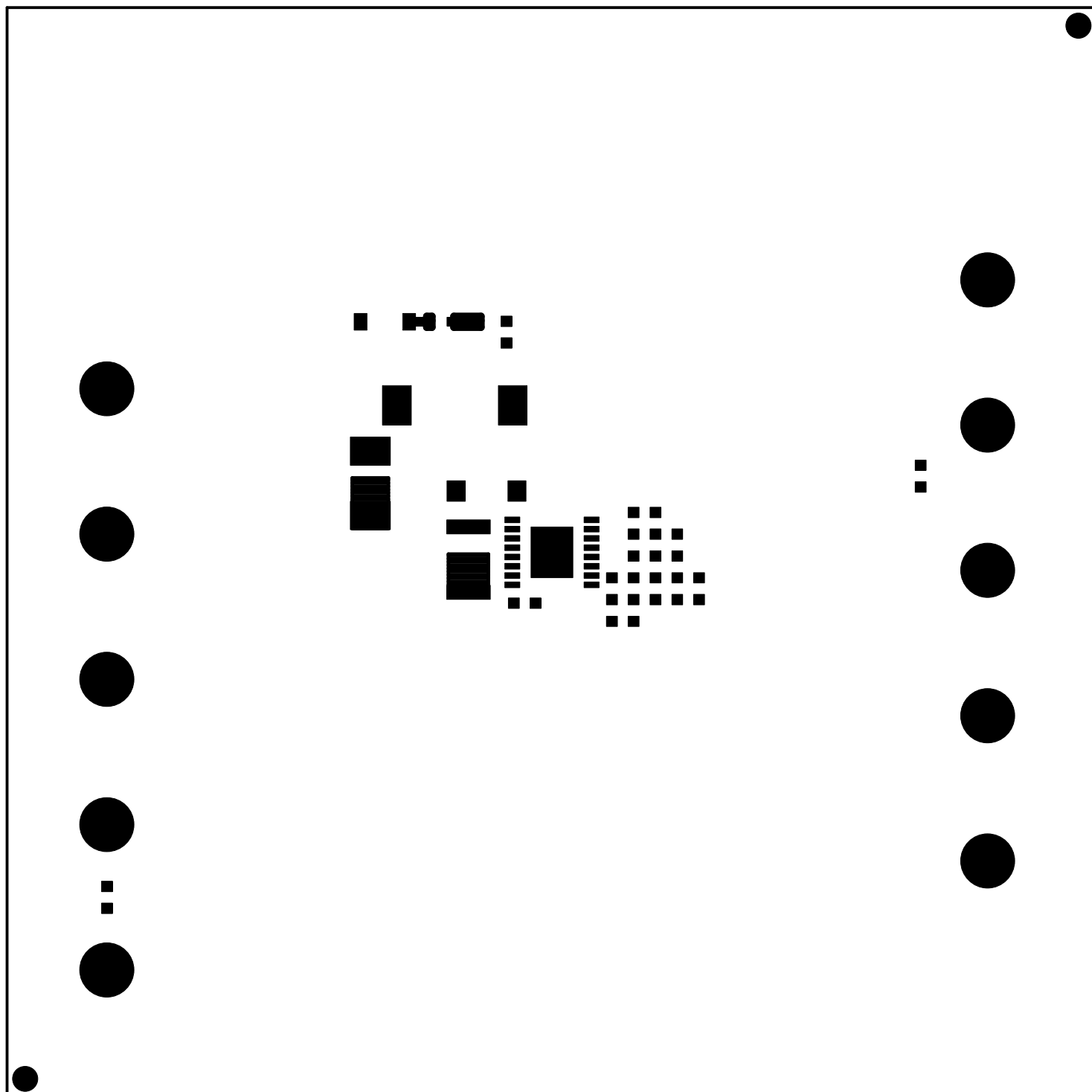
DC977A



TOP SOLDER MASK

LINEAR TECHNOLOGY

DC977A



LAYER 1 – TOP LAYER

LINEAR TECHNOLOGY

DC977A

