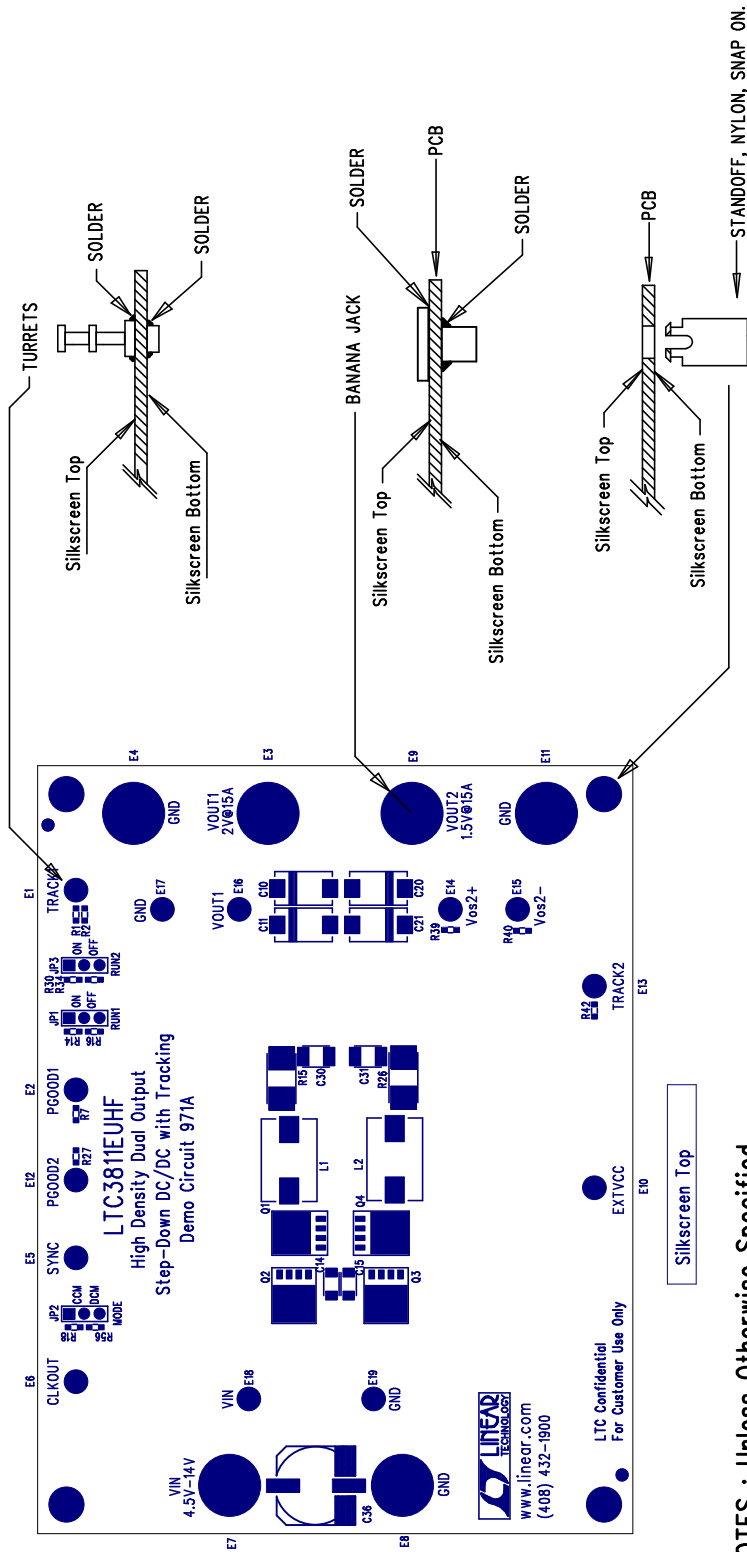


REVISIONS		
REV	DESCRIPTION	DATE



NOTES : Unless Otherwise Specified

1. BREAK BOARDS FROM THE PANEL WHEN ASSEMBLY IS COMPLETE.
2. JUMPER INSTALLATION: JP1: ON JP2: CCM JP3: ON

ASSY DRAWING

APPROVALS					1630 McCarthy Blvd. Milpitas, CA 95035 PH: (408)432-1900	
INIT		DATE				
DRAWN						
CHECK						
DESIGN		J. Wu	10/3/05			
ENGR		H. Zhang	10/3/05			
TITLE:			LTC3811EUHF High Density Dual Output Step-Down DC/DC with Tracking			
SIZE		IDEMO		DC971A		REV. A
DES-						SHT 1 of 1
SCALE = NONE						