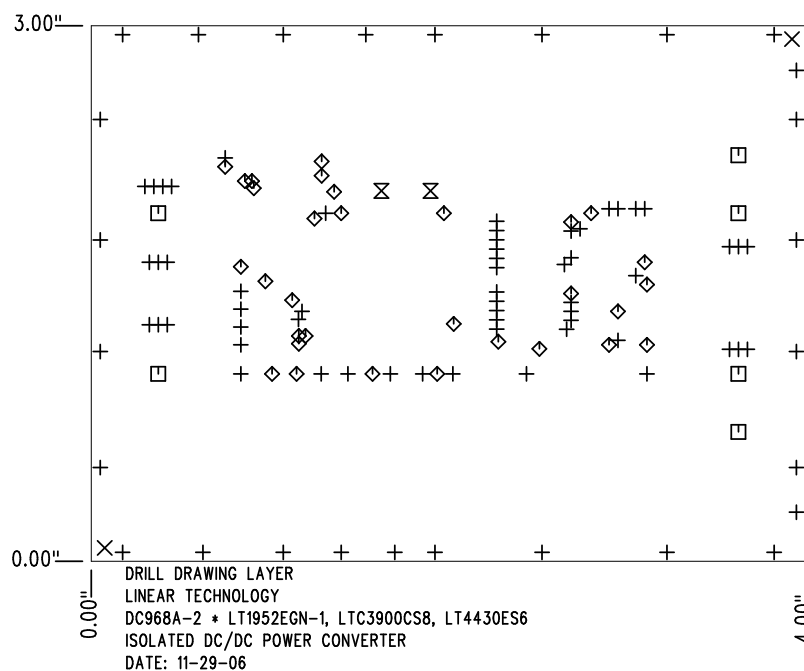


REVISIONS			
REV	DESCRIPTION	APPR	DATE
A-2	3RD PROTOTYPE	GP	11-29-06

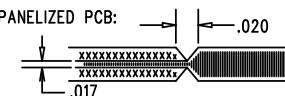



SHOWN FROM COMPONENT SIDE

SIZE	QTY	SYM	PLATED	TOL
0.025	84	+	YES	+/-0.003"
0.072	2	×	NO	+/-0.003"
0.094	6	□	YES	+/-0.003"
0.015	31	◇	YES	+/-0.003"
0.05	2	⊗	YES	+/-0.003"

NOTES: UNLESS OTHERWISE SPECIFIED

- FAB PER IPC-A-600
- MATERIAL: EPOXY FIBERGLASS, NEMA GRADE FR-4
FINISHED THICKNESS TO BE 0.062" +/- .005"
TOTAL OF 6 LAYERS WITH 2 OZ. CU ON THE
OUTER LAYERS AND 1 OZ. CU ON THE INNER LAYERS.
FLAMABILITY RATING: 94 V-0 MINIMUM .
- SIZE: CUT TO DIMENSIONS AND TOLERANCES SHOWN.
0.00" ARE PRIMARY DATUMS.
- DRILLING: DRILL HOLES PER SCHEDULE. PLATE THROUGH
HOLES WITH COPPER, 0.001" THICK MIN.
ALL HOLE SIZES ARE SPECIFIED AFTER PLATING.
HOLE LOCATION TOLERANCES ARE +/-0.003"
IN RELATION TO CENTER
- FINISH: SMOBC USING LPI BOTH SIDES, COLOR RED.
WHITE TIN IMMERSION (OMIKRON).
FOR SILKSCREEN: USE WHITE NON-CONDUCTIVE INK.
- DO NOT ALTER ARTWORK e.g. TO ADD LOGO OR DATE CODE.
- SCORING FOR PANELIZED PCB:



APPROVALS <table border="1"> <tr> <th></th> <th>INIT</th> <th>DATE</th> </tr> <tr> <td>DRAWN</td> <td></td> <td></td> </tr> <tr> <td>CHECK</td> <td></td> <td></td> </tr> <tr> <td>DESIGN</td> <td>KIM T.</td> <td>11-29-06</td> </tr> <tr> <td>ENGR</td> <td>GORAN P.</td> <td>11-29-06</td> </tr> </table>				INIT	DATE	DRAWN			CHECK			DESIGN	KIM T.	11-29-06	ENGR	GORAN P.	11-29-06	 1630 MCCARTHY BLVD MILPITAS, CA 95035 PH: (408)432-1900 LTC CONFIDENTIAL- FOR CUSTOMER USE ONLY	
				INIT	DATE														
DRAWN																			
CHECK																			
DESIGN	KIM T.	11-29-06																	
ENGR	GORAN P.	11-29-06																	
TITLE: FABRICATION DRAWING ISOLATED DC/DC POWER CONVERTER			SIZE A DEMO DC968A-2 REV. A-2 LT1952EGN-1, LTC3900CS8, LT4430ES6																
SCALE = NONE			SHT 1 of 1																