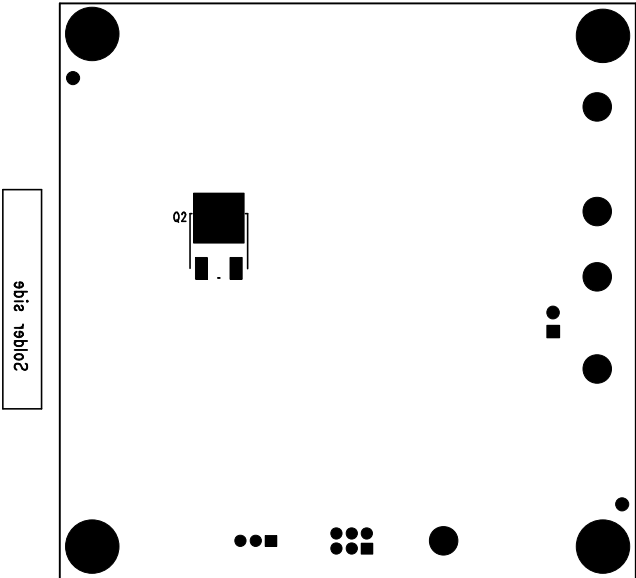



REVISIONS			
REV	DESCRIPTION	APPR	DATE



Bottom View

Assembly Bottom Drawing

APPROVALS			
DRAWN	INIT	DATE	
CHECK			
DESIGN	Heben	11/22/05	
ENGR	DCAMY	11/22/05	
SCALE = NONE			

<div>  <div> LINEAR TECHNOLOGY </div> </div> <div> 1630 McCarthy Blvd. Milpitas, CA 95035 PH: (408)432-1900 </div>			
TITLE: LTC3824EMSE High Voltage, P-CH MOSFET Step-Down Controller			
SIZE	A	DEMO	DC960A
			REV. A
DES-250		SHEET 2 of 2	