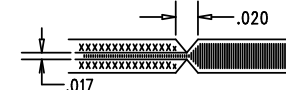


REVISIONS			
REV	DESCRIPTION	APPR	DATE
A-1	FINAL FABRICATION	DB	07-11-07

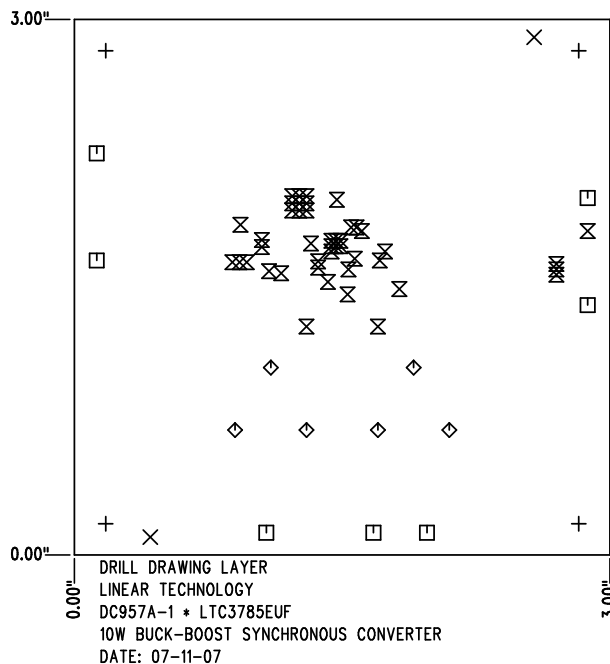
SIZE	QTY	SYM	PLATED	TOL
0.19	4	+	YES	+/-0.003"
0.07	2	X	NO	+/-0.003"
0.064	7	□	YES	+/-0.003"
0.035	6	◇	YES	+/-0.003"
0.012	44	⊗	YES	+/-0.003"


**NOTES: UNLESS OTHERWISE SPECIFIED**

- FAB PER IPC-A-600
- MATERIAL: EPOXY FIBERGLASS, NEMA GRADE FR-4  
FINISHED THICKNESS TO BE 0.062" +/- 0.006"  
TOTAL OF 4 LAYERS WITH 2 OZ. COPPER ON THE OUTER LAYERS AND 1 OZ. COPPER ON THE INTERNAL LAYERS.  
FLAMABILITY RATING: 94 V-0 MINIMUM .
- FINISH: SMOBC USING LPI BOTH SIDES, COLOR GREEN.  
WHITE TIN IMMERSION (OMIKRON).  
FOR SILKSCREEN: USE WHITE NON-CONDUCTIVE INK.
- DRILLING: DRILL HOLES PER SCHEDULE. ALL PLATED THROUGH HOLES WITH COPPER, 0.001" MIN. / 0.0015" MAX. COPPER PLATE  
ALL HOLE SIZES ARE SPECIFIED AFTER PLATING. HOLE LOCATION TOLERANCES ARE +/-0.01" IN RELATION TO CENTER
- DO NOT ALTER ARTWORK e.g. TO ADD LOGO OR DATE CODE.
- SCORING FOR PANELIZED PCB:



SHOWN FROM COMPONENT SIDE



APPROVALS			 <div>1630 McCarthy Blvd. Milpitas, CA 95035 PH: (408)432-1900</div>	
	INIT	DATE		
DRAWN			TITLE: FABRICATION DRAWING	
CHECK				
DESIGN	KIM T.	07-11-07	10W BUCK-BOOST SYNCHRONOUS CONVERTER	
ENGR	DAVID B.	07-11-07		
			SIZE A DEMO DC957A-1 * LTC3785EUF REV. A-1	
SCALE = NONE			SHT 1 of 1	