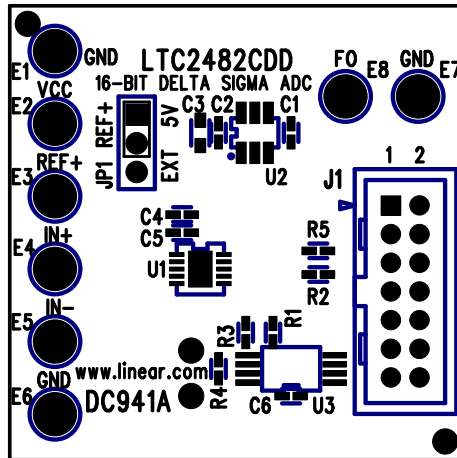



REVISIONS			
REV	DESCRIPTION	APPR	DATE
A	PROTOTYPE RELEASE	MT	06-15-05



TOP SILKSCREEN  
LINEAR TECHNOLOGY  
DC941A \* LTC2482CDD  
16-BIT DELTA SIGMA ADC  
DATE: 08-10-05

**NOTES: UNLESS OTHERWISE SPECIFIED**

1. WORKMANSHIP SHALL BE IN ACCORDANCE WITH IPC-A-610.
2. INSTALL SHUNTS ON JP1 PIN 1 AND 2.
3. PARTS TO OMIT WILL BE SPECIFIED ON THE BILL OF MATERIALS.  
LOCATIONS OF OMITTED PARTS SHALL BE FREE OF SOLDER.  
MASK THE SOLDER STENCIL WHERE SMT PARTS ARE OMITTED.
4. DEPANELIZE BOARDS AFTER ASSEMBLY AND ROUTE-OUT THE BREAKOUT  
TABS ON FOUR SIDES OF THE BOARD EDGE.
5. ASSY PROCESSES SHALL INCLUDE: REFLOW SOLDER TOP SIDE SMD.

APPROVALS			 <b>LINEAR</b> <b>TECHNOLOGY</b>		1630 MCCARTHY BLVD MILPITAS, CA 95035 PH: (408)432-1900 LTC CONFIDENTIAL- FOR CUSTOMER USE ONLY
	INIT	DATE	TITLE: TOP ASSEMBLY DRAWING <b>16-BIT DELTA SIGMA ADC</b> SIZE      DEMO      REV. A        DC941A * LTC2482CDD      A		
DRAWN					
CHECK					
DESIGN	KIM T.	08-10-05			
ENGR	MARK T.	08-10-05			
SCALE = NONE			DES- 0000		SHT 1 of 1