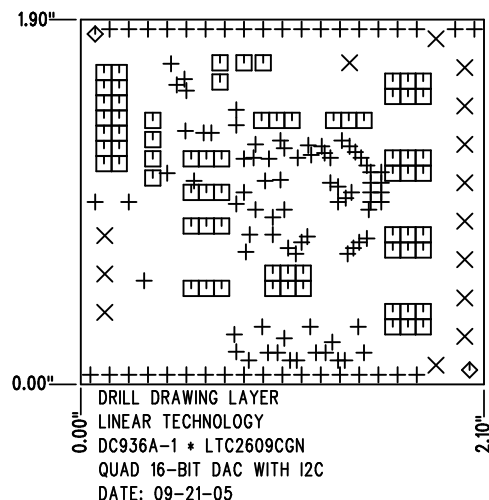


REVISIONS			
REV	DESCRIPTION	APPR	DATE
A-1	PRODUCTION	MT	09-21-05

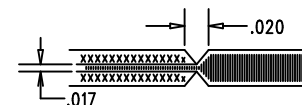



SHOWN FROM COMPONENT SIDE

SIZE	QTY	SYM	PLTD	TOL
0.012	117	+	YES	+/-0.003"
0.064	14	X	YES	+/-0.003"
0.035	70	□	YES	+/-0.003"
0.07	2	◇	NO	+/-0.003"

NOTES: UNLESS OTHERWISE SPECIFIED

- FAB PER IPC-A-600
- MATERIAL: EPOXY FIBERGLASS, NEMA GRADE FR-4
 FINISHED THICKNESS TO BE 0.062" +/- 0.006"
 TOTAL OF 4 LAYERS WITH 2 OZ. COPPER ON THE OUTER LAYERS AND 1 OZ. COPPER ON THE INTERNAL LAYERS.
 FLAMABILITY RATING: 94 V-0 MINIMUM .
- FINISH: SMOBC USING LPI BOTH SIDES, COLOR GREEN.
 WHITE TIN IMMERSION (OMIKRON).
 FOR SILKSCREEN: USE WHITE NON-CONDUCTIVE INK.
- DRILLING: DRILL HOLES PER SCHEDULE. ALL PLATED THROUGH HOLES WITH COPPER, 0.001" MIN. / 0.0015" MAX. COPPER PLATE
 ALL HOLE SIZES ARE SPECIFIED AFTER PLATING. HOLE LOCATION TOLERANCES ARE +/-0.01" IN RELATION TO CENTER
- DO NOT ALTER ARTWORK e.g. TO ADD LOGO OR DATE CODE.
- SCORING FOR PANELIZED PCB:



APPROVALS			 LINEAR TECHNOLOGY 1630 MCCATHY BLVD MILPITAS, CA 95035 PH: (408)432-1900 LTC CONFIDENTIAL- FOR CUSTOMER USE ONLY	
DRAWN	INIT	DATE		
CHECK			TITLE: FABRICATION DRAWING QUAD 16-BIT DAC WITH I2C	
DESIGN	KIM T.	09-21-05		
ENGR	MARK T.	09-21-05	SIZE A DEMO DC936A-1 * LTC2609CGN REV. A-1	
SCALE = NONE			DES- 0000	SHT 1 of 1