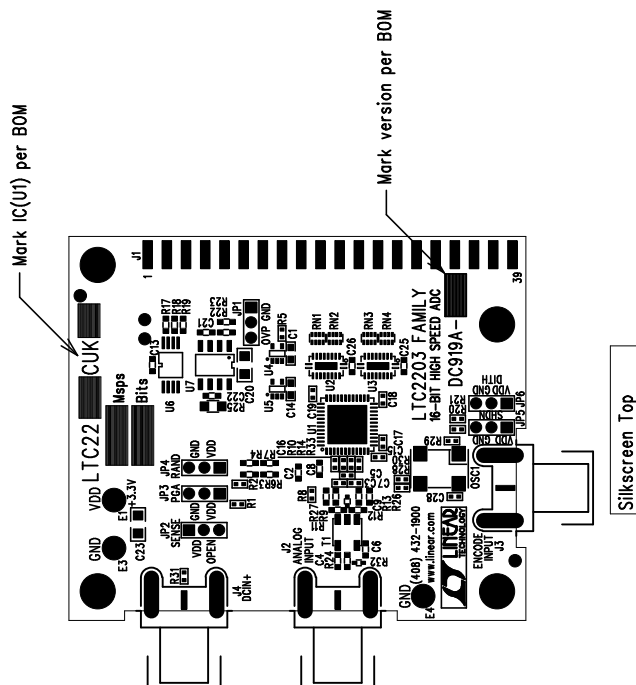


REVISIONS			
REV	DESCRIPTION	APPR	DATE




NOTES : Unless Otherwise Specified

1. BREAK BOARDS FROM THE PANEL WHEN ASSEMBLY IS COMPLETE.
2. OPTIONAL COMPONENTS ARE UNSTUFFED AND SHOULD BE FREE OF SOLDER AFTER ASSEMBLY.
3. JUMPER INSTALLATION:

JP1: GND
JP2: VDD
JP3: GND
JP4: GND
JP5: GND
JP6: GND

ASSY DRAWING

APPROVALS			 LINEAR TECHNOLOGY		1630 McCarthy Blvd. Milpitas, CA 95035 Ph: (408)432-1900	
	INIT	DATE				
DRAWN						
CHECK						
DESIGN	JUNE WU	4/12/05	TITLE: LTC2203 FAMILY			
ENGR	Derek R.	4/12/05	16 BIT HIGH SPEED ADC			
			SIZE	DEMO	DC919A	REV. A
SCALE = NONE			DES-250		SHT 1 of 1	