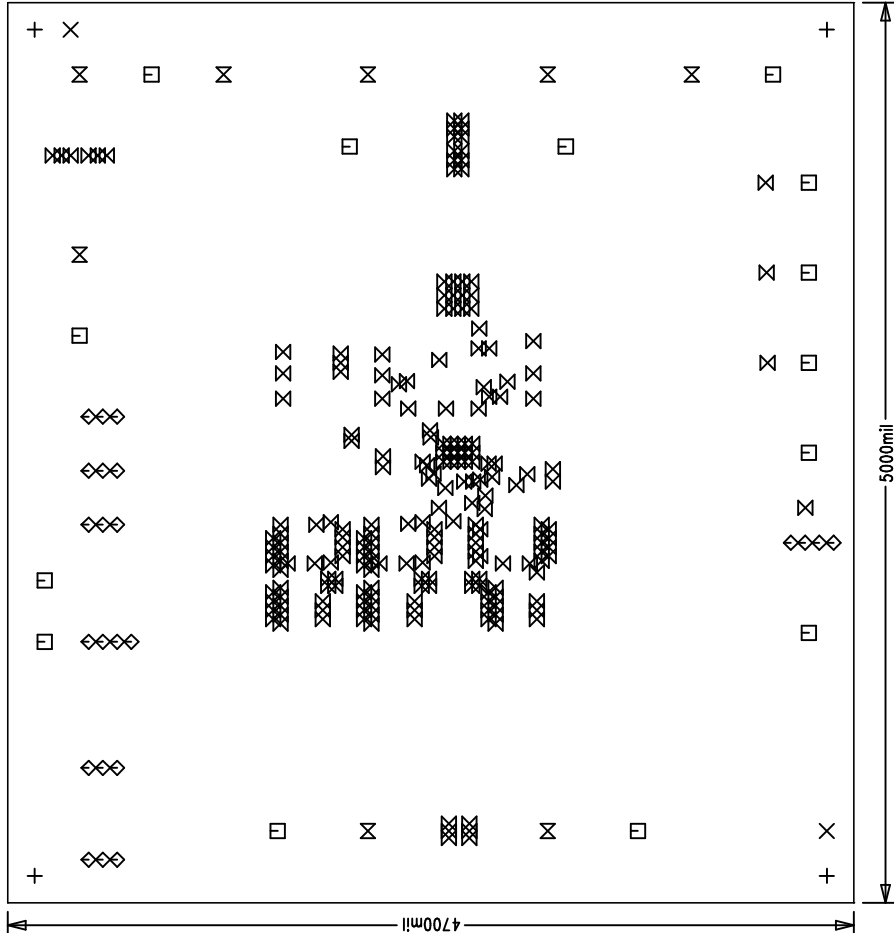


Demo Circuit 913A
Linear Tech. Corp.

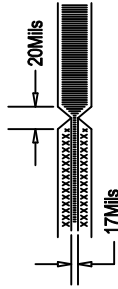


REVISIONS

REV	APPR	DATE
-----	------	------


NOTES: UNLESS OTHERWISE SPECIFIED.

1. ARTWORK PIN DEMO CIRCUIT 913A Rev1
2. FAB PER IPC-A-600. 6-Layers.
3. MATERIAL: EPOXY FIBERGLASS, NEMA GRADE FR-4
.062 +/- .005 INCH THICKNESS WITH 2 OZ.
COPPER FINISH ON TWO OUTER LAYERS AND
1 OZ. COPPER ON FOUR INTERNAL LAYERS.
FLAMABILITY RATING: 94 V-2 MINIMUM .
4. SIZE: CUT TO DIMENSIONS AND TOLERANCES SHOWN.
0.00 ARE PRIMARY DATUMS.
5. BOARD: SELECTIVE PLATED BOARD. SOLDER
MASK OVER BARE COPPER, COLOR, GREEN LPI.
WHITE TIN IMMERSION (OMIKRON) BOTH SIDES.
SILKSCREEN COMPONENT SIDE WITH WHITE NON-
CONDUCTIVE INK.
PLATE THRU ALL HOLES WITH COPPER
MIN. PLATING THICKNESS: 1 OZ. EXCEPT
WHERE PLATING NOT REQUIRED
6. DRILL: ALL HOLES SHALL BE DRILLED +/- .003 INCH
WITH RESPECT TO CTR. OF DRILLED PAD.
ALL HOLES FINISHED SIZE AFTER PLATING.
7. DROP ALL UNUSED PADS ON INNER LAYERS.
8. DO NOT ALTER ARTWORK e.g. TO ADD LOGO OR DATE CODE.
9. SCORING:



Fabrication Drawing

APPROVALS		INIT	DATE
DRAWN	CHECK		
DESIGN	ENGR	Rmb	HenryZ
SCALE = NONE			

 LINEAR TECHNOLOGY		1630 McCarthy Blvd. Milpitas, CA 95035 PH: (408)432-1900	
TITLE: Polyphase 3-Output Step-Down Supply with Tracking		REV. 1	
SIZE NONE		Demo Circuit 913A	
DES-2300xx		SHT 1 of 1	