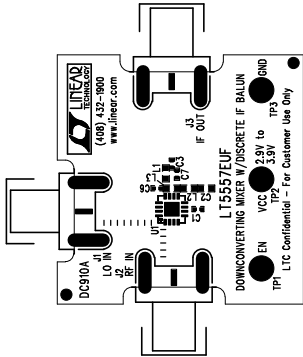
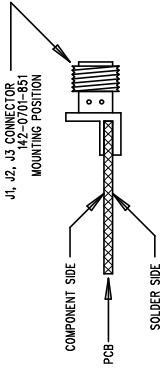


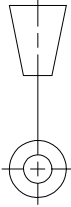
LTC CONFIDENTIAL – For Customer Use Only



- NOTES: UNLESS OTHERWISE SPECIFIED
1. WORKMANSHIP SHALL BE IN ACCORDANCE WITH IPC-A-610.
 2. PLACE UT 50 PIN-1 TRIANGLE IS IN UPPER-LEFT POSITION.
 3. INSERT SMA CONNECTORS FLUSH AGAINST BOARD EDGE.
 4. ASSY PROCESSES SHALL INCLUDE: REFLOW SOLDER TOP SIDE SMD.
HAND SOLDER BOTTOM SIDE SMD.
HAND SOLDER BOTTOM THRU-HOLE COMPONENTS.
 5. PARTS TO OMIT WILL BE SPECIFIED ON THE PARTS LIST.
LOCATIONS OF OMITTED PARTS SHALL BE FREE OF SOLDER.
MASK THE SOLDER STENCIL WHERE SMT PARTS ARE OMITTED.
 6. SHORTAGES SHALL EXIST ON THE MINIMUM NUMBER OF BOARDS.
 7. DO NOT OTHERWISE MARK BOARDS (e.g. NO QA-STAMP).
 8. DEPANELIZE BOARDS AFTER ASSEMBLY. DO NOT BEND.
USE DIAGONAL CUTTERS TO SEPARATE PCB'S.

UNLESS OTHERWISE SPECIFIED
DIMENSIONS ARE IN INCHES
TOLERANCES ON ANGLE $\pm 1^\circ$
2 PLACE ± 0.1 3 PLACE ± 0.05
INTERPRET DIM AND TOL
PER ASME Y14.5M – 1994

THIRD ANGLE PROJECTION



DO NOT SCALE DRAWING

LINEAR
TECHNOLOGY
1630 McCarthy Blvd.
Milpitas, CA 95035
Phone: (408)432-1900
Fax: (408)434-0507

TITLE
LT5557EUF DOWNCONVERTING MIXER
W/ DISCRETE IF BALUN

SIZE	CAGE CODE	DWG NO	REV
A		DC910A	A
SCALE	1/1	FILENAME:	SHEET 1 OF 1