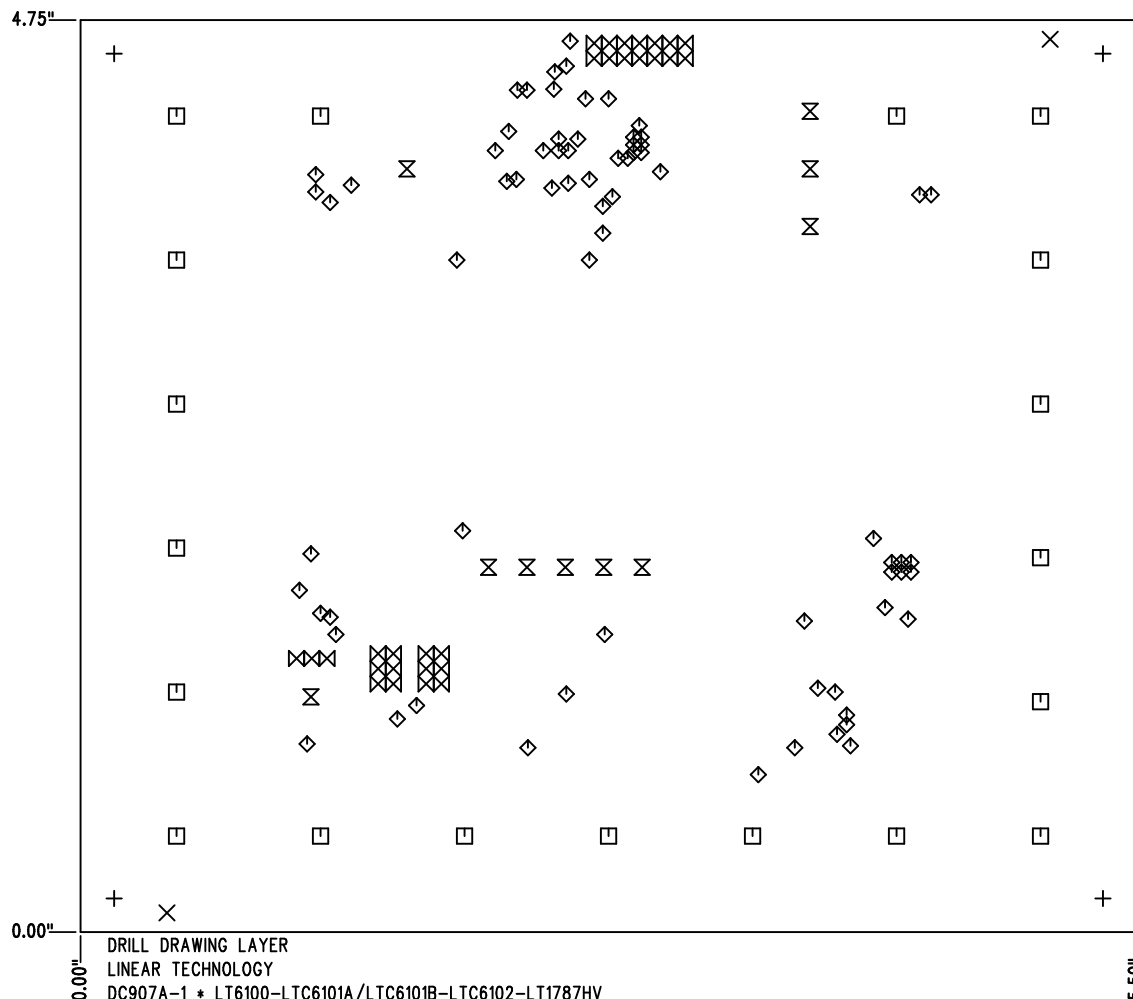


REVISIONS			
REV	DESCRIPTION	APPR	DATE
A-1	FINAL RELEASE	JM	09-12-05



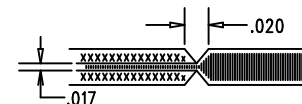
DRILL DRAWING LAYER
 LINEAR TECHNOLOGY
 DC907A-1 * LT6100-LTC6101A/LTC6101B-LTC6102-LT1787HV
 CURRENT SENSE TECHNIQUES
 DATE: 09-12-05


SHOWN FROM COMPONENT SIDE

SIZE	QTY	SYM	PLTD	TOL
0.19	4	+	YES	+/-0.003"
0.07	2	×	NO	+/-0.003"
0.21	19	□	YES	+/-0.003"
0.015	71	◇	YES	+/-0.003"
0.064	10	⊗	YES	+/-0.003"
0.035	29	⊗	YES	+/-0.003"

NOTES: UNLESS OTHERWISE SPECIFIED

- FAB PER IPC-A-600
- MATERIAL: EPOXY FIBERGLASS, NEMA GRADE FR-4
 FINISHED THICKNESS TO BE 0.062" +/- 0.006"
 TOTAL OF 4 LAYERS WITH 2 OZ. COPPER ON THE OUTER LAYERS AND 1 OZ. COPPER ON THE INTERNAL LAYERS.
 FLAMABILITY RATING: 94 V-0 MINIMUM .
- FINISH: SMOBC USING LPI BOTH SIDES, COLOR GREEN.
 WHITE TIN IMMERSION (OMIKRON).
 FOR SILKSCREEN: USE WHITE NON-CONDUCTIVE INK.
- DRILLING: DRILL HOLES PER SCHEDULE. ALL PLATED THROUGH HOLES WITH COPPER, 0.001" MIN. / 0.0015" MAX. COPPER PLATE
 ALL HOLE SIZES ARE SPECIFIED AFTER PLATING. HOLE LOCATION TOLERANCES ARE +/-0.01" IN RELATION TO CENTER
- DO NOT ALTER ARTWORK e.g. TO ADD LOGO OR DATE CODE.
- SCORING FOR PANELIZED PCB:



APPROVALS			 LINEAR TECHNOLOGY		1630 McCarthy Blvd Milpitas, CA 95035 PH: (408)432-1900	
	INIT	DATE				
DRAWN			TITLE: FABRICATION DRAWING CURRENT SENSE TECHNIQUES			
CHECK						
DESIGN	KIM T.	09-12-05	SIZE A DEMO DC907A-1 REV. A-1			
ENGR	JON M.	09-12-05				
			SCALE = NONE DES- 0000			
					SHT 1 of 1	