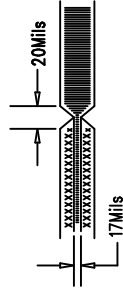


LTC CONFIDENTIAL – For Customer Use Only

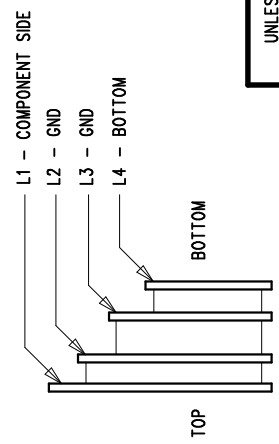
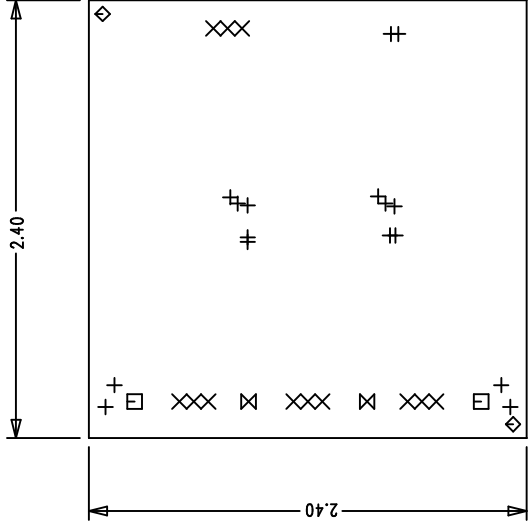
REVISION HISTORY			
ECO	REV	DESCRIPTION	DATE
	3	PROTO	11/22/05

NOTES: UNLESS OTHERWISE SPECIFIED,

- ARTWORK P/N DC905A REV 3.
- FAB PER IPC-A-600
- MATERIAL: EPOXY FIBERGLASS, NEMA GRADE FR-4 .062 +/- .005 INCH THICKNESS WITH 2 OZ. COPPER FINISH ON TWO OUTER LAYERS AND 1 OZ. COPPER ON TWO INTERNAL LAYERS. FLAMABILITY RATING: 94 V-2 MINIMUM .
- SIZE: CUT TO DIMENSIONS AND TOLERANCES SHOWN. 0.00 ARE PRIMARY DATUMS.
- BOARD: SELECTIVE PLATED BOARD. SOLDER MASK OVER BARE COPPER, COLOR, GREEN LPI. WHITE TIN IMMERSION (OMIKRON) BOTH SIDES. SILKSCREEN COMPONENT SIDE WITH WHITE NON-CONDUCTIVE INK. PLATE THRU ALL HOLES WITH COPPER MIN. PLATING THICKNESS: 1 OZ. EXCEPT WHERE PLATING NOT REQUIRED
- DRILL: ALL HOLES SHALL BE DRILLED +/- .003 INCH WITH RESPECT TO CTR. OF DRILLED PAD. ALL HOLES FINISHED SIZE AFTER PLATING.
- DROP ALL UNUSED PADS ON INNER LAYERS.
- DO NOT ALTER ARTWORK e.g. TO ADD LOGO OR DATE CODE.
- SCORING:



SIZE	QTY	SYM	PLTD	TOL
10	16	+	YES	+/-0.003
30	12	×	YES	+/-0.003
64	2	□	YES	+/-0.005
70	2	◇	NO	+/-0.005
95	2	⊗	YES	+/-0.01



LINEAR TECHNOLOGY

1630 McCarthy Blvd.
Milpitas, CA 95035

Phone: (408)432-1900
Fax: (408)434-0507

CONTRACT NO.

UNLESS OTHERWISE SPECIFIED
DIMENSIONS ARE IN INCHES
TOLERANCES ON ANGLE ± 1°
2 PLACE ± .01 3 PLACE ± .005
INTERPRET DIM AND TOL
PER ASME Y14.5M - 1994

THIRD ANGLE PROJECTION

DO NOT SCALE DRAWING

APPROVALS

DRAWN
MEI

CHECKED

APPROVED

DESIGNED BY

DATE

04/11/05

TITLE

FAB, LT3491ESC8, LED DRIVER IN SC70
WITH BUILT-IN SCHOTTKY

SIZE
A

CAGE CODE

DWG NO.
DC905A

REV
3

SCALE
1/1

FILENAME:
905A-3.PCB

SHEET
1

OF
1