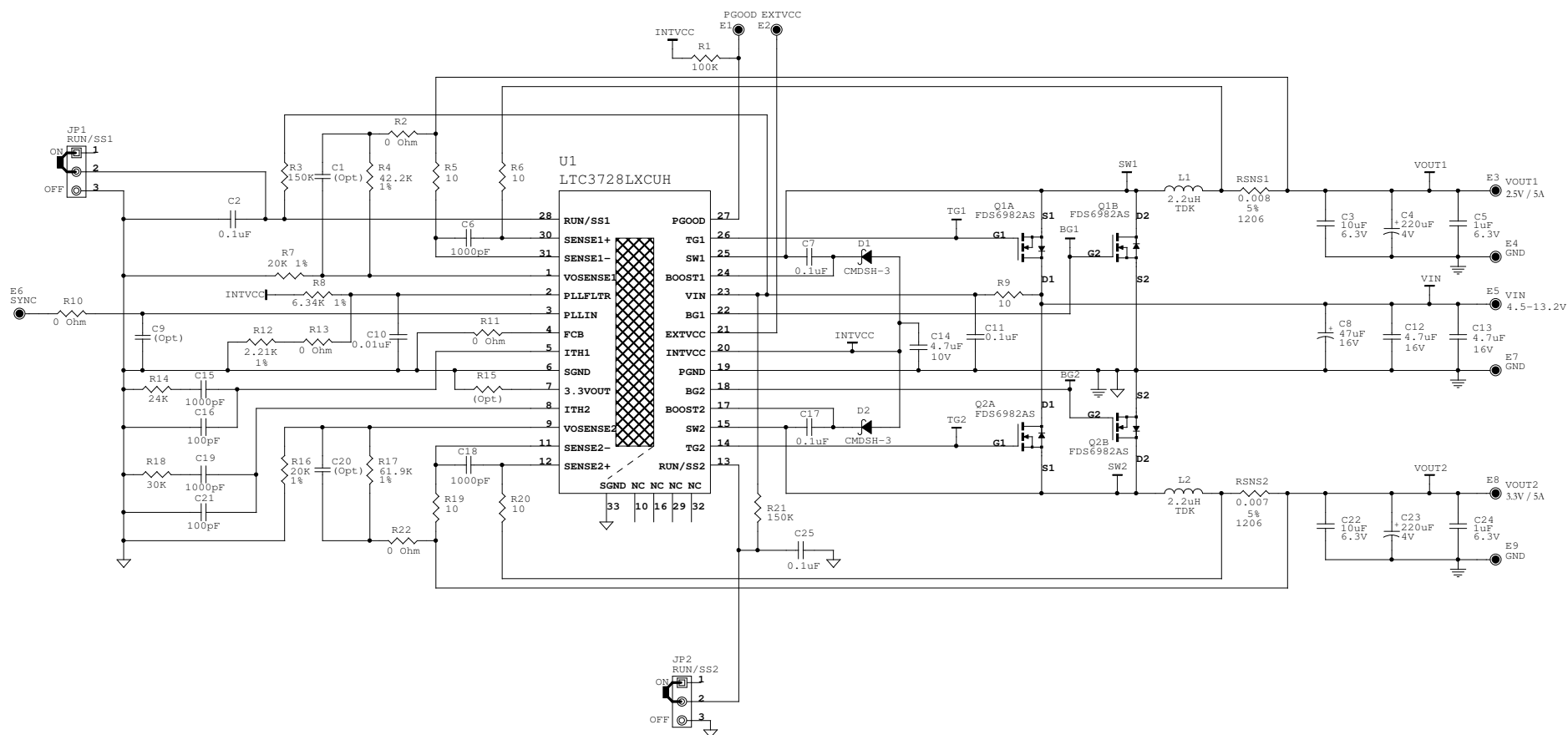


REVISION HISTORY				
ECO	REV	DESCRIPTION	DATE	APPROVED
	0	1st <b>PROTOTYPE</b>	<DATE>	<APPROVED>



This circuit is proprietary to Linear Technology and supplied for use with Linear Technology parts.  
**Customer Notice:** Linear Technology has made a best effort to design a circuit that meets customer-supplied specifications; however, it remains the customers responsibility to verify proper and reliable operation in the actual application. Component substitution and printed circuit board layout may significantly affect circuit performance or reliability. Contact Linear Applications Engineering for assistance.

#### APPROVALS

**DRAWN:** Rudy Bautista  
**ENGINEER:** Henry Zhang

**APPROVED:**

**CHECKED:**

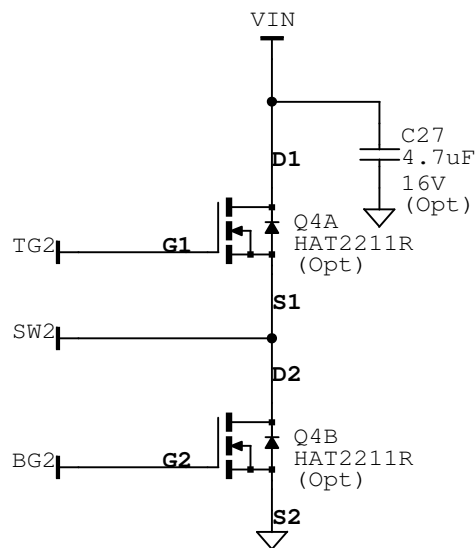
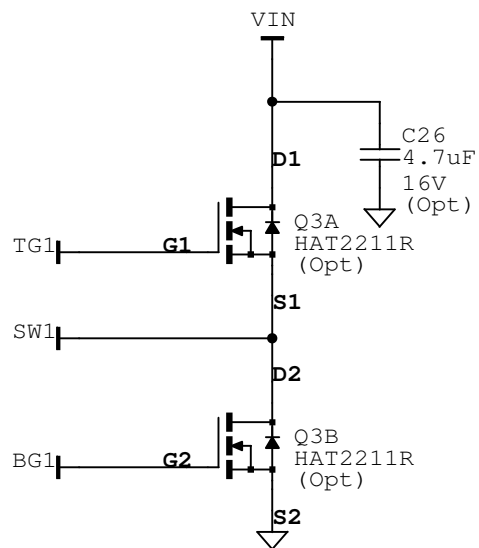
DCxxx\_A\_00\_PCB xxx\_A\_x\_DSN

**LINEAR TECHNOLOGY CORPORATION**  
 1630 McCARTHY BLVD  
 MILPITAS, CA. 95035 [www.linear.com](http://www.linear.com)  
 (408) 432-1900  
 (408) 434-0507 (FAX)  
 LTC Confidential - For Customer Use Only

#### HIGH EFFICIENCY DUAL REGULATOR

**DEMO CIRCUIT 899A**

Date: Thursday, January 26, 2006 Sheet 1 of 2



This circuit is proprietary to Linear Technology and supplied for use with Linear Technology parts.

**Customer Notice:** Linear Technology has made a best effort to design a circuit that meets customer-supplied specifications; however, it remains the customers responsibility to verify proper and reliable operation in the actual application, Component substitution and printed circuit board layout may significantly affect circuit performance or reliability. Contact Linear Applications Engineering for assistance.

## APPROVALS

**DRAWN:** Rudy Bautista

**ENGINEER:** Henry Zhang

**APPROVED:**

**CHECKED:**

DCxxxA\_00.PCB xxxA\_x.DSN

## LINEAR TECHNOLOGY CORPORATION

1630 McCARTHY BLVD  
MILPITAS, CA. 95035  
(408) 432-1900  
(408) 434-0507 (FAX)

[www.linear.com](http://www.linear.com)

LTC Confidential -

For Customer Use Only

Title

**HIGH EFFICIENCY DUAL REGULATOR**

Size

Document Number

Date:

Thursday, January 26, 2006

Sheet

2

of

2

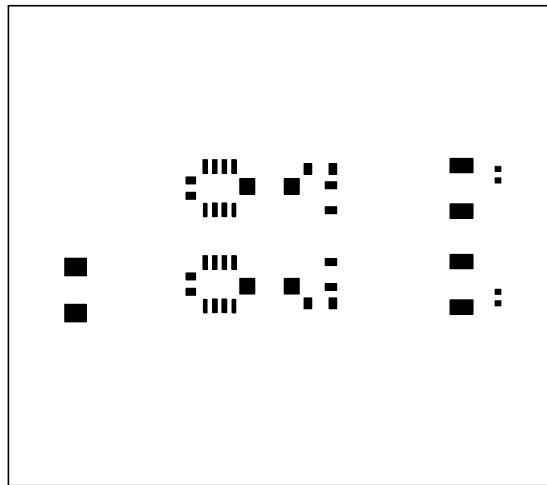
Rev

**1**

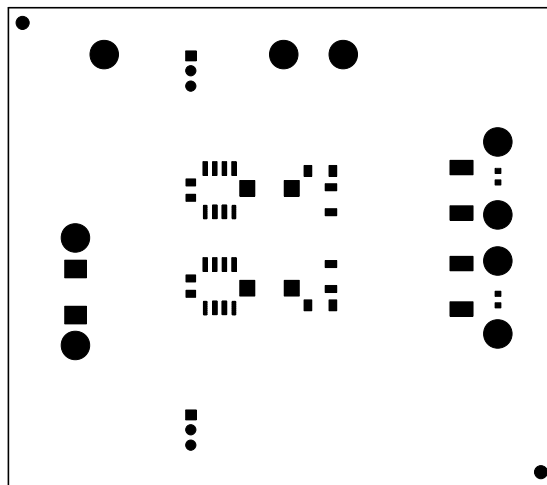
**DEMO CIRCUIT 899A**

Linear Tech. Corp.  
Demo Circuit 899A

PasteMask Top

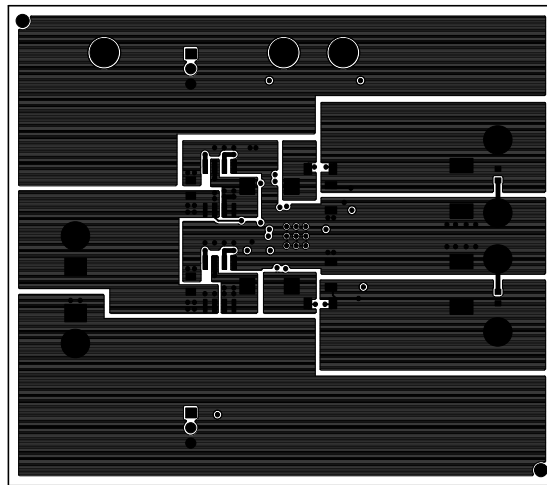


Linear Tech. Corp.  
Demo Circuit 899A  
SolderMask Top



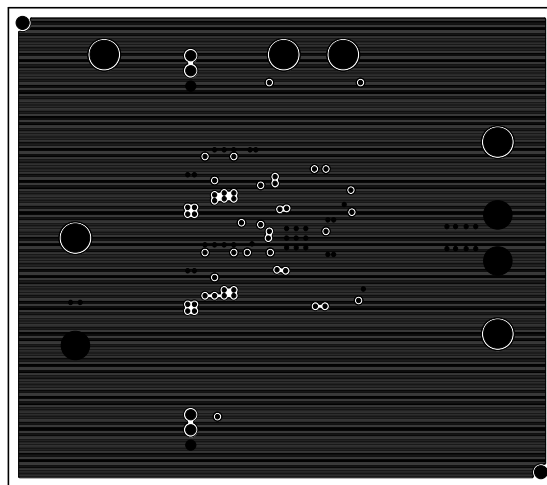
Linear Tech. Corp.  
Demo Circuit 899A

Component Side



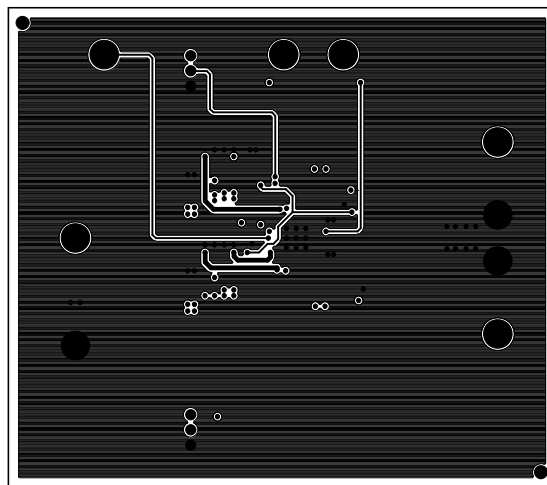
Linear Tech. Corp.  
Demo Circuit 899A

Layer2



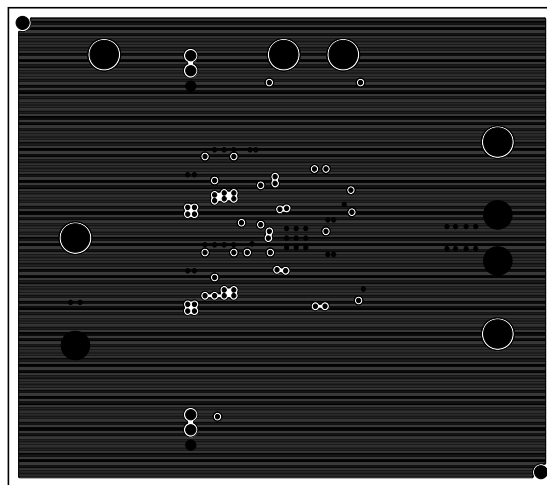
Linear Tech. Corp.  
Demo Circuit 899A

Layer3



Linear Tech. Corp.  
Demo Circuit 899A

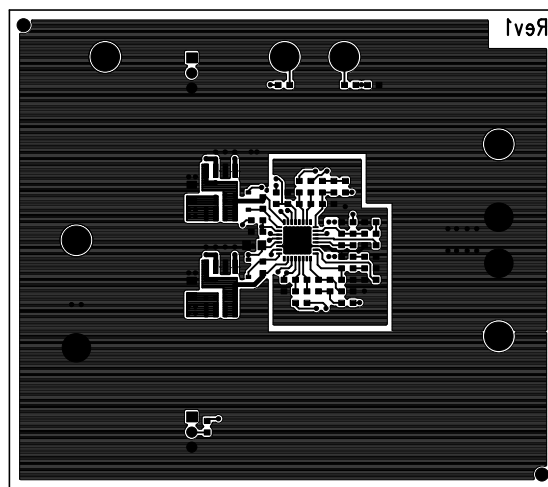
Layer5





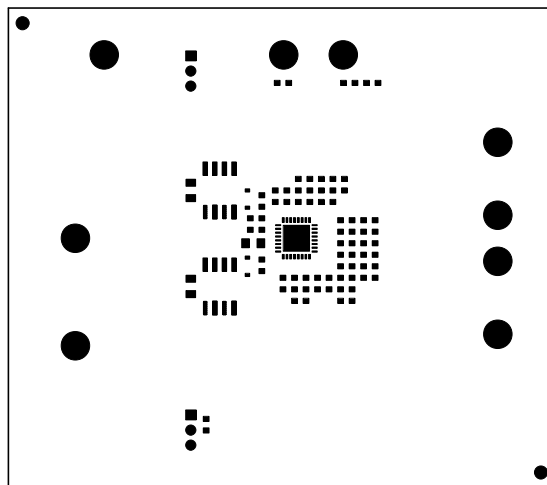
Linear Tech. Corp.  
Demo Circuit 899A

Solder Side



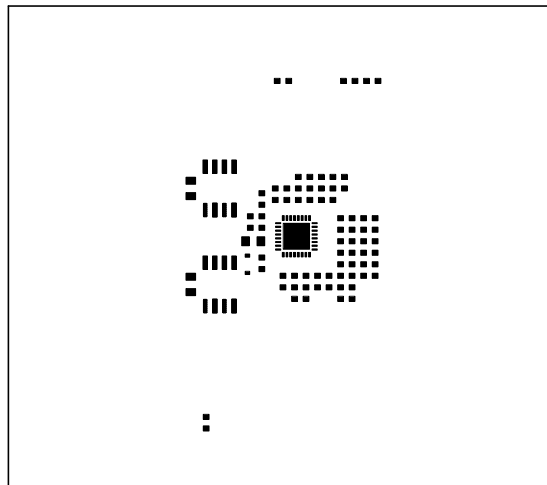
Linear Tech. Corp.  
Demo Circuit 899A

SolderMask Bottom

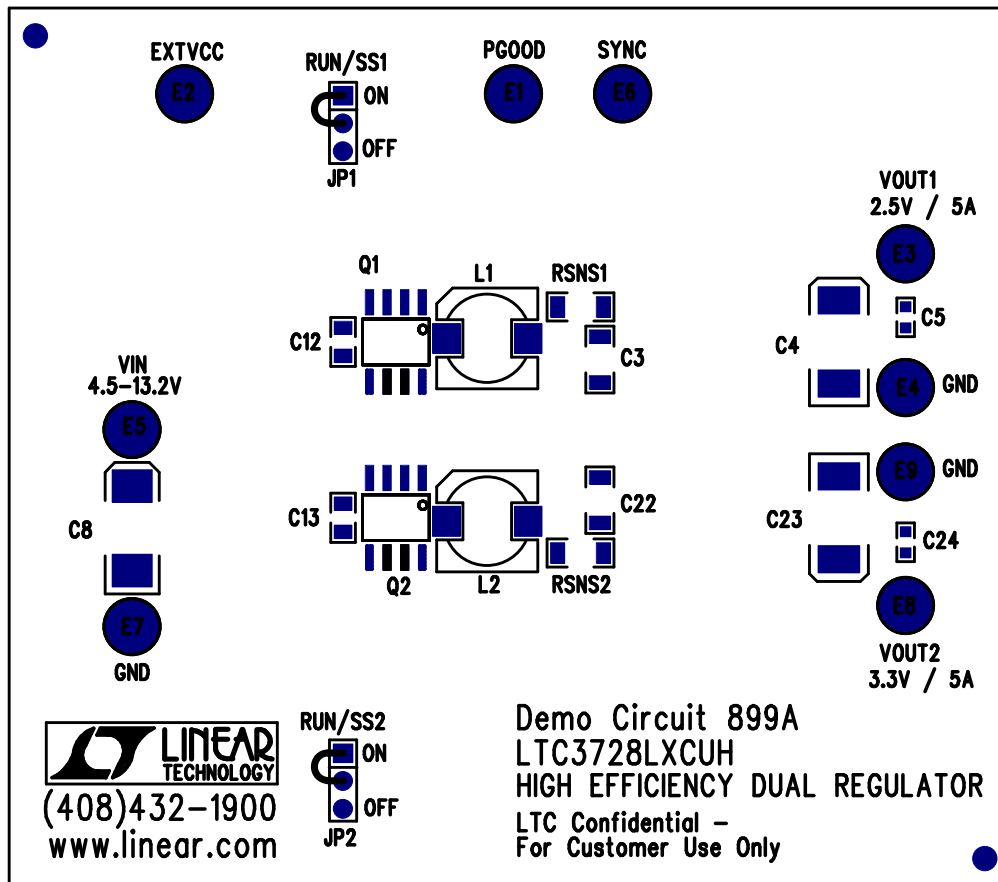


Linear Tech. Corp.  
Demo Circuit 899A


PasteMask Bottom



Linear Tech. Corp.  
Demo Circuit 899A  
Silkscreen Top

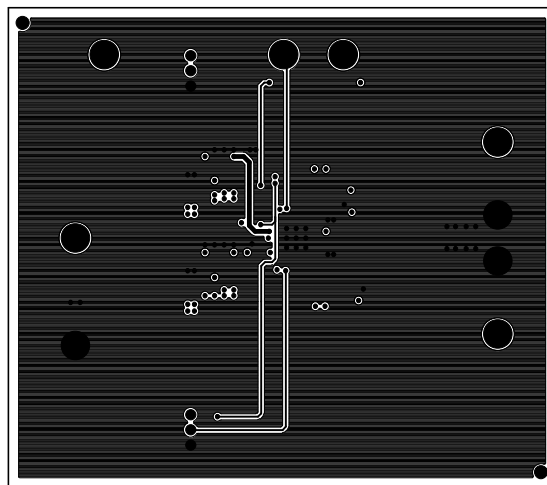


## Assembly Top Drawing

APPROVALS			 <b>LINEAR TECHNOLOGY</b>		1630 McCarthy Blvd. Milpitas, CA 95035 PH: (408)432-1900	
	INIT	DATE				
DRAWN			<b>TITLE:</b> HIGH EFFICIENCY DUAL REGULATOR			
CHECK						
DESIGN	RmB					
ENGR	HenryZ					
			SIZE	Demo Circuit 899A	REV. 1	
			NONE			
SCALE = NONE			DES-23xxxx		SHT 1 of 1	

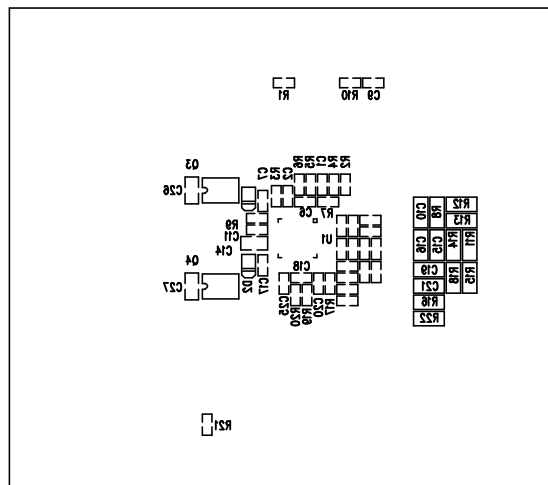
Linear Tech. Corp.  
Demo Circuit 899A

Layer4



Linear Tech. Corp.  
Demo Circuit 899A

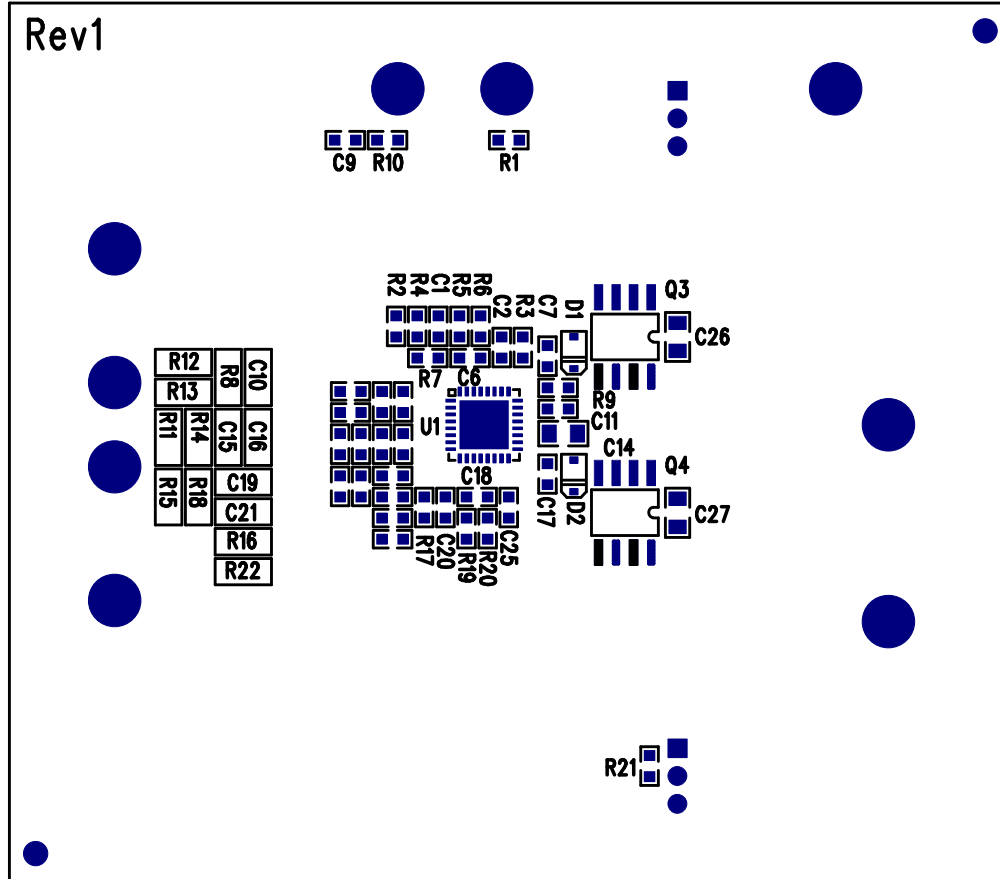
Silkscreen Bottom




Silkscreen Bottom

Linear Tech. Corp.  
Demo Circuit 899A

Solder Side

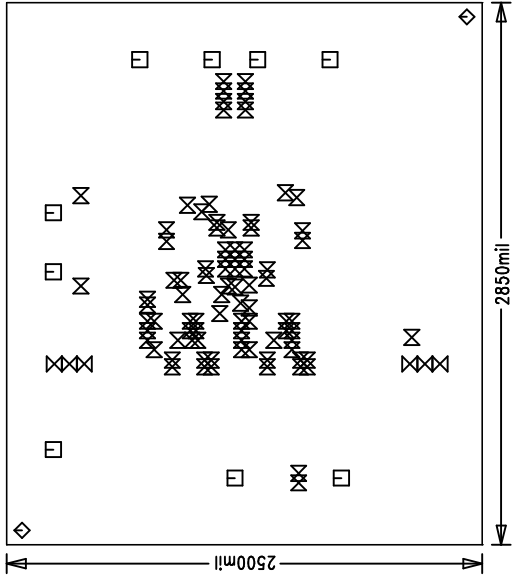


## Assembly Bottom Drawing

APPROVALS			 <b>LINEAR TECHNOLOGY</b>		1630 McCarthy Blvd. Milpitas, CA 95035 PH: (408)432-1900	
	INIT	DATE			TITLE:	
DRAWN			HIGH EFFICIENCY DUAL REGULATOR			
CHECK						
DESIGN	Rudy B		SIZE		Demo Circuit 899A	REV. 1
ENGR	HenryZ		NONE			
SCALE = NONE			DES-23xxx		SHT 2 of 2	

REVISIONS		
REV	APPR	DATE

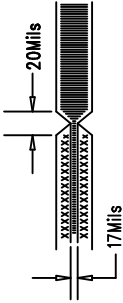
Linear Tech. Corp.  
Demo Circuit 899A



SIZE	QTY	SYM	PLTD	TOL
94	9		YES	+/-0.003
70	2		NO	+/-0.003
31	6		YES	+/-0.003
10	89		YES	+/-0.003

**NOTES: UNLESS OTHERWISE SPECIFIED:**

- ARTWORK P/N Demo Circuit 899A Rev1
- FAB PER IPC-A-600. 6-Layers.
- MATERIAL: EPOXY FIBERGLASS, NEMA GRADE FR-4 .062 +/- .005 INCH THICKNESS WITH 2 OZ. COPPER FINISH ON TWO OUTER LAYERS AND 1 OZ. COPPER ON FOUR INTERNAL LAYERS. FLAMABILITY RATING: 94 V-2 MINIMUM .
- SIZE: CUT TO DIMENSIONS AND TOLERANCES SHOWN. 0.00 ARE PRIMARY DATUMS.
- BOARD: SELECTIVE PLATED BOARD. SOLDER MASK OVER BARE COPPER, COLOR, GREEN LPI. WHITE TIN IMMERSION (OMIKRON) BOTH SIDES. SILKSCREEN COMPONENT SIDE WITH WHITE NON-CONDUCTIVE INK.
- PLATE THRU ALL HOLES WITH COPPER MIN. PLATING THICKNESS: 1 OZ. EXCEPT WHERE PLATING NOT REQUIRED
- DRILL: ALL HOLES SHALL BE DRILLED +/-0.003 INCH WITH RESPECT TO CTR. OF DRILLED PAD. ALL HOLES FINISHED SIZE AFTER PLATING.
- DROP ALL UNUSED PADS ON INNER LAYERS.
- DO NOT ALTER ARTWORK e.g. TO ADD LOGO OR DATE CODE.
- SCORING:



**Fabrication Drawing**

<b>APPROVALS</b>				1630 McCarthy Blvd. Milpitas, CA 95035 PH: (408)432-1900	
		DRAWN CHECK DESIGN ENGR	INIT DATE	TITLE: HIGH EFFICIENCY DUAL REGULATOR	
SCALE = NONE		DES-23xxxx		SHT 1 of 1	



Linear Tech. Corp.  
Demo Circuit 899A  
Silkscreen Top

