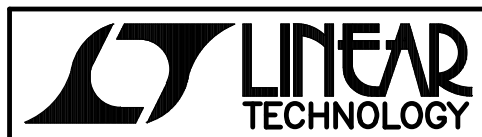


INSTALL SHUNT: JP1 – PINS 1 & 2



LT3493EDCB

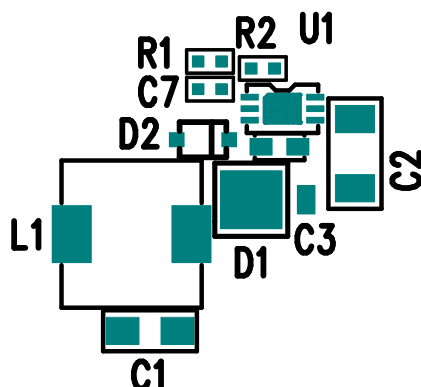
DEMO CIRCUIT 897A

(408) 432-1900 www.linear.com

1.2A, 750KHz STEP-DOWN SWITCHING  
REGULATOR IN 2mmX3mm DFN

LTC CONFIDENTIAL – FOR CUSTOMER USE ONLY

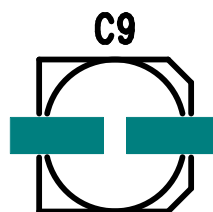
VIN	IOUT(MAX)
4.5V	0.95A
8V	1.2A



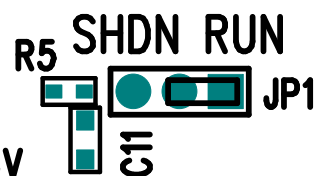
VOUT  
E3  
3.3V

GND  
E4

GND  
E9



VIN  
E1  
4.5V-36V



LINEAR TECHNOLOGY CORPORATION

DC897A REV 3  
02/10/06

TOP SILKSCREEN