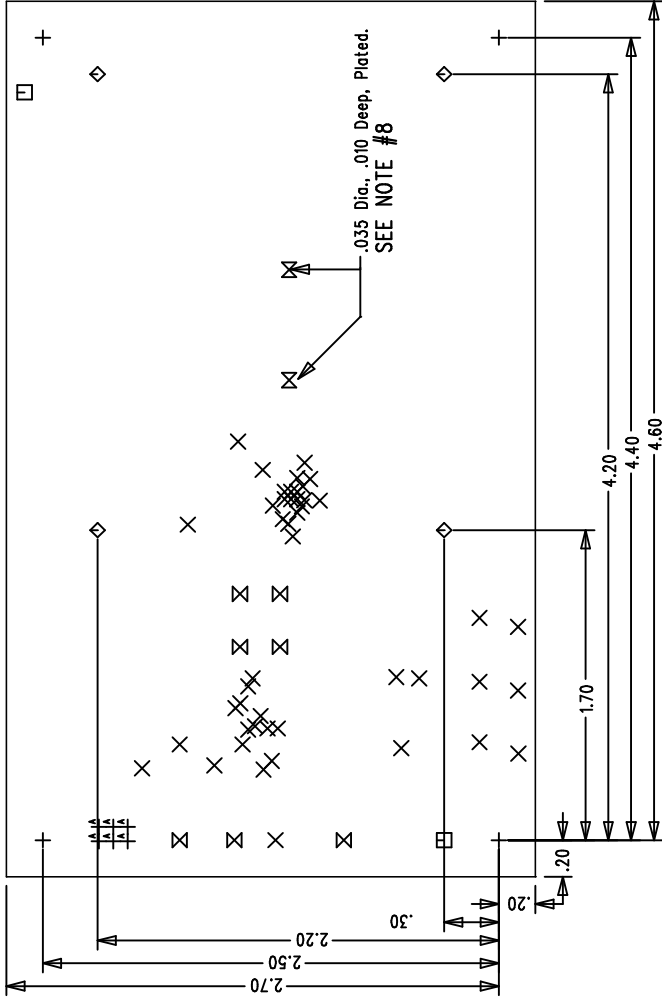


LTC CONFIDENTIAL - For Customer Use Only

REVISION HISTORY

ECO	REV	DESCRIPTION	DATE	APPROVED
	2	PROTO	04/13/05	

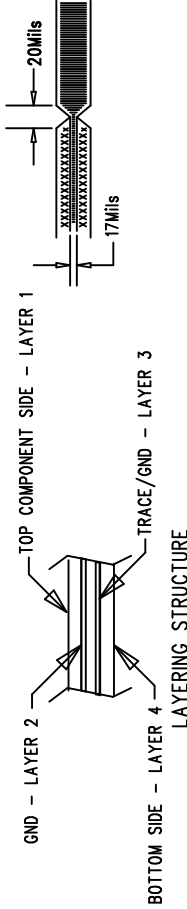
COMPONENT SIDE SHOWN



NOTES: UNLESS OTHERWISE SPECIFIED,

- ARTWORK P/N DC895A REV 2.
- FAB PER IPC-A-600
- MATERIAL: EPOXY FIBERGLASS, NEMA GRADE FR-4 .062 +/- .005 INCH THICKNESS WITH 2 OZ. COPPER FINISH ON TWO OUTER LAYERS AND 1 OZ. COPPER ON TWO INTERNAL LAYERS. FLAMABILITY RATING: 94 V-2 MINIMUM .
- SIZE: CUT TO DIMENSIONS AND TOLERANCES SHOWN. 0.00 ARE PRIMARY DATUMS.
- BOARD: SELECTIVE PLATED BOARD. SOLDER MASK OVER BARE COPPER, COLOR: BLUE LPI. WHITE TIN IMMERSION (OMIKRON) BOTH SIDES. SILKSCREEN COMPONENT SIDE WITH WHITE NON-CONDUCTIVE INK.
- DRILL: ALL HOLES SHALL BE DRILLED +/- .003 INCH WITH RESPECT TO CTR. OF DRILLED PAD. ALL HOLES FINISHED SIZE AFTER PLATING.
- DROP ALL UNUSED PADS ON INNER LAYERS.
- CONTROL DEPTH (Component Side).
- DO NOT ALTER ARTWORK e.g. TO ADD LOGO OR DATE CODE.
- SCORING:

SIZE	QTY	SYM	PLTD	TOL
187	4	+	YES	+/-0.01
10	46	X	YES	+/-0.003
70	2	□	NO	+/-0.005
156	4	◇	YES	+/-0.01
94	7	⊗	YES	+/-0.005
35	2	⊗	YES	+/-0.003
31	6	+	YES	+/-0.003



UNLESS OTHERWISE SPECIFIED DIMENSIONS ARE IN INCHES TOLERANCES ON ANGLE ± 1° 2 PLACE ± .01 3 PLACE ± .005 INTERPRET DIM AND TOL PER ASME Y14.5M - 1994	CONTRACT NO.		LINEAR TECHNOLOGY 1630 McCarthy Blvd. Milpitas, CA 95035 Phone: (408)432-1900 Fax: (408)434-0507	
	APPROVALS	DATE	TITLE	
	DRAWN MEI	04/13/05	FAB, LT3485EDD-0/1/2/3, PHOTOFLASH CHARGER	
	CHECKED		SIZE A	CAGE CODE DC895A
DO NOT SCALE DRAWING	DESIGNED BY	SCALE 1/1	FILENAME: 895A-1.PCB	SHEET 1 OF 1
			DWG NO.	REV 2