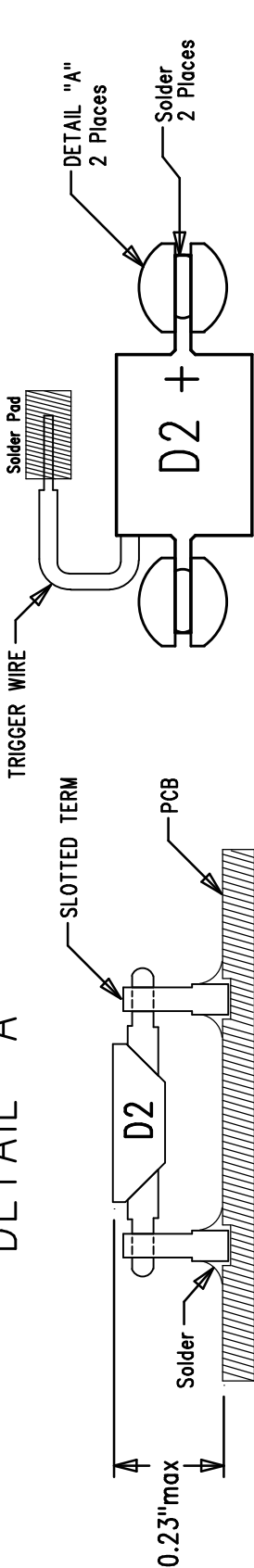


DETAIL "B"

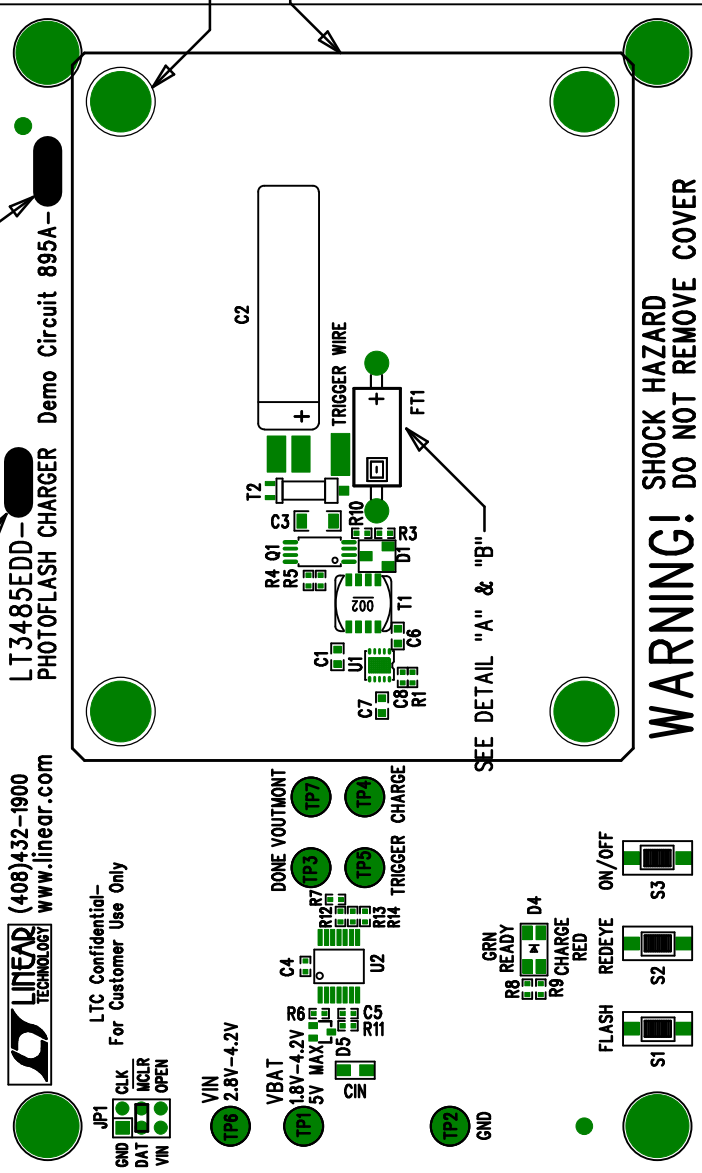
DETAIL "A"



LINEAR TECHNOLOGY CORPORATION  
DC895A REV 2  
07/15/05

TOP SILKSCREEN MARK ASSEMBLY VERSION  
MARK IC VERSION

LINEAR TECHNOLOGY (408)432-1900  
www.linear.com



INSTALL SHUNT AT: JP1-PINS 3&4

VERSION	U1
-A	LT3485-0
-B	LT3485-1
-C	LT3485-2
-D	LT3485-3