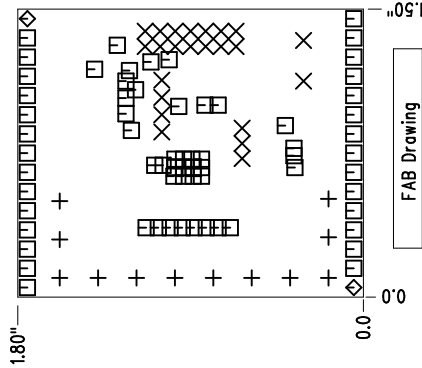


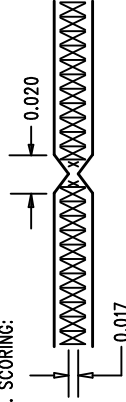
REVISIONS			
REV	DESCRIPTION	APPR	DATE



NOTES : Unless Otherwise Specified


1. FAB PER IPC-A-600.
2. MATERIAL: EPOXY FIBERGLASS, NEMA GRADE FR-4.
2 OZ. COPPER FINISHED ON OUTER LAYERS.
THICKNESS .062 +/- .006 TOTAL OF 2 LAYERS.
FLAMABILITY RATING: 94 V-0 MINIMUM .
3. SIZE: DIMENSIONS AND TOLERANCES SHOWN.
0.000 ARE PRIMARY DATUMS.
4. DRILLING: DRILL HOLES PER SCHEDULE. PLATE THROUGH HOLES WITH COPPER, .001 INCH THICK MIN. ALL HOLE SIZES ARE SPECIFIED AFTER PLATING.
HOLE LOCATION TOLERANCES ARE +/- .003 INCH IN RELATION TO CENTER
5. SOLDER MASK : SMOBC USING LPI BOTH SIDES COLOR GREEN.
6. SILKSCREEN : USING WHITE NON-CONDUCTIVE EPOXY INK.
7. DO NOT ALTER ARTWORK e.g. TO ADD LOGO OR DATE CODE.

8. SCORING:



SIZE	QTY	SYM	PLTD
65	12	+	PLTD
35	23	X	PLTD
10	67	□	PLTD
70	2	◇	NPLTD

FAB DRAWING

UNLESS OTHERWISE SPECIFIED DIMENSIONS ARE IN INCHES TOLERANCES ON ANGLE ±1 2 PLACE ±.01 3 PLACE ±.005 INTERPRET DIM AND TOL PER ASME Y14.5M - 1994	APPROVALS			 LINEAR TECHNOLOGY 1630 McCarthy Blvd. Milpitas, CA 95035 PH: (408)432-1900		TITLE: LTC1867LCGN, 16-Bit, 8-Channel 175Ksps ADC	
				INIT	DATE		
				DRAWN			
				CHECK			
				DESIGN	J. Wu	1/10/05	
				ENGR	M. Thoren	1/10/05	
SCALE = NONE				SIZE	A	DC873A	REV. A
				DES- 250		SHT 1 of 1	