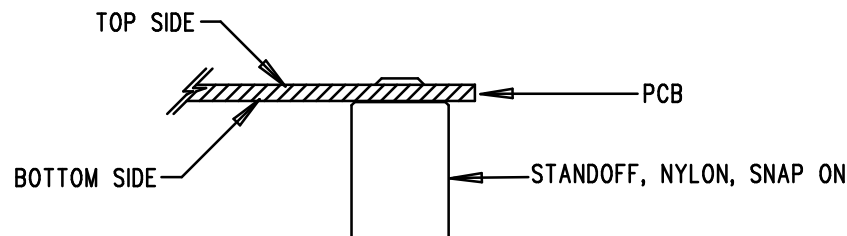


TOP SILKSCREEN
LINEAR TECHNOLOGY
DC857A-2 * LT3481EMSE/EDD
800KHz/2MHz BUCK REGULATOR
DATE: 03-07-06

REVISIONS			
REV	DESCRIPTION	APPR	DATE
A-2	FINAL FABRICATION	KH	03-07-06

NOTES: UNLESS OTHERWISE SPECIFIED

1. WORKMANSHIP SHALL BE IN ACCORDANCE WITH IPC-A-610.
2. INSTALL SHUNT ON JP1-JP2 PINS 1&2.
3. PARTS TO OMIT WILL BE SPECIFIED ON THE BILLS OF MATERIAL. LOCATIONS OF OMITTED PARTS SHALL BE FREE OF SOLDER. MASK THE SOLDER STENCIL WHERE SMT PARTS ARE OMITTED.
4. DEPANELIZE BOARDS AFTER ASSEMBLY AND ROUTE-OUT THE BREAKOUT TABS ON FOUR SIDES OF THE BOARD EDGE.
5. ASSY PROCESSES SHALL INCLUDE: REFLOW SOLDER TOP SIDE SMD.
6. INSTALL 4 STANDOFFS AT 4 CORNERS AS SHOWN BELOW:



APPROVALS

	INIT	DATE
DRAWN		
CHECK		
DESIGN	KIM T.	03-07-06
ENGR	KEVIN H.	03-07-06



TITLE: TOP ASSEMBLY DRAWING
800KHz/2MHz BUCK REGULATOR

SIZE A DEMO DC857A-2
LT3481EMSE/EDD REV. A-2

SCALE = NONE

SHT 1 of 1