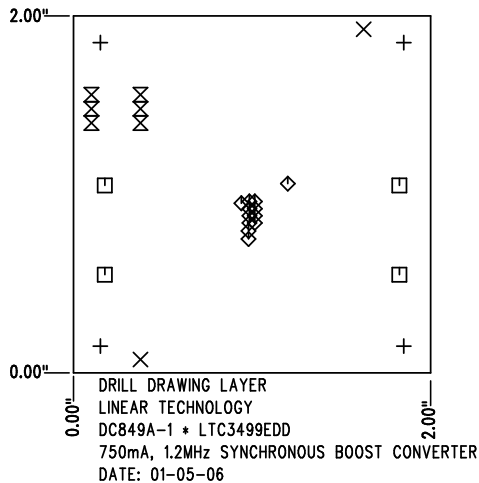


REVISIONS			
REV	DESCRIPTION	APPR	DATE
A-1	FINAL FABRICATION	JR	01-05-06

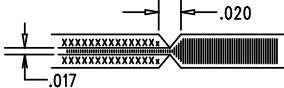



SHOWN FROM COMPONENT SIDE

SIZE	QTY	SYM	PLTD	TOL
0.19	4	+	YES	+/-0.003"
0.07	2	X	NO	+/-0.003"
0.094	4	□	YES	+/-0.003"
0.015	12	◇	YES	+/-0.003"
0.035	6	⊗	YES	+/-0.003"

NOTES: UNLESS OTHERWISE SPECIFIED

- FAB PER IPC-A-600
- MATERIAL: EPOXY FIBERGLASS, NEMA GRADE FR-4  
FINISHED THICKNESS TO BE 0.062" +/- 0.006"  
TOTAL OF 4 LAYERS WITH 2 OZ. COPPER ON THE OUTER LAYERS AND 1 OZ. COPPER ON THE INTERNAL LAYERS.  
FLAMABILITY RATING: 94 V-0 MINIMUM .
- FINISH: SMOBC USING LPI BOTH SIDES, COLOR GREEN.  
WHITE TIN IMMERSION (OMIKRON).  
FOR SILKSCREEN: USE WHITE NON-CONDUCTIVE INK.
- DRILLING: DRILL HOLES PER SCHEDULE. ALL PLATED THROUGH HOLES WITH COPPER, 0.001" MIN. / 0.0015" MAX. COPPER PLATE  
ALL HOLE SIZES ARE SPECIFIED AFTER PLATING. HOLE LOCATION TOLERANCES ARE +/-0.01" IN RELATION TO CENTER
- DO NOT ALTER ARTWORK e.g. TO ADD LOGO OR DATE CODE.
- SCORING FOR PANELIZED PCB:



APPROVALS			<div>  <div> 1630 MCCATHY BLVD MILPITAS, CA 95035 PH: (408)432-1900 LTC CONFIDENTIAL- FOR CUSTOMER USE ONLY </div> </div>	
	INIT	DATE		
DRAWN			TITLE: FABRICATION DRAWING 750mA, 1.2MHz SYNCHRONOUS BOOST CONVERTER	
CHECK				
DESIGN	KIM T.	01-05-06	SIZE A DEMO DC849A-1 * LTC3499EDD REV. A-1	
ENGR	JESUS R.	01-05-06		
			SCALE = NONE SHT 1 of 1	