

● **CONSTANT CURRENT BOOST CONVERTER**  
WITH INPUT CURRENT AND  
OUTPUT VOLTAGE PROTECTION



**LT3477EFE**

**E3** GND

**E9** PVIN  
OPTION

**E1** VIN  
2.7V–16V  
**R7**

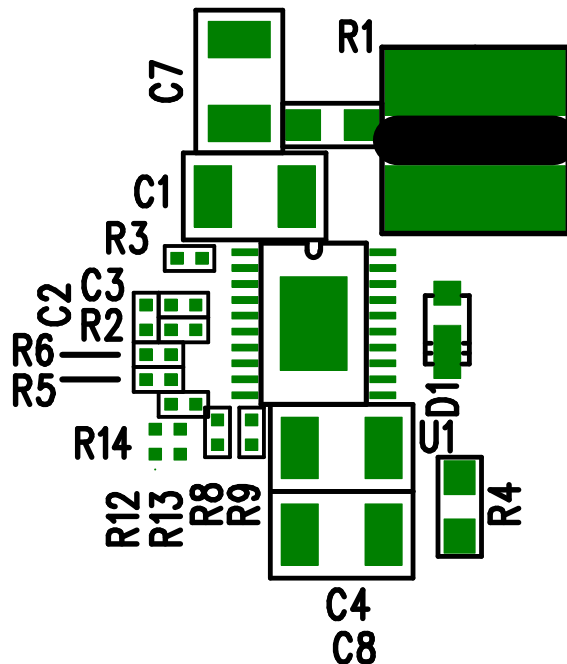
**E2** SHDN

**L1** IADJ2\* **E6**

**R10**  
**C3**

IADJ1\* **E5**  
**R11**  
**C6**

GND **E8**



DC841A  
(408)432-1900  
www.linear.com

GND 330mA VOUT  
36V MAX  
LED- **E7** LED+ **E4**

\*MUST INSTALL R10, R11  
AND REMOVE R8, R9  
FOR IADJ FUNCTION

LTC CONFIDENTIAL—FOR CUSTOMER USE ONLY ●

**LINEAR TECHNOLOGY CORPORATION**

DC841A REV 3  
04/08/05

TOP SILKSCREEN