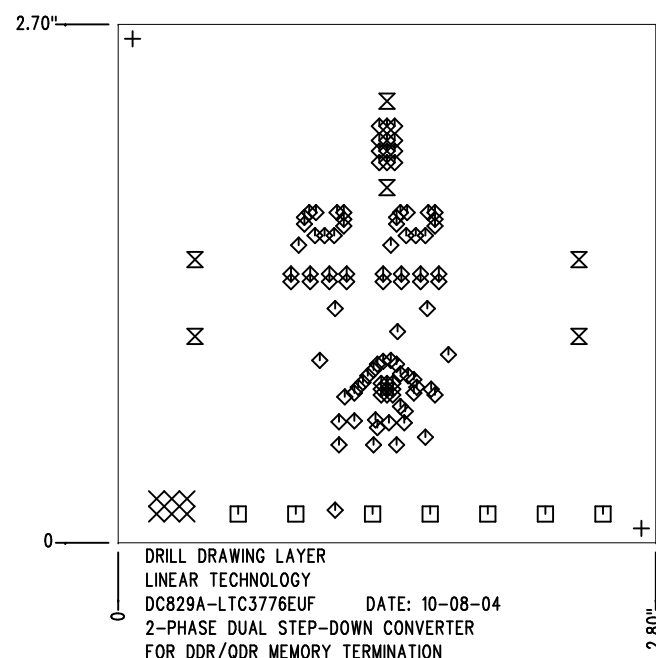
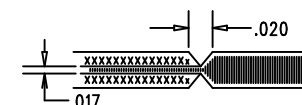


REVISIONS			
REV	DESCRIPTION	APPR	DATE
A	PROTOTYPE RELEASE		


SIZE	QTY	SYM	PLTD	TOL
0.07	2	+	NO	+/-0.003"
0.035	6	×	YES	+/-0.003"
0.064	7	□	YES	+/-0.003"
0.012	96	◇	YES	+/-0.003"
0.094	6	⊗	YES	+/-0.003"

NOTES: UNLESS OTHERWISE SPECIFIED

- FAB PER IPC-A-600
- MATERIAL: EPOXY FIBERGLASS, NEMA GRADE FR-4
FINISHED THICKNESS TO BE 0.062" +/- 0.006"
TOTAL OF 4 LAYERS WITH 2 OZ. COPPER ON THE OUTER LAYERS AND 1 OZ. COPPER ON THE INTERNAL LAYERS.
FLAMABILITY RATING: 94 V-0 MINIMUM .
- FINISH: SMOBC USING LPI BOTH SIDES, COLOR GREEN.
WHITE TIN IMMERSION (OMIKRON).
FOR SILKSCREEN: USE WHITE NON-CONDUCTIVE INK.
- DRILLING: DRILL HOLES PER SCHEDULE. ALL PLATED THROUGH HOLES WITH COPPER, 0.001" MIN. / 0.0015" MAX. COPPER PLATE
ALL HOLE SIZES ARE SPECIFIED AFTER PLATING. HOLE LOCATION TOLERANCES ARE +/-0.01" IN RELATION TO CENTER
- DO NOT ALTER ARTWORK e.g. TO ADD LOGO OR DATE CODE.
- SCORING FOR PANELIZED PCB:



SHOWN FROM COMPONENT SIDE

APPROVALS			 LINEAR TECHNOLOGY	1630 MCCATHY BLVD MILPITAS, CA 95035 PH: (408)432-1900 LTC CONFIDENTIAL- FOR CUSTOMER USE ONLY	
	INIT	DATE			
DRAWN					
CHECK					
DESIGN	KIM T.	10-08-04			
ENGR	CHARLIE Z.	10-08-04			
			TITLE: FABRICATION DRAWING 2-PHASE DUAL STEP-DOWN CONVERTER FOR DDR/QDR MEMORY TERMINATION		
			SIZE	DEMO	REV.
			A	DC829A - LTC3776EUF	A
SCALE = NONE			DES- 0000		SHT 1 OF 1