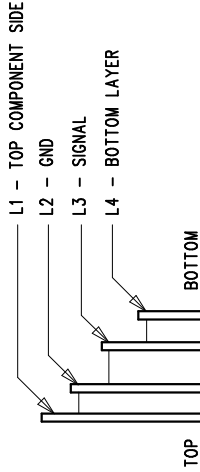
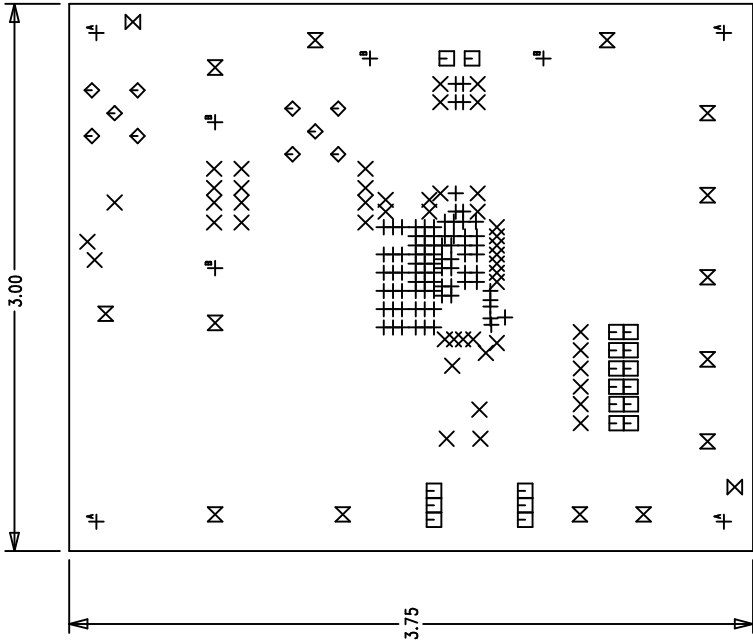


REVISION HISTORY

ECO	REV	DESCRIPTION	DATE	APPROVED
	2	PROTO	05/27/05	



TOP

LAYER CONSTRUCTION

NOTES: UNLESS OTHERWISE SPECIFIED,

- ARTWORK P/N DC823B REV 1.
- FAB PER IPC-A-600
- MATERIAL: EPOXY FIBERGLASS, NEMA GRADE FR-4 .062 +/- .005 INCH THICKNESS WITH 1 OZ. COPPER FINISH ON TWO OUTER LAYERS AND 1 OZ. COPPER ON TWO INTERNAL LAYERS. FLAMABILITY RATING: 94 V-2 MINIMUM .
- SIZE: CUT TO DIMENSIONS AND TOLERANCES SHOWN. 0.00 ARE PRIMARY DATUMS.
- BOARD: SELECTIVE PLATED BOARD. SOLDER MASK OVER BARE COPPER, COLOR, GREEN LPI. WHITE TIN IMMERSION (OMIKRON) BOTH SIDES. SILKSCREEN COMPONENT SIDE WITH WHITE NON-CONDUCTIVE INK. PLATE THRU ALL HOLES WITH COPPER MIN. PLATING THICKNESS: 1 OZ. EXCEPT WHERE PLATING NOT REQUIRED
- DRILL: ALL HOLES SHALL BE DRILLED +/- .003 INCH WITH RESPECT TO CTR. OF DRILLED PAD. ALL HOLES FINISHED SIZE AFTER PLATING.
- DROP ALL UNUSED PADS ON INNER LAYERS.
- DO NOT ALTER ARTWORK e.g. TO ADD LOGO OR DATE CODE.

SIZE	QTY	SYM	PLTD	TOL
10	87	+	YES	+/-0.003
20	49	X	YES	+/-0.003
35	20	□	YES	+/-0.003
55	10	◇	YES	+/-0.005
70	2	⊗	NO	+/-0.005
95	14	⊗	YES	+/-0.005
187	4	⊕	NO	+/-0.01
205	4	⊕	YES	+/-0.01

COMPONENT SIDE SHOWN

UNLESS OTHERWISE SPECIFIED DIMENSIONS ARE IN INCHES TOLERANCES ON ANGLE ± 1° 2 PLACE ± .01 3 PLACE ± .005 INTERPRET DIM AND TOL PER ASME Y14.5M - 1994	CONTRACT NO.		LINEAR TECHNOLOGY 1630 McCarthy Blvd. Milpitas, CA 95035 Phone: (408)432-1900 Fax: (408)434-0507	
	APPROVALS	DATE	TITLE	
	DRAWN MEI	05/27/05	FAB, LTM4600EV, HIGH EFFICIENCY DC/DC MODULE	
	CHECKED		SIZE	DWG NO.
APPROVED		A	DC823B	
DESIGNED BY		SCALE 1/1	FILENAME: 823B-1.PCB	SHEET 1 OF 1