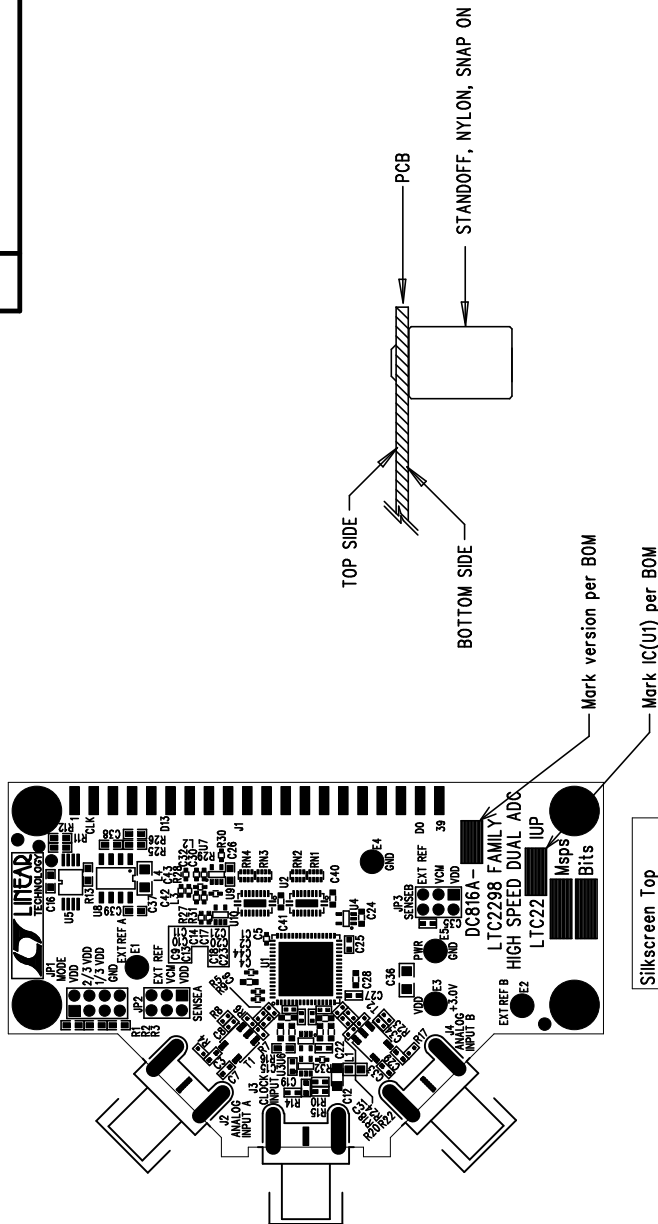



REVISIONS		
REV	DESCRIPTION	DATE



NOTES : Unless Otherwise Specified

1. BREAK BOARDS FROM THE PANEL WHEN ASSEMBLY IS COMPLETE.
2. OPTIONAL COMPONENTS ARE UNSTUFFED AND SHOULD BE FREE OF SOLDER AFTER ASSEMBLY.
3. JUMPER INSTALLATIONS:

JP1: VDD JP2: VDD
JP3: VDD

APPROVALS			 LINEAR TECHNOLOGY		1630 McCarthy Blvd. Milpitas, CA 95035 PH: (408)432-1900	
	INIT	DATE	TITLE: LTC2298 FAMILY HIGH SPEED DUAL ADC			
DRAWN						
CHECK						
DESIGN	JUNE WU	8/26/04				
ENGR	RICH REAY	8/26/04				
			SIZE	A	DEMO	DC816A
					REV.	A
SCALE = NONE			DES-250080		SHT 1 of 1	