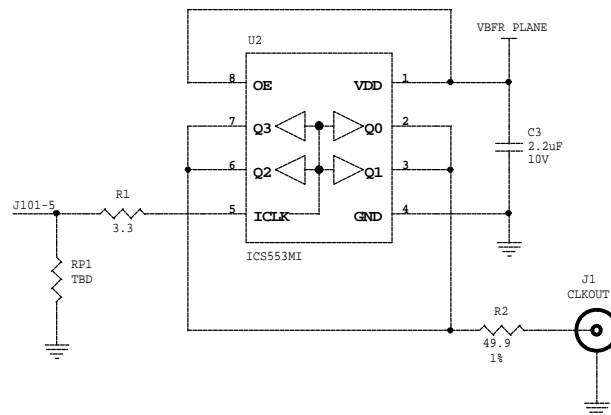
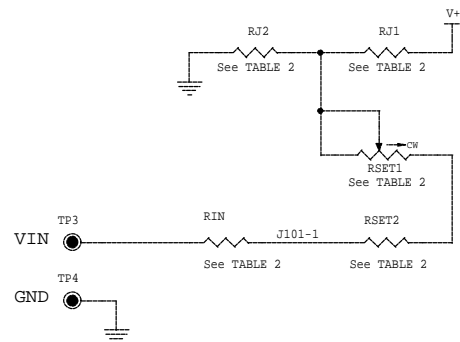


TABLE 1. Clock Buffer Board & DIP-8 Clock Board

Clock Buffer Board	DIP-8 Clock Board	LTC Part #
DC814A-A	DC814B-A	LTC6905CS5
DC814A-B	DC814B-B	LTC1799CS5
DC814A-C	DC814B-C	LTC6900CS5
DC814A-D	DC814B-D	LTC6905CS5-133
DC814A-E	DC814B-E	LTC6905CS5-100
DC814A-F	DC814B-F	LTC6905CS5-96
DC814A-G	DC814B-G	LTC6905CS5-80
DC814A-H	DC814C-H	LTC6906CS6
DC814A-I	DC814C-I	LTC6907CS6

TABLE 2. Clock Buffer Board Configuration

Clock Buffer Board	DIP-8 Clock Board	LTC Part #	RSET1	RSET2	RJ1	RJ2	RIN
DC814A-A	DC814B-A	LTC6905CS5	20K POT	9.09K	0 OHM	OPEN	40.2K
DC814A-B	DC814B-B	LTC1799CS5	1M POT	3.01K	0 OHM	OPEN	14.7K
DC814A-C	DC814B-C	LTC6900CS5	2M POT	9.09K	0 OHM	OPEN	40.2K
DC814A-D	DC814B-D	LTC6905CS5-133	OPEN	OPEN	OPEN	OPEN	0 OHM
DC814A-E	DC814B-E	LTC6905CS5-100	OPEN	OPEN	OPEN	OPEN	0 OHM
DC814A-F	DC814B-F	LTC6905CS5-96	OPEN	OPEN	OPEN	OPEN	0 OHM
DC814A-G	DC814B-G	LTC6905CS5-80	OPEN	OPEN	OPEN	OPEN	0 OHM
DC814A-H	DC814C-H	LTC6906CS6	1M POT	90.9K	OPEN	0 OHM	OPEN
DC814A-I	DC814C-I	LTC6907CS6	500K POT	47.5K	OPEN	0 OHM	OPEN



This circuit is proprietary to Linear Technology and supplied for use with Linear Technology parts.
Customer Notice: Linear Technology has made a best effort to design a circuit that meets customer-supplied specifications; however, it remains the customers responsibility to verify proper and reliable operation in the actual application. Component substitution and printed circuit board layout may significantly affect circuit performance or reliability. Contact Linear Applications Engineering for assistance.

1630 McCarthy Blvd., Milpitas, CA
Linear Technology Corp. 95035-7487
 Phone: (408)432-1900 Fax: (408)434-0507

Title
 Resistor Set Oscillator in SOT-23

Size Document Number Demo Circuit 814A-x Rev 2

Date: Thursday, August 04, 2005 Sheet 1 of 1