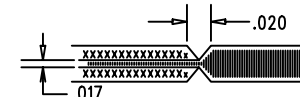


REVISIONS			
REV	DESCRIPTION	APPR	DATE
A	PROTOTYPE RELEASE		

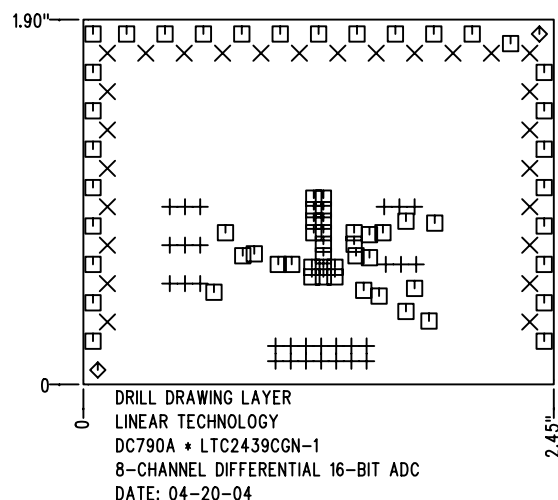
SIZE	QTY	SYM	PLTD
0.035	29	+	PLTD
0.064	26	×	PLTD
0.015	63	□	PLTD
0.07	2	◇	NPLTD

# NOTES: UNLESS OTHERWISE SPECIFIED


- FAB PER IPC-A-600
- MATERIAL: EPOXY FIBERGLASS, NEMA GRADE FR-4  
FINISHED THICKNESS TO BE 0.062" +/- .005"  
FLAMABILITY RATING: 94 V-0 MINIMUM .  
TOTAL OF 2 LAYERS.
- SIZE: CUT TO DIMENSIONS AND TOLERANCES SHOWN.  
0.00" ARE PRIMARY DATUMS.
- DRILLING: DRILL HOLES PER SCHEDULE. PLATE THROUGH  
HOLES WITH COPPER, 0.001" THICK MIN.  
ALL HOLE SIZES ARE SPECIFIED AFTER PLATING.  
HOLE LOCATION TOLERANCES ARE +/-0.003"  
IN RELATION TO CENTER
- FINISH: WHITE TIN IMMERSION (OMIKRON).  
SMOBC USING LPI BOTH SIDES, COLOR GREEN.  
SILKSCREEN: USING WHITE NON-CONDUCTIVE EPOXY INK.
- DO NOT ALTER ARTWORK e.g. TO ADD LOGO OR DATE CODE.
- SCORING FOR PANELIZED PCB:



- PLEASE LOOK AT THE README FILE FOR THE OTHER REQUIREMENTS.



SHOWN FROM COMPONENT SIDE

APPROVALS			 <div> 1630 MCCATHY BLVD  MILPITAS, CA 95035  PH: (408)432-1900  LTC CONFIDENTIAL-  FOR CUSTOMER USE ONLY </div>	
	INIT	DATE		
DRAWN			<b>TITLE: FABRICATION DRAWING</b> <b>8-CHANNEL DIFFERENTIAL 16-BIT ADC</b>	
CHECK				
DESIGN	KIM T.	04-20-04		
ENGR	MARK T.	04-20-04		
			SIZE	REV.
			A	A
SCALE = NONE			DES- 0000	SHT 1 of 1