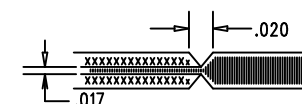


REVISIONS			
REV	DESCRIPTION	APPR	DATE
A	PROTOTYPE RELEASE		

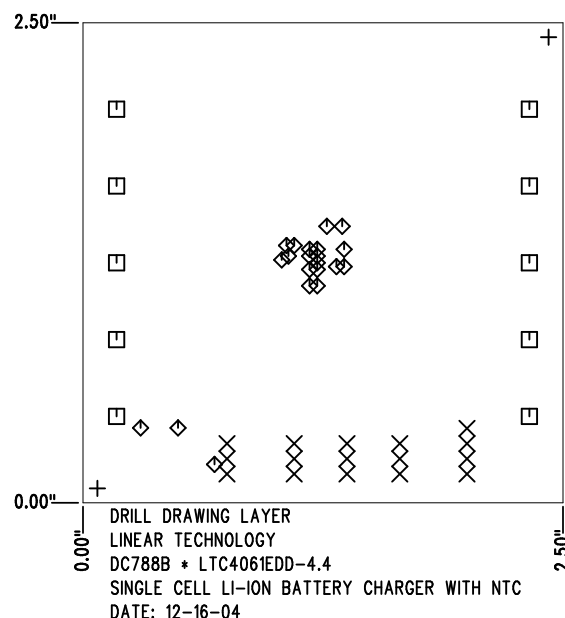
SIZE	QTY	SYM	PLTD	TOL
0.07	2	+	NO	+/-0.003"
0.035	16	X	YES	+/-0.003"
0.094	10	□	YES	+/-0.003"
0.015	21	◇	YES	+/-0.003"

# **NOTES: UNLESS OTHERWISE SPECIFIED**


1. FAB PER IPC-A-600
2. MATERIAL: EPOXY FIBERGLASS, NEMA GRADE FR-4  
FINISHED THICKNESS TO BE 0.062" +/- .005"  
WITH 2 OZ. COPPER ON THE OUTER LAYERS AND  
1 OZ. COPPER ON THE INTERNAL LAYERS.  
FLAMABILITY RATING: 94 V-0 MINIMUM .
3. SIZE: CUT TO DIMENSIONS AND TOLERANCES SHOWN.  
0.00" ARE PRIMARY DATUMS.
4. DRILLING: DRILL HOLES PER SCHEDULE. PLATE THROUGH  
HOLES WITH COPPER, 0.001" THICK MIN.  
ALL HOLE SIZES ARE SPECIFIED AFTER PLATING.  
HOLE LOCATION TOLERANCES ARE +/-0.003"  
IN RELATION TO CENTER
5. FINISH: SMOBC USING LPI BOTH SIDES, COLOR GREEN.  
WHITE TIN IMMERSION (OMIKRON).  
FOR SILKSCREEN: USE WHITE NON-CONDUCTIVE INK.
6. DO NOT ALTER ARTWORK e.g. TO ADD LOGO OR DATE CODE.
7. SCORING FOR PANELIZED PCB:



8. PLEASE LOOK AT THE README FILE FOR THE OTHER REQUIREMENTS.



SHOWN FROM COMPONENT SIDE

APPROVALS			 <div> 1630 MCCATHY BLVD  MILPITAS, CA 95035  PH: (408)432-1900  LTC CONFIDENTIAL-  FOR CUSTOMER USE ONLY </div>	
DRAWN	INIT	DATE		
CHECK			<b>TITLE: FABRICATION DRAWING</b> <b>SINGLE CELL LI-ION BATTERY CHARGER WITH NTC</b>	
DESIGN	KIM T.	12-16-04		
ENGR	FRAN H.	12-16-04	<b>SIZE</b> A <b>DEMO</b> <b>DC788B*LTC4061EDD-4.4</b> <b>REV.</b> A	
SCALE = NONE			DES- 0000	SHT 1 of 1