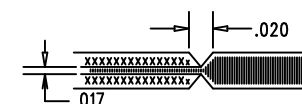


REVISIONS			
REV	DESCRIPTION	APPR	DATE
A	PROTOTYPE RELEASE		

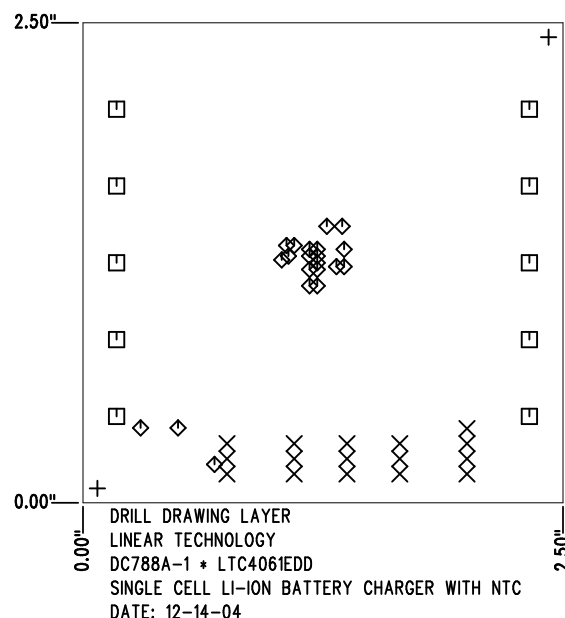
SIZE	QTY	SYM	PLTD	TOL
0.07	2	+	NO	+/-0.003"
0.035	16	X	YES	+/-0.003"
0.094	10	□	YES	+/-0.003"
0.015	21	◇	YES	+/-0.003"

NOTES: UNLESS OTHERWISE SPECIFIED


1. FAB PER IPC-A-600
2. MATERIAL: EPOXY FIBERGLASS, NEMA GRADE FR-4
FINISHED THICKNESS TO BE 0.062" +/- .005"
WITH 2 OZ. COPPER ON THE OUTER LAYERS AND
1 OZ. COPPER ON THE INTERNAL LAYERS.
FLAMABILITY RATING: 94 V-0 MINIMUM .
3. SIZE: CUT TO DIMENSIONS AND TOLERANCES SHOWN.
0.00" ARE PRIMARY DATUMS.
4. DRILLING: DRILL HOLES PER SCHEDULE. PLATE THROUGH
HOLES WITH COPPER, 0.001" THICK MIN.
ALL HOLE SIZES ARE SPECIFIED AFTER PLATING.
HOLE LOCATION TOLERANCES ARE +/-0.003"
IN RELATION TO CENTER
5. FINISH: SMOBC USING LPI BOTH SIDES, COLOR GREEN.
WHITE TIN IMMERSION (OMIKRON).
FOR SILKSCREEN: USE WHITE NON-CONDUCTIVE INK.
6. DO NOT ALTER ARTWORK e.g. TO ADD LOGO OR DATE CODE.
7. SCORING FOR PANELIZED PCB:



8. PLEASE LOOK AT THE README FILE FOR THE OTHER REQUIREMENTS.



SHOWN FROM COMPONENT SIDE

APPROVALS			 LINEAR TECHNOLOGY	1630 MCCATHY BLVD MILPITAS, CA 95035 PH: (408)432-1900 LTC CONFIDENTIAL- FOR CUSTOMER USE ONLY	
	INIT	DATE			
DRAWN					
CHECK					
DESIGN	KIM T.	12-14-04			
ENGR	FRAN H.	12-14-04			
SCALE = NONE			TITLE: FABRICATION DRAWING SINGLE CELL LI-ION BATTERY CHARGER WITH NTC		
			SIZE	DEMO	REV.
			A	DC788A-1*LTC4061EDD	A
			DES- 0000		SHT 1 of 1