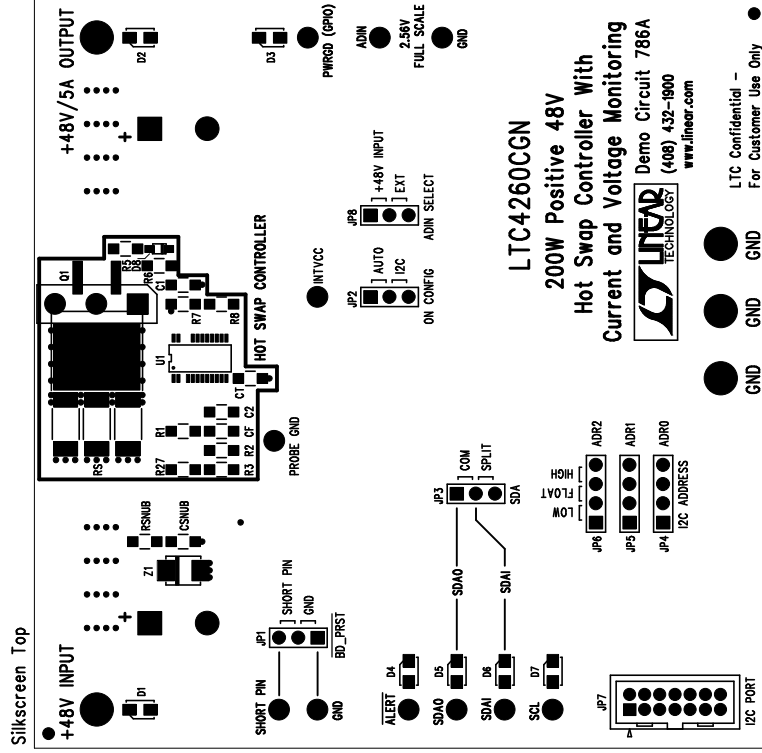



REVISIONS		
REV	DESCRIPTION	DATE



#### NOTES :

1. Unused SMD components should be free of Solder.
2. Fill up all vias with solder.

## Assembly Top Drawing

APPROVALS					1630 McCarthy Blvd. Milpitas, CA 95035 PH: (408)432-1900	
	INIT	DATE	TITLE: 200W Positive 48V Hot Swap Controller With Current and Voltage Monitoring			
DRAWN						
CHECK						
DESIGN						
ENGR						
			SIZE	A	DEMO BRD	REV.
					DC786A	LTC4260CGN
SCALE = NONE			DES-		SHT 1 of 1	

install shunts as follow :

JP1 = SHORT PIN  
JP2 = AUTO  
JP3 = COM  
JP4 = LOW  
JP5 = LOW  
JP6 = LOW  
JP8 = +48V INPUT